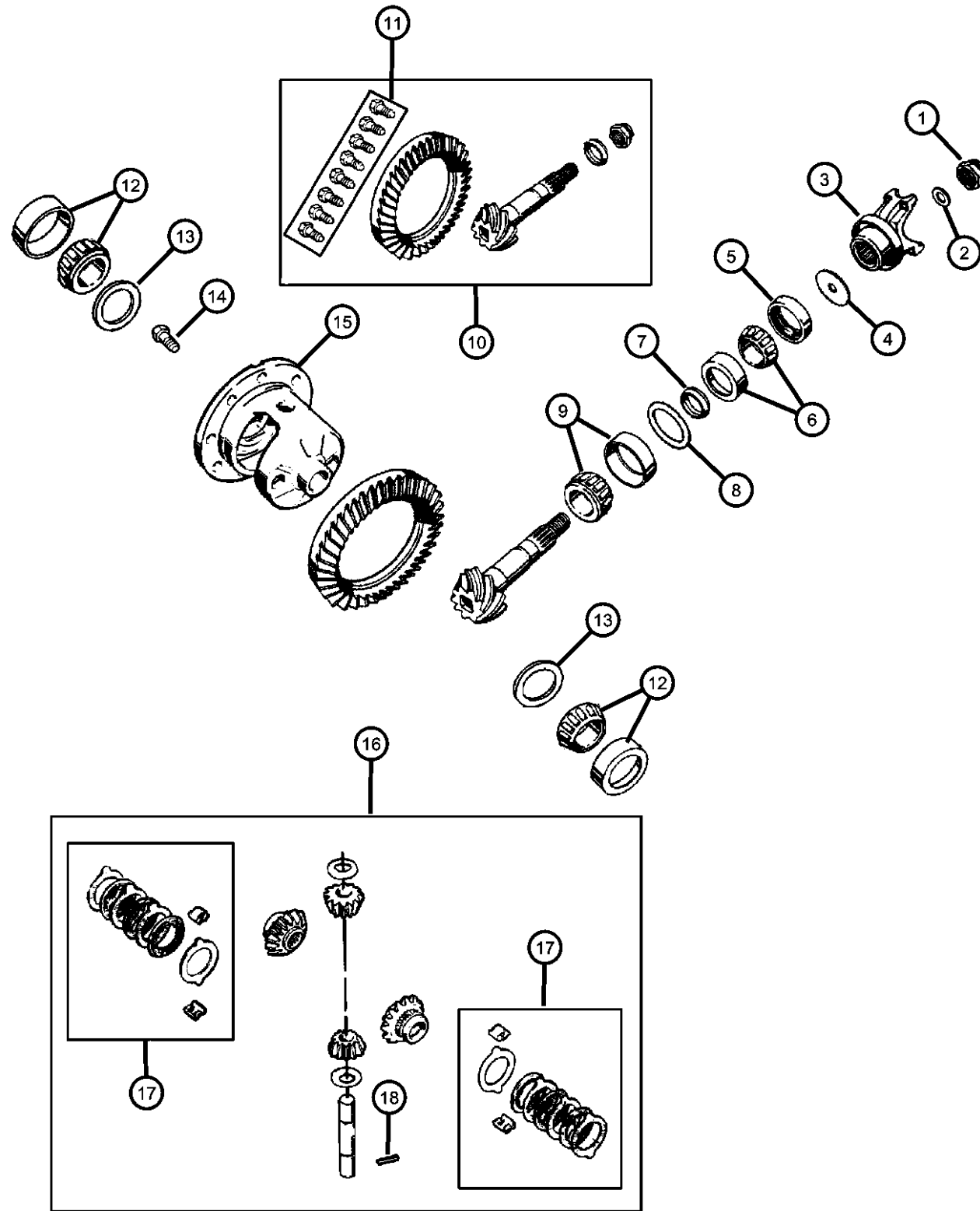


**Differential,Rear,Dana Model 44,with Trac-Lok [DSA]
Figure 3-260**



ITEM	PART NUMBER	QTY	LINE	SERIES	BODY	ENGINE	TRANS	TRIM	DESCRIPTION
Note: DME=3.73 Ratio—DSA=Anti-Spin Differential									
1	01795173	1							NUT, Pinion Yoke
2	01795175	1							WASHER, Pinion Yoke
3									YOKE, Axle
	04856345	1							[ELO]
	05003336AA	1							[EM0]
4	04746867	1							SLINGER, Drive Pinion
5	04384188	1							SEAL, Drive Pinion
6	04864210	1							BEARING, Drive Pinion, Bearing and Cup, Front
7	04864214	1							SPACER, Crush
8									SHIM KIT, Pinion Shaft
	04856368	1							.035 to .039 [ELO]
	04856369	1							.040 to .044 [ELO]
	04856370	1							.045 to .049 [ELO]
	04856371	1							.050 to .054 [ELO]
9	04746979	1							BEARING, Drive Pinion, Bearing and Cup, Rear
10	04856346	1							GEAR KIT, Ring And Pinion
11	04720891	1							BOLT KIT
12	04864213	1							BEARING, Differential Case, Consists of 2 Bearings and 2 Cups
13	04856367	1							SHIM KIT, Differential
14	05252503	10							SCREW, Drive Gear, Ring Gear, Mounting
15	04856355	1							CASE, Differential
16	04856372	1							GEAR KIT, Center Differential, [DME]
17	04626720	1							DISC AND PLATE KIT, Differential
18	05015223AA	1							PIN, Differential Shaft

GRAND CHEROKEE (ZJ)

SERIES LINE
 L = LOWLINE T = JEEP - 2WD
 J = JEEP - 4WD

BODY
 74 = SPORT UTILITY 4-DR

ENGINE
 ELF = 5.2L V8 MPI Engine
 EML = 5.9L V8 MPI Engine
 ERH = 4.0L Power Tech I-6 Engine

TRANSMISSION
 DGK = 4-Spd. Automatic 42RE Transmission
 DGT = 4-Spd. Automatic 46RE Transmission
 DGW = TRANSMISSION - 4-SPD. AUTOMATIC, 44RE
 DGO = ALL AUTOMATIC TRANSMISSIONS

AR = use ase required - = Non illustrated part

Jeep Grand Cherokee Laredo 1998 - Assembled: Argentina - Cordoba - VIN: 8B4GZB8S2W2804887

Differential, Rear, Dana Model 44, with Track-Lok (D S A) - Figure 3-260

430,01

Figure	Item	Part Number	QTY	Description	Price US\$	sub-tot
3-260	1	01795173	1	NUT, Pinon Yoke	1,99	1,99
3-260	2	01795175	1	WASHER, Pinion Yoke	1,99	1,99
3-260	5	04384188 or 4746772	1	Seal, Drive Pinion	7,99	7,99
3-260	6	04864210	1	Bearing, Drive Pinion, Bearing and Cup, Front	32,99	32,99
3-260	7	04864214	1	SPACER, Crush	7,99	7,99
		8125924	1	Differential Side and Pinion Bearing Shim Kit 1948-1969	31,99	31,99
3-260	8	04856368	0	SHIM KIT, Pinion Shaft .035 to .039 [ELO]		0
3-260	8	04856369	0	SHIM KIT, Pinion Shaft .040 to .044 [ELO]		0
3-260	8	04856370	0	SHIM KIT, Pinion Shaft .045 to .049 [ELO]		0
3-260	8	04856371	0	SHIM KIT, Pinion Shaft .050 to .054 [ELO]		0
3-260	9	04746979	1	BEARING, Drive Pinion, Bearing and Cup, Rear	19,99	19,99
3-260	12	04864213	1	Bearing, Differential Case, Consist of 2 Bearing and 2 Cups	61,99	61,99
3-260	13	04856367	1	SHIM KIT, Differential		0
3-260	16	04856372	0	GEAR KIT, Center Differential [DME]	212,99	0
3-260	17	04626720	1	DISC AND PLATE KIT, Differential	119,99	119,99
3-260	18	05015223AA	1	PIN, Differential Shaft		0
3-410	3	04762841	10	STUD, Hub	1,99	19,9
3-260		46636 and 44765	0	Ring and Pinion Set 1994-1998 with 3.73 Ratio 41X11 Teeth Part Number 4856346	349,99	0
4.0L-410	5	33002930	2	DAMPER, Crankshaft or Harmonic Balancer DORMAN Part#594018/ATP Part#102005	35,79	71,58
4.0L-410	10	J3173076	2	SLINGER, Oil or Harmonic Balancer Sleeve 1.778"x1.784"x.675" BCA Prt#88179	6,25	12,5
8-1905	5	83507178	2	CABLE PACKAGE, Ignition, Ignition, (Includes Coil Wire)	19,56	39,12