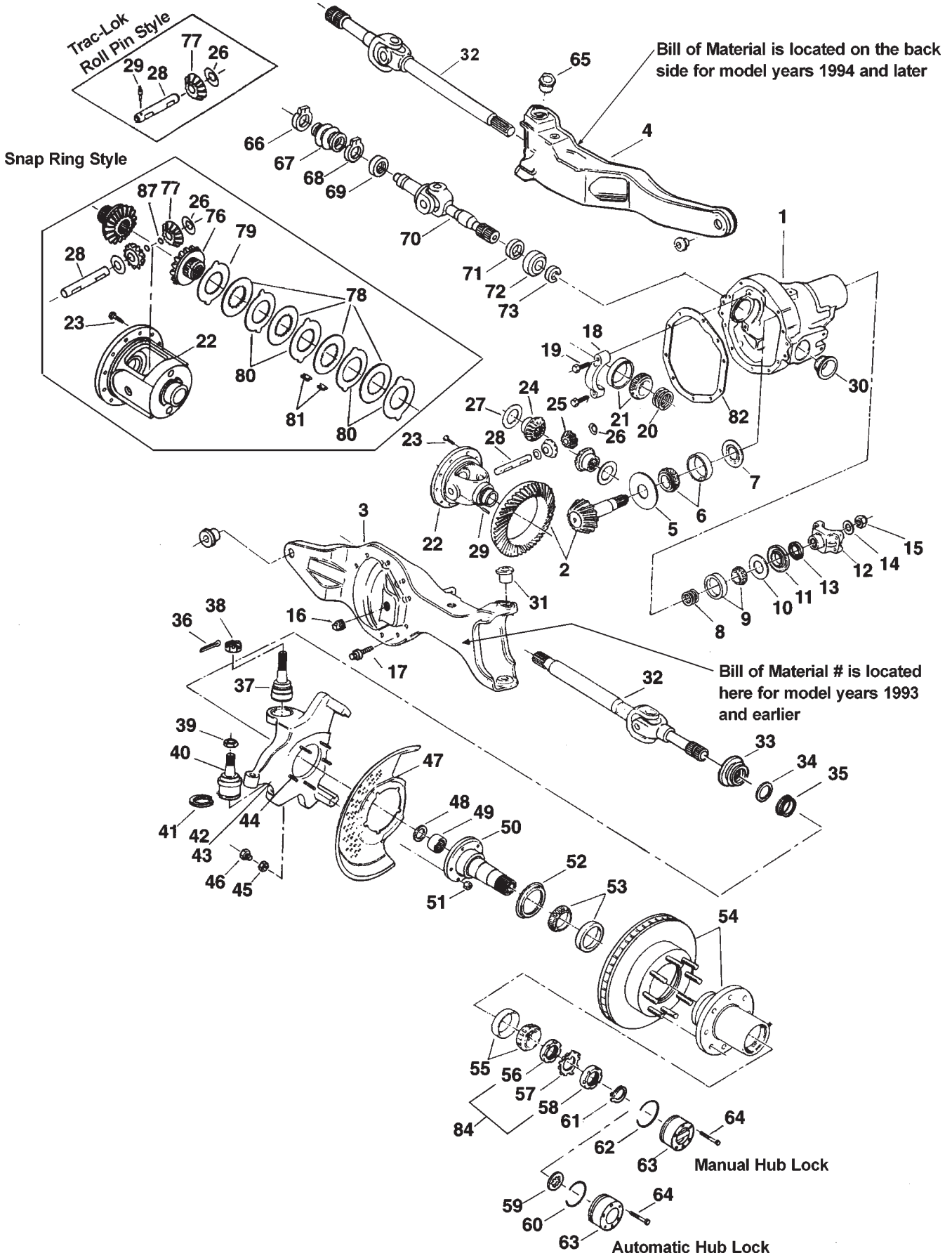


# 44 /216 IFS FRONT EXPLODED VIEW



# MODEL 44 /216 IFS FRONT AXLES FOR FORD PARTS LISTING

ITEM NO.	PART NUMBER	DESCRIPTION	ITEM NO.	PART NUMBER	DESCRIPTION
1	— <sup>3</sup>	Housing – Axle Service	35	— <sup>2</sup>	Spacer – Wheel Bearing Spindle
2	— <sup>1</sup>	Ring Gear & Pinion Kit		<b>700083-1X</b>	KIT – Socket Assy (36,37,38,39,40,41, also includes 43579 camber bushing)
3	— <sup>3</sup>	LH Support Arm Assembly			
4	— <sup>3</sup>	RH Support Arm Assembly			
5	— <sup>2</sup>	Slinger Shim – Pinion Bearing Inner (See Kits – 707238X & 707236X)	36	<b>500024-8</b>	Pin – Cotter
	<b>707238X</b>	KIT – Pinion Bearing Shim (inc 5, 8, 14, 15, 73, 82)	37	<b>47184</b>	Socket – Upper
	<b>707236X</b>	KIT – Diff & Pinion Shim (inc 5, 8, 14, 15, 20, 73, 82)	38	<b>44101</b>	Nut – Upper
6	— <sup>2</sup>	Inner Pinion Bearing Kit	39	<b>35566</b>	Nut – Lower
7	— <sup>2</sup>	Baffle – Pinion Bearing	40	<b>47182</b>	Socket – Lower
8	— <sup>4</sup>	Outer Pinion Adj Shims (See Kits – 707238X & 707236X)	41	<b>35928</b>	Snap Ring
9	<b>706030X</b>	Outer Pinion Bearing Kit	42	— <sup>3</sup>	Right Knuckle
10	<b>13575</b>	Slinger – Outer Pinion	43	— <sup>3</sup>	Left Knuckle
11	<b>40793</b>	Seal – Pinion Oil	44	— <sup>2</sup>	Bolt – Hex
12	<b>2-4-6111X</b>	End Yoke or Assembly (inc 13)	45	— <sup>2</sup>	Nut
13	<b>41498</b>	Slinger – End Yoke	46	— <sup>2</sup>	Screw – Stop
14	<b>30186</b>	Washer – Pinion Nut	47	— <sup>3</sup>	Dust Shield
15	<b>30185</b>	Nut – Pinion	48	— <sup>2</sup>	Seal – Needle Bearing
16	<b>36472</b>	Plug – Oil Fill	49	<b>550759</b>	Needle Bearing – Spindle
17	<b>620631</b>	Bolt – Carrier	50	— <sup>2</sup>	Spindle
18	— <sup>4</sup>	Cap – Diff Bearing		— <sup>2</sup>	KIT – Spindle Seal & Bearing (34, 35, 48, 49)
19	<b>48632-1</b>	Screw – Diff Bearing Cap	51	— <sup>2</sup>	KIT – Spindle (33,34,35,48,49,50)
20	<b>706928X</b>	KIT – Diff Brg Adj Shim	52	— <sup>2</sup>	Assembly – Spindle (48,49,50)
21	<b>706032X</b>	Diff Bearing Kit	53	— <sup>2</sup>	Nut – Lock (qty 10)
22	— <sup>4</sup>	Case – Differential	54	— <sup>3</sup>	Seal – Oil
23	<b>41221</b>	Bolt – Drive Gear	55	<b>706111X</b>	Inner Wheel Bearing
24	— <sup>2</sup>	Gear – Differential (STD)	56	— <sup>2</sup>	Hub & Rotor
25	<b>17717</b>	Pinion – Differential (STD)	57	— <sup>2</sup>	Outer Wheel Bearing
26	<b>13338-3</b>	Thrustwasher-Diff Pinion (STD & T/L)	58	— <sup>2</sup>	Nut & Pin Assembly
27	— <sup>2</sup>	Thrustwasher – Diff Gear (STD)	59	— <sup>2</sup>	Lockwasher
28	<b>39194</b>	Shaft – Differential (STD & T/L)	60	— <sup>2</sup>	Spindle Nut
29	<b>13449</b>	Lock-Differential Shaft (STD & T/L)	61	— <sup>2</sup>	Axle Shaft Retainer
30	<b>40710</b>	Seal – Oil	62	— <sup>2</sup>	Snap Ring
31	— <sup>5</sup>	Camber Bushing (LH)	63	— <sup>3</sup>	Snap Ring
32	— <sup>1</sup>	Shaft & Joint Assembly	64	— <sup>2</sup>	Snap Ring
33	— <sup>2</sup>	Slinger	65	— <sup>5</sup>	Hub Lock
34	— <sup>2</sup>	Seal – Oil	66	<b>40540-4</b>	Screw – Socket Head (Hub Lok)
			67	<b>40929</b>	Camber Bushing (RH)
			68	<b>40540-3</b>	Clamp – Keystone
					Boot – Rubber
					Clamp – Keystone

1 See "Bill of Material Table" on page 21

2 See "Variable Parts Table" on page 29

3 Contact Vehicle Manufacturer.

4 Not Sold Separately.

5 See Camber/Casting Bushing Table on page 203.

# MODEL 44 /216 IFS FRONT AXLES FOR FORD PARTS LISTING

N.I. = Not Illustrated

ITEM NO.	PART NUMBER	DESCRIPTION
69	<b>40930</b>	Oil Seal
70	— <sup>1</sup>	Shaft & Slip Yoke Assembly
	— <sup>2</sup>	KIT – Unit Bearing & Seal (inc 71, 72, 73)
71	— <sup>2</sup>	Seal – Oil
72	— <sup>2</sup>	Bearing
73	<b>42570</b>	Snap Ring
		The following two parts were used in vehicles 1982 or earlier.
N.I.	—	Retainer – Oil Seal
N.I.	—	Retainer – Brg Ring
76	— <sup>2</sup>	Gear – Differential (T/L)
77	<b>32808</b>	Pinion – Differential (T/L)
	<b>706352X</b>	KIT – Diff Plate & Disc (inc 78, 79, 80, 81)
78	— <sup>4</sup>	Disc – Differential
79	— <sup>4</sup>	Plate – Differential
80	— <sup>4</sup>	Plate – Differential Pressure
81	<b>40835</b>	Clip – Diff Clutch Retainer
82	<b>34685</b>	Gasket
83	<b>38615</b>	RTV Silicone Sealant
84	— <sup>2</sup>	Wheel Brg Retainer Assy
N.I.	— <sup>2</sup>	Washer Pkg.
N.I.	— <sup>3</sup>	Sensor Housing Kit (ABS Only)
87	— <sup>6</sup>	Snap Ring Style Trac-Loc

<sup>1</sup> See “Bill of Material Table” on page 21

<sup>2</sup> See “Variable Parts Table” on page 29

<sup>3</sup> Contact Vehicle Manufacturer.

<sup>4</sup> Not Sold Separately.

<sup>6</sup> Some Trac Lok applications may have used 2 snap rings (35660) instead of 1 differential shaft lock (13449).