

2007 RANGER



BOLD MOVES



Maximum Range

Hardworking, sharp-dressed, and always up for adventure, Ranger expands all your options. Use it for work and tow up to 6000 lbs.* Need to explore? Get a Ranger FX4 4x4 and get out there. STX and SPORT add custom features to let you break out of the pack. You can pass the pump more often with the best fuel economy of any pickup, and get the only 7-ft. box available in the class.** New for 2007, SIRIUS Satellite Radio is optional on Ranger premium audio systems. We've also added the Personal Safety System® for extra confidence on the road. But here's all you really need to know: This is the only pickup in its class that's Built Ford Tough. Ranger's ready to roam. Are you?

Ranger Strengths

- Best Fuel Economy of Any Pickup in North America†
- Class-Exclusive 7-ft. Cargo Box Option**
- Payload Up to 1660 lbs.*
- Towing Up to 6000 lbs.*
- Standard Personal Safety System
- Standard Tire Pressure Monitoring System
- Optional SIRIUS Satellite Radio System
- Optional MP3 Capability and Auxiliary Audio Input Jack

*When properly equipped. See your Ford Dealer for a copy of the Trailer Towing Guide. **Class is compact pickups.

†4x2 with 2.3L I-4 engine and 5-speed manual transmission. Based on EPA-estimated mileage for 2007 Ranger with 2007 model year pickups.

fordvehicles.com

SPECIFICATIONS **1**

MODEL LINEUP

Each series includes the standard equipment of the previous series, except where additions/exceptions are noted. Vehicle shown may feature optional equipment.



XL

2.3L DOHC I-4 engine • 5-speed manual transmission with overdrive • Black H-bar grille • Black front and rear bumpers • Manual sideview mirrors • Personal Safety System® with Front-Passenger Sensing System • AM/FM stereo with clock • Manual windows • Black vinyl floor covering • Black urethane steering wheel • Vinyl 60/40 split bench seat (cloth on SuperCab) • SecuriLock® passive anti-theft ignition system • Tire Pressure Monitoring System

4x2: 15" steel wheels with P225/70R15 all-season BSW tires

4x4: 3.0L OHV V6 • Electronic Shift-On-the-Fly • 15" 7-spoke silver-painted steel wheels with P235/75R15 all-terrain OWL tires



STX

2.3L DOHC I-4 engine • Black horizontal-slat grille with body-color surround • Body-color front and rear bumpers • Body-color door handles and sideview mirror caps • Fog lamps • 15" split-spoke machined cast-aluminum wheels • Cloth sport bucket seats with red or blue two-tone inserts • Rear jump seats (4-door SuperCab V6 only) • Black rugged vinyl floor covering



XLT

2.3L DOHC I-4 engine • Air conditioning • Color-coordinated carpet and carpeted front floor mats • AM/FM stereo/single-CD player with MP3/SAT capability • Cloth 60/40 split bench seat • Black door handles and sideview mirror caps

4x2: Black bar-style grille • Black front and rear bumpers • 15" 7-spoke silver-painted steel wheels with P225/70R15 all-season BSW tires

4x4: 3.0L OHV V6 • Chrome H-bar grille • Body-color front and rear bumpers • Fog lamps • Tow hooks • Side step bars (SuperCab) • 15" 7-spoke chrome-clad steel wheels with P235/75R15 all-terrain OWL tires (Regular Cab) • 16" Y-spoke cast-aluminum wheels with silver-painted insets and P255/70R16 all-terrain OWL tires (SuperCab)



SPORT

3.0L OHV V6 engine • Body-color H-bar grille • Body-color front and rear bumpers • Body-color wheel-lip moldings • Body-color sideview mirror caps • Black rugged vinyl floor covering • Fog lamps • Front torsion bar suspension • Heavy-duty shock absorbers

4x2: 15" 7-spoke silver-painted steel wheels with P235/75R15 all-terrain OWL tires

4x4: 15" 7-spoke chrome-clad steel wheels with P235/75R15 all-terrain OWL tires (Regular Cab) • 16" Y-spoke cast-aluminum wheels with silver-painted insets and P255/70R16 all-terrain OWL tires (SuperCab) • Tow hooks



FX4 OFF-ROAD

4.0L SOHC V6 engine • Body-color bar-style grille • Accent-color front and rear bumpers • Limited-slip rear axle • Molded-in-color wheel-lip moldings • Power sideview mirrors • Black sideview mirror caps • 2 skid plates • 16" Y-spoke cast-aluminum wheels with silver-painted insets and P255/70R16 all-terrain OWL tires • Leather-wrapped tilt steering wheel with cruise control • Power Equipment Group • Black rugged vinyl floor covering with front slush-type floor mats • Rear jump seats • Privacy glass

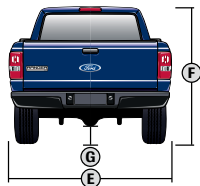
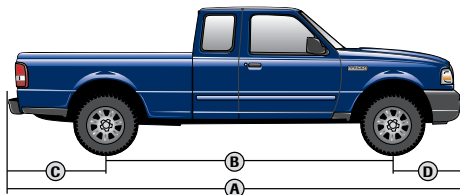


FX4 LEVEL II

4.0L SOHC V6 engine • Body-color H-bar grille • Torsen® limited-slip rear axle • Stainless steel front tow hooks • Black rear tow hook • 15" Alcoa® forged-aluminum wheels with Dark Shadow Grey paint and BFGoodrich® T/A KO 31" x 10.5" all-terrain RWL tires • 3 skid plates • Bilstein® shocks • Front cloth sport bucket seats • Chrome shifter on manual transmission • Sliding rear window with privacy glass

SPECIFICATIONS

DIMENSIONS



EXTERIOR	REGULAR CAB 4x2/4x4	SUPERCAB 4x2/4x4
A. Overall length		
6' box	189.4"/189.0"	203.7"
7' box	198.4"	—
B. Wheelbase		
6' box	111.5"/111.6"	125.7"/125.9"
7' box	117.5"/117.6"	—
C. Overhang - rear		
6' box	43.9"	44.0"/43.8"
7' box	46.9"/46.8"	—
D. Overhang - front	34.0"/33.5"	34.0"
E. Overall width	69.3"/70.4"	69.4"
F. Height	66.2"/68.3"	66.3"/69.4"
G. Ground clearance (rear axle)	7.7"	7.7"
Ground to open tailgate height	29.7"/31.9"	29.5"/33.5"
Ramp breakover angle	22.4°/23.8°	19.5°/22.5°
Angle of departure	24.8°/27.6°	24.3°/29.6°
Angle of approach	23.5°/27.7°	23.6°/28.0°
INTERIOR		
Front		
Head room	39.2"	39.2"
Shoulder room	54.5"	54.5"
Hip room	52.7"	52.7"
Leg room	42.4"	42.4"
Rear		
Head room	—	33.3"
Shoulder room	—	14.0"
Hip room	—	19.4"
Leg room	—	40.1"
Cargo Box	6'7'	6'
Volume (cu. ft.)	37.4/43.6	37.4
Length at floor	72.7"/84.6"	72.7"
Width at wheelhouse	40.5"	40.5"
Rear opening width at top	54.3"	54.3"
Height	16.5"	16.5"

MAXIMUM LOADED TRAILER WEIGHT* (lbs.)

MANUAL TRANSMISSION			REGULAR CAB		SUPERCAB	
ENGINE	AXLE RATIO	GCWR (LBS.)	4x2	4x4	4x2	4x4
2.3L DOHC I-4	3.73/4.10	4800	1580	—	—	—
3.0L OHV V6	3.73	6000	2640	—	2460	—
	4.10**	6000	2500	—	2340	—
	4.10	6000	—	2320	—	—
4.0L SOHC V6	3.55	7000	—	—	3380/3260**	—
	4.10	7000	—	3200	—	3080†

AUTOMATIC TRANSMISSION			REGULAR CAB		SUPERCAB	
ENGINE	AXLE RATIO	GCWR (LBS.)	4x2	4x4	4x2	4x4
2.3L DOHC I-4	4.10	5500	2240	—	—	—
3.0L OHV V6	3.73	6000	2600/2540††	—	2420	—
	4.10**	6000	2420	—	2280	—
	4.10	6000	—	2300	—	—
4.0L SOHC V6	3.55	9500	6000††	—	5860	—
	3.55**	9500	—	—	5720	—
	4.10	9500	—	5640††	—	5560‡

*NOTE: Ranger does not have an electric brake wiring provision. Certain states require electric trailer brakes over a specified trailer weight. In those states, the Ranger maximum trailer weight is limited to the state regulation. Check your state's trailer weight regulations. **Ranger SPORT only. †2740 with FX4 LEVEL II. ††Requires 7-ft. box. ‡5220 with FX4 LEVEL II.

ENGINES

	2.3L DOHC 16-VALVE I-4	3.0L OHV 12-VALVE V6	4.0L SOHC 12-VALVE V6
Horsepower (hp @ rpm)	143 @ 5250	148 @ 4900	207 @ 5250
Torque (lb.-ft. @ rpm)	154 @ 3750	180 @ 3950	238 @ 3000

2007 EPA-ESTIMATED FUEL ECONOMY (mpg)^{§§}

ENGINE	TRANSMISSION	4x2		4x4	
		CITY	HIGHWAY	CITY	HIGHWAY
2.3L DOHC I-4	5-Speed Manual	24	29	—	—
	5-Speed Automatic	21	26	—	—
3.0L OHV V6	5-Speed Manual	18	23	17	21
	5-Speed Automatic	17	21	16	20
4.0L SOHC V6	5-Speed Manual	17	22	17	20
	5-Speed Automatic	17	21	15	19

§§ Actual mileage may vary with driving habits.

Comparisons based on 2007 competitive models, publicly available information and Ford certification data at time of printing. Some features discussed may be optional. Vehicles shown may contain optional equipment. Features shown may be offered only in combination with other options or subject to additional ordering requirements or limitations. Dimensions and capability ratings shown may vary due to optional features and/or production variability. Following publication of the catalog, certain changes in standard equipment, options and the like, or product delays may have occurred which would not be included in these pages. Your Ford Dealer is the best source for up-to-date information. Ford Division reserves the right to change product specifications at any time without incurring obligations.

FEATURES & OPTIONS

XL						
STX						
XLT						
SPORT						
FX4 OFF-ROAD						
FX4 LEVEL II						
INTERIOR (continued)						
●	—	—	—	—	—	Floor covering — Black vinyl
—	●	—	●	●	●	Floor covering — Black rugged vinyl
—	—	●	—	—	—	Floor covering — Color-coordinated carpet
—	—	○	—	●	●	Floor mats — Black vinyl, slush-type (front only)
—	—	●	—	—	—	Floor mats — Carpeted (front only)
—	●	●	—	●	●	Steering wheel — Leather-wrapped*
○	○	○	○	●	●	Steering wheel — Tilt, with cruise control
EXTERIOR						
●	●	●	●	—	—	2-door Regular Cab
○	○	○	○	●	—	2-door SuperCab
—	○	○	○	○	●	4-door SuperCab
○	○	○	○	○	○	Bedliner — Under-rail
—	—	—	—	●	●	Bedrail and tailgate lip protector — 3-piece
○	○	○	○	—	—	Bodyside moldings — Body-color
●	—	●	—	—	—	Bumpers — Black (XLT 4x2)
—	●	—	—	—	—	Bumpers — Body-color with black inserts
—	—	●	●	—	—	Bumpers — Body-color with black lower valance
—	—	—	—	●	●	Bumpers — Dark Shadow Grey with black lower valance
●	●	●	●	●	●	Cargo box — 6-ft.
●	—	●	—	—	—	Cargo box — 7-ft. (Regular Cab only)
—	○	○	○	○	○	Cargo cage bed extender (not available with bedliner)
—	●	●	●	●	●	Fog lamps (XLT 4x4 only)
●	—	●	—	—	—	Grille — Black H-bar (XLT 4x2 only)
—	●	—	—	—	—	Grille — Black horizontal-slat insert with body-color surround
—	—	●	—	—	—	Grille — Chrome H-bar (XLT 4x2 Appearance Package and 4x4)
—	—	—	●	●	●	Grille — Body-color H-bar
○	○	○	○	●	●	Privacy glass (SuperCab only)
—	○	●	●	—	—	Side step bars — Black (standard on SuperCab 4x4)
●	—	—	—	—	—	Sideview mirrors — Manual, black
—	●	—	●	—	—	Sideview mirrors — Manual with body-color cap
—	—	●	—	●	—	Sideview mirrors — Chrome (included in Bright Appearance Package and Bright Trim Group)
—	—	—	—	●	●	Sideview mirrors — Power, black
○	○	○	○	○	●	Sliding rear window (requires privacy glass)
—	—	●	●	●	—	Tow hooks — 2 black steel in front (4x4 only)
—	—	—	—	—	●	Tow hooks — 2 stainless steel in front and 1 black steel in rear**
○	—	○	○	○	○	Trailer tow — Class III hitch receiver
—	—	—	●	—	—	Wheel-lip moldings — Body-color
—	—	—	—	—	●	Wheel-lip moldings — Molded-in-color
PACKAGES						
—	—	●	●	—	—	BFT Component Package — Includes limited-slip rear axle, Payload Package #2 and Class III Trailer Tow Package (requires V6 engine; not available on SPORT 4x2)
—	—	○	○	—	—	Bright Appearance Package (requires Appearance Package on XLT 4x2) — Includes chrome sideview mirror caps, chrome bed rails with black end caps, chrome side step bars with non-skid surface and exhaust tip (SuperCab only)
—	○	○	○	○	—	Bright Trim Group† — Includes chrome sideview mirror caps, chrome side step bars with non-skid surface and exhaust tip (SuperCab only)
○	○	○	●	○	—	Payload Package #2 — Includes increased rear spring rates and heavy-duty gas-charged shocks on 4x2 or increased rear spring rates and heavy-duty gas-charged shocks on 4x4 (not available on SPORT 4x2)
—	○	○	○	●	●	Power Equipment Group — Includes power windows, door locks and sideview mirrors with remote keyless-entry system
—	—	—	●	—	—	TREMOR Package†† — Includes 510-watt Pioneer® AM/FM stereo/6-disc in-dash CD changer with MP3/SAT capability; (4) 6" x 8" coaxial speakers and rear-floor-mounted enclosure box for 10" bass subwoofer and multi-channel amplifier; 16" twin-spoke cast-aluminum wheels with P235/70R16 all-season OWL tires (4x2) or 16" Y-spoke cast-aluminum wheels with P255/70R16 all-terrain OWL tires (4x4) and TREMOR decal (SuperCab with automatic transmission only)
—	—	○	—	—	—	XLT 4x2 Appearance Package — Includes body-color bumpers, chrome grille, fog lamps, 15" 7-spoke chrome-clad steel wheels or optional 15" "split-spoke" machined cast-aluminum wheels and P225/70R15 all-season OWL tires

††SuperCab only. Rear jump seats not available.

WHEELS



15" Argent-Painted
Steel Wheel



15" 7-Spoke Silver-Painted Steel Wheel



15" 7-Spoke Chrome-Clad
Steel Wheel



15" "Split-Spoke" Machined
Cast-Aluminum Wheel



16" Twin-Spoke
Cast-Aluminum Wheel
with Silver-Painted Insets



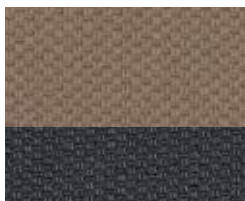
15" Alcoa 8-Hole
Dark Shadow Grey-Painted
Forged-Aluminum Wheel



16" Y-Spoke
Cast-Aluminum Wheel
with Silver-Painted Insets



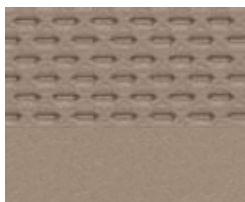
15" Alcoa 8-Hole Polished
Forged-Aluminum Wheel



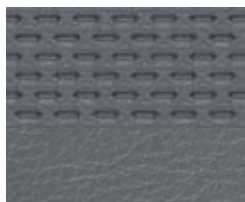
Medium Pebble Tan Cloth



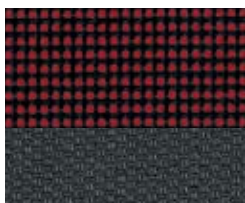
Medium Dark Flint Cloth



Medium Pebble Tan Vinyl



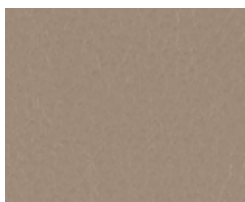
Medium Dark Flint Vinyl



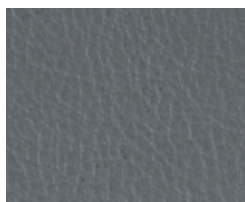
Ebony/Red Cloth



Ebony/Blue Cloth



Medium Pebble Tan Leather



Medium Dark Flint Leather



Solid Ebony Leather

MEDIUM PEBBLE TAN				
MEDIUM DARK FLINT				
EBONY/RED				
EBONY/BLUE				
SOLID EBONY				
XL				
●	●			Oxford White
●	●			Dark Shadow Grey Metallic
●	●			Black
●	●			Pueblo Gold Metallic
●	●			Silver Metallic*
STX				
	●	●		Oxford White
		●	●	Vista Blue Metallic
	●	●		Torch Red
	●	●		Redfire Metallic
		●	●	Dark Shadow Grey Metallic
	●	●		Black
		●	●	Silver Metallic*
SPORT				
●	●			Oxford White
	●			Vista Blue Metallic
	●			Torch Red
●	●			Redfire Metallic
	●			Dark Shadow Grey Metallic
●	●			Black
●	●			Silver Metallic*
TREMOR				
	●			Oxford White
	●			Vista Blue Metallic
	●			Torch Red
	●			Redfire Metallic
	●			Dark Shadow Grey Metallic
	●			Black
	●			Silver Metallic*
XLT/FX4 OFF-ROAD**				
●	●			Oxford White
	●			Vista Blue Metallic
	●			Torch Red
●	●			Redfire Metallic
	●			Dark Shadow Grey Metallic
●	●			Black
	●			Silver Metallic*
FX4 LEVEL II**				
	●	●		Oxford White
		●	●	Vista Blue Metallic
	●	●		Torch Red
	●	●		Redfire Metallic
		●	●	Dark Shadow Grey Metallic
	●	●		Black
		●	●	Silver Metallic*

*Limited production; Silver Metallic available late Fall 2006. **FX4 OFF-ROAD and FX4 LEVEL II standard two-tone paint lower portion is Dark Shadow Grey for all colors except for Dark Shadow Grey Metallic. Two-tone Dark Shadow Grey Metallic upper exterior color will receive Black lower body color.

EXTERIORS



Oxford White



Vista Blue Metallic



Torch Red



Redfire Metallic



Dark Shadow Grey Metallic



Black



Pueblo Gold Metallic



Silver Metallic

Ranger XLT SuperCab 4x2 with XLT 4x2 Appearance Package and optional 15" "split-spoke" machined cast-aluminum wheels shown. Pueblo Gold available on XL only (shown with optional equipment). Ford uses clearcoat paint for beauty and protection. Colors shown are representative only. Not all colors are available on all models. See your dealer for actual paint/trim options.



New Vehicle Limited Warranty

We want your Ford Ranger ownership experience to be the best it can be. So under this warranty, your new vehicle comes with 3-year/36,000-mile Bumper-to-Bumper Coverage, 5-year/50,000-mile Safety Restraint Coverage, and 5-year/unlimited-mile Corrosion (Perforation) Coverage — all with no deductible. Please ask your Ford Dealer for a copy of this limited warranty.

For more assurance: There's now a 5-year/60,000-mile powertrain limited warranty that's fully transferable, has no deductible, and provides you with an additional 2 years or 24,000 miles of coverage — on select components, including the engine and transmission — beyond the standard 3-year/36,000-mile Bumper-to-Bumper Coverage. Plus, Roadside Assistance is extended to 5 years or 60,000 miles, so you have the security of knowing that help may be only a phone call away should you run out of fuel, lock yourself out of the vehicle, or need towing. Your Ford Dealer can provide complete details on all of these advantages.



Get the ride you want. Whether you plan to lease or finance, you'll find the choices that are right for you at Ford Credit. Ask your Ford Dealer for details, or check us out at www.fordcredit.com.



Get Ford Motor Company quality in your auto insurance. Our program offers industry-leading benefits and competitive rates. Call 1-877-367-3847, or visit us at www.fordvip.com for a no-obligation quote. Insurance offered by American Road Services Company (in CA, American Road Insurance Agency), a licensed agency and subsidiary of Ford Motor Company.



For a purchase or lease, the Ford **Extended Service Plan** (ESP) gives you "Peace-of-Mind" protection designed to cover key vehicle components and protect you from the cost of unexpected repairs. Ask your dealer for an ESP, the only service contract backed exclusively by Ford and honored at all Ford Lincoln Mercury dealerships.



Genuine Ford Accessories are designed and engineered specifically for Ford vehicles. Visit our website at www.fordaccessoriesstore.com to use the Accessorizer, and to learn about complete accessory details and purchase instructions.