



F-150 FX4 Regular Cab 4x4 in Dark Blue Pearl shown on a closed course with a professional driver demonstrating the off-road abilities that exemplify F-150 FX4 toughness and capability.

Best-in-Class¹

- Strongest Frame
- Towing – 11,000 lbs.
Payload – 3,080 lbs.
- Selection of Models, Trim and Cargo Box Configurations
- Maximum Cargo Box Volume

Class-Exclusives

- 4-Door Regular Cab
- 5.4L 3-Valve Triton® V8 Engine with Variable Cam Timing
 - Overhead Rail Modular Interior Storage System

New for 2008

Most Capable Cargo Management System • Reverse Camera System

The 2008 Ford F-150: There's Only One #1

YOU BE THE JUDGE. A pickup is measured by what it can do, and by that standard, F-150 is the undisputed champion. Its payload and towing numbers are best-in-class. Those numbers are built on the strongest frame in the class. Innovative new features deliver utility and convenience you won't find on any other truck. Even its driver and right-front passenger frontal crash test ratings are the best there are: 5 Stars. Hardworking, smooth-riding and Built Ford Tough,[®] F-150 is pure F-Series; the trucks with more vehicles still on the road after 250,000 miles than any other.² Of course, you've given F-Series the most important title of all – America's #1-selling line of trucks for 30 years in a row.

¹Properly equipped Traditional Full-Size Pickups under 8500 lbs. GVWR.

²Based on vehicle registration data and latest odometer readings available to R.L. Polk & Co. for 1992 and newer model year full-size pickups still on the road in the U.S. as of 1/1/07.

NOTE: Vehicles throughout this PDF may be shown with optional and aftermarket equipment.

MODEL LINEUP

Each series includes the standard equipment of the previous series, except where additions/exceptions are noted. Vehicles shown may contain optional equipment.



XL

Argent front and rear step bumpers • Black grille surround, H-bar grille and front bumper upper fascia • Black manual sideview mirrors (Regular Cab and SuperCab) • Black, power sideview mirrors (SuperCrew) • 17" grey styled-steel wheels • Solar-tinted glass with fixed rear window • Air conditioning (SuperCab and SuperCrew) • AM/FM stereo with clock (Regular Cab and SuperCab) • AM/FM stereo with single-CD player (SuperCrew) • Visors with driver-side strap and passenger-side mirror • Black urethane steering wheel • Black vinyl floor covering (Regular Cab and SuperCab) • Color-coordinated carpet and floor mats (SuperCrew) • Vinyl 40/20/40 split front seat (Regular Cab and SuperCab) • Cloth 40/20/40 split front seat (SuperCrew) • Tire Pressure Monitoring System • Display center • Rear vinyl 60/40 split flip-up seat (SuperCab) • Rear cloth 60/40 split flip-up seat (SuperCrew) • Power windows and door locks (SuperCrew)



STX

Body-color front and rear step bumpers, grille surround and front bumper upper fascia • 17" chrome-clad steel wheels • Air conditioning • AM/FM stereo/single-CD player • Auxiliary audio input jack • Cloth 40/20/40 split front seat with driver manual lumbar • Front-seat center armrest with storage bin and cupholders • Rear cloth 60/40 split flip-up seat (SuperCab) • Rear cupholders (SuperCab) (available Flareside model shown)



XLT

Chrome front and rear step bumpers • Black honeycomb-style grille with chrome surround • Remote keyless-entry system • Power sideview mirrors • 17" chrome-clad steel wheels • Autolamp • Power accessory delay • Color-coordinated carpet and floor mats • Tachometer • Cruise control • Color-coordinated steering wheel • Visors with covered mirrors • Power windows, including 2nd-row on SuperCab and SuperCrew • Power door locks • Outside temperature and compass display • Premium cloth 40/20/40 split front seat • Premium cloth rear 60/40 split flip-up seat (SuperCab or SuperCrew) • Rear cupholders (SuperCab and SuperCrew) • Fixed rear window with privacy tint



FX4

FX4 OFF-ROAD decals • Color-coordinated front and rear step bumpers • Black H-bar grille with body-color surround • Dark grey wheel-lip moldings • Keyless-entry keypad • Black leather-wrapped steering wheel • Black rubber off-road floor mats • Sport cloth 40/20/40 split front seat with driver and right-front-passenger manual lumbar • 18" machined cast-aluminum wheels • Electronic Shift-On-the-Fly (ESOF) 4x4 • Limited-slip rear axle • Off-road tuned shocks • Skid plates – 2 steel (front crossmember and transfer case), 1 composite (fuel tank)



LARIAT

Chrome front/rear step bumpers and color-coordinated wheel-lip moldings (with monotone paint) • Pueblo Gold front/rear step bumpers and wheel-lip moldings (with two-tone paint) • Light Pueblo Gold honeycomb-style grille with chrome surround • Power, heated sideview mirrors with turn-signal indicator and auto-dimming driver side • 18" bright-aluminum wheels • Lighted, covered visor vanity mirrors • Electronic Automatic Temperature Control (EATC) • Rear-window defroster • Color-coordinated carpeted floor mats • Message center • Color-coordinated, leather-wrapped steering wheel with secondary audio and climate controls • Power driver seat • Leather-trimmed front seats • Auto-dimming rearview mirror

Comparisons based on 2007 and 2008 competitive models, publicly available information and Ford certification data at time of release. Some features discussed may be optional. Vehicles shown may contain optional equipment. Features shown may be offered only in combination with other options or subject to additional ordering requirements or limitations. Dimensions and capability ratings shown may vary due to optional features and/or production variability. Following publication of the catalog, certain changes in standard equipment, options and the like, or product delays may have occurred which would not be included in these pages. Your Ford Dealer is the best source for up-to-date information. Ford Division reserves the right to change product specifications at any time without incurring obligations.

STANDARD FEATURES



XL Gauge Group



STX Gauge Group



XLT Gauge Group



FX4 Gauge Group



LARIAT Gauge Group

MECHANICAL

100,000-mile tune-up interval¹
 Electronic Brakeforce Distribution (EBD)
 Fail-safe engine cooling system
 Gas-pressurized shock absorbers
 Hood-open assist mechanisms
 Lightweight aluminum hood
 Maintenance-free 58-amp.-hr., 540-CCA battery with battery saver
 Power 4-wheel vented-disc brakes with Anti-lock Brake System (ABS)
 Power rack-and-pinion steering
 Spare tire with wheel lock
 Stabilizer bar – Front
 Stainless steel exhaust system (major components)
 Suspension – Front: long-spindle, double-wishbone coil-over-shock; rear: leaf springs
 Tire Pressure Monitoring System (excluding spare)
 Trailer tow – 4-pin connector

SAFETY/SECURITY

Personal Safety System[®] for driver and right-front passenger – Includes dual-stage front airbags², safety belt pretensioners, safety belt energy-management retractors, safety belt usage sensors, driver-seat position sensor, crash severity sensor, restraint control module and Front-Passenger Sensing System³
 2-point front center restraint (SuperCab and SuperCrew)
 3-point restraints – All front-outboard-seating positions, all rear-seat positions and Regular Cab front-center position
 Alert chimes – Headlamps-on, key-in-ignition and safety belt
 Belt-Minder[®] safety belt reminder – Driver and right-front passenger
 Brake/shift interlock
 Fuel pump inertia shutoff switch
 LATCH – Lower anchors and tether anchors for child-safety seats
 Seat-Integrated Restraints (SIR) – Driver and right-front passenger (Regular Cab and SuperCab only)
 Non-SIR restraints – Driver and right-front passenger (SuperCrew only)
 SecuriLock[®] passive anti-theft ignition system
 Side-intrusion door beams

INTERIOR

Assist/grab handles – Driver and right-front passenger
 Coat hooks – 2
 Cupholders – Front: 2 on instrument panel (n/a with Mechanical Shift-On-the-Fly) and 1 in each front-door map pocket
 Display center
 Front dome or map lights
 Front-door map pockets
 Gauges – Fuel, voltmeter, oil pressure, engine coolant temperature, speedometer and odometer
 Glove compartment
 Horn – Dual-note
 Power points – Front (all models) and rear (in SuperCab and SuperCrew models)
 Tilt steering wheel

EXTERIOR

Cargo box lamp – Integrated into center high-mounted stop lamp
 Cargo box tie-downs – 4
 Headlamps – Aerodynamic clear-lens quad-beam halogen
 Stake-bed pockets (n/a with Flareside or 5.5' box)
 Tailgate – Removable with key lock and Tailgate Assist[™]
 Tow hooks – 2 in front (4x4 only)
 Windshield wipers – Intermittent

¹Under normal driving conditions with routine fluid and filter changes.

²Always wear your safety belt, and in SuperCab and SuperCrew models, always secure children in the rear seat.

³Right-front-passenger seat only.

Vehicles shown may contain optional equipment.

FEATURES & OPTIONS

	XL	STX	XLT	FX4	LARIAT	
MECHANICAL						
● ● ● — —	●	●	●	—	—	4.2L V6 with 5-speed manual O/D (n/a with Flareside; 4x2 Regular Cab only)
○ ○ ○ — —	○	○	○	—	—	4.2L V6 with 4-speed automatic O/D (4x2 Regular Cab; standard with Flareside)
● ● ● — —	●	●	●	—	—	4.6L SOHC Triton® V8 with electronic 4-speed auto. O/D
● ○ ○ ● ●	●	○	○	●	●	5.4L SOHC 3-valve Triton V8 with electronic 4-speed auto. O/D
● ○ ○ ○ ○	●	○	○	○	○	5.4L SOHC 3-valve FFV (Flex. Fuel) Triton V8 with electronic 4-speed auto. O/D ¹
○ ○ ○ ● ●	○	○	○	●	●	Axle upgrade (see Axle Availability chart for details)
○ ○ ○ ● ○	○	○	○	●	○	Axle — Limited-slip rear (see Axle Availability chart for details)
● — — — —	●	—	—	—	—	17" grey styled-steel wheels
— ○ — — —	—	○	—	—	—	17" machined-aluminum wheels
○ ● ● — —	○	●	●	—	—	17" chrome-clad steel wheels (XL SuperCrew only)
— — ○ — —	—	—	○	—	—	17" machined-aluminum wheels with painted accents
● — ● — —	●	—	●	—	—	17" 7-lug grey steel wheels (requires Heavy-Duty Payload Package; Regular Cab and SuperCab only)
— — — ● —	—	—	—	●	—	18" machined cast-aluminum wheels
— — — ● ●	—	—	—	●	●	18" bright-aluminum wheels
— — ● — —	—	—	●	—	—	20" painted cast-aluminum wheels (requires FX2 SPORT Package; n/a with 133" WB)
— — — ● ●	—	—	—	●	●	20" 6-spoke machined-aluminum wheels
● — ● — —	●	—	●	—	—	P235/70R17 all-season BSW tires (5) — 4x2 (Regular Cab and SuperCab)
● — ● — —	●	—	●	—	—	P235/75R17 all-terrain BSW tires (5) — 4x4 (Regular Cab and SuperCab)
● ● ● — —	●	●	●	—	—	P255/65R17 all-season OWL tires (4) — 4x2 (optional on XL and XLT Regular Cab and SuperCab; standard on SuperCrew)
● ● ● — —	●	●	●	—	—	P255/70R17 all-terrain OWL tires (4) — 4x4 (optional on XL and XLT Regular Cab and SuperCab; standard on SuperCrew)
— — — ● —	—	—	—	●	—	P265/60R18 all-season OWL tires (5) — 4x2
— — — ● ●	—	—	—	●	●	P275/65R18 all-terrain OWL tires (4) — 4x4
— — ● ○ ○	—	—	●	○	○	P275/55R20 all-terrain OWL tires (4)
● — ● — —	●	—	●	—	—	LT245/70R17D all-terrain BSW tires (5) — 4x2/4x4 (requires Heavy-Duty Payload Package; Regular Cab and SuperCab only)
— — — ○ ○	—	—	○	○	○	LT275/65R18C all-terrain OWL tires (4) — 4x4
● ● ● ● ●	●	●	●	●	●	Fuel tank — 26-gallon (126" WB on Regular Cab; 133" WB on SuperCab)
● ● ● ● ●	●	●	●	●	●	Fuel tank — 27-gallon (145" WB on Regular Cab and SuperCab; 150" WB on SuperCrew)
● — ● ● ●	●	—	●	●	●	Fuel tank — 30-gallon (SuperCrew 5.5' box)
● ● ● ● ●	●	●	●	●	●	Fuel tank — 35.7-gallon (Regular Cab 8' box; SuperCab and SuperCrew 6.5' box)
○ ○ ○ — —	○	○	○	—	—	Traction Control (4x2 V8)
— — ○ ○ ○	—	—	○	○	○	Reverse Sensing System (requires Trailer Tow Package)
4x4-ONLY FEATURES						
● ● ● — —	●	●	●	—	—	Mechanical Shift-On-the-Fly transfer case (Regular Cab and SuperCab)
● ● ● ● ●	●	●	●	●	●	Electronic Shift-On-the-Fly (ESOF) transfer case (std. on SuperCrew)
○ — ○ ● ○	○	—	○	●	○	Skid plates — Steel plates for front crossmember and transfer case; composite plate for fuel tank
SEATING						
● — — — —	●	—	—	—	—	Front vinyl 40/20/40 split (Regular Cab and SuperCab)
● ● — — —	●	●	—	—	—	Front cloth 40/20/40 split with driver manual lumbar
— — ● — —	—	—	●	—	—	Front premium cloth 40/20/40 split with driver manual lumbar
— — — ● —	—	—	—	●	—	Front sport cloth 40/20/40 split with dual manual lumbar
— — — ● ●	—	—	—	●	●	Front leather-trimmed 40/20/40 split with dual manual lumbar
○ ○ — — —	○	○	—	—	—	Front cloth captain's chairs with center console and driver manual lumbar (SuperCab only; 4x4 requires ESOF)
○ — — — —	○	—	—	—	—	Front vinyl captain's chairs with center console (SuperCab; 4x4 requires ESOF)
— — ● — —	—	—	●	—	—	Front premium cloth captain's chairs with center console and driver manual lumbar (SuperCab and SuperCrew; SuperCab 4x4 requires ESOF)
— — — ○ —	—	—	—	○	—	Front sport cloth captain's chairs with flow-through console and floor shifter ² (SuperCab and SuperCrew)
— — ● ○ —	—	—	●	○	—	Front sport leather-trimmed captain's chairs with flow-through console and floor shifter ³ (SuperCab and SuperCrew only)
— — — ○ ○	—	—	—	○	○	Front leather-trimmed captain's chairs with flow-through console and floor shifter
— — ○ ○ ●	—	—	○	○	●	Power driver seat (SuperCab and SuperCrew)
● — — — —	●	—	—	—	—	Rear vinyl 60/40 split flip-up seat (SuperCab)
— — ● ● ●	—	—	●	●	●	Rear premium vinyl 60/40 split flip-up seat ³ (SuperCab and FX2/FX4 SuperCrew)
● ● ● ● ●	●	●	●	●	●	Rear cloth 60/40 split flip-up seat (SuperCab and SuperCrew)
— — — ● ●	—	—	—	●	●	Rear leather-trimmed 60/40 split flip-up seat (SuperCrew)

● Standard ● Select Availability ○ Optional — Not Available
¹Not available with Flareside Box, Heavy-Duty Payload Package or Ford Harley-Davidson™ F-150 Package. ²Requires power driver seat. XLT requires FX2 SPORT Package. ³Requires with 5.4L engine on XL Regular Cab. ⁴Service not available in Alaska or Hawaii. See your Ford Dealer or contact SIRIUS at 1-888-539-7474 for more information.
 Audiophile is a registered trademark of Audiophile, Inc. © 2007 SIRIUS Satellite Radio Inc. "SIRIUS," the SIRIUS dog logo and "The Best Radio on Radio" are registered trademarks of SIRIUS Satellite Radio Inc.

	XL	STX	XLT	FX4	LARIAT	
INTERIOR						
● ● ● ● —	●	●	●	●	—	Air conditioning — Manual ⁴ (standard on XL SuperCab and SuperCrew)
— — — ● —	—	—	—	●	—	Air conditioning — Electronic Automatic Temperature Control (EATC)
— — — — ●	—	—	—	—	●	AM/FM stereo with clock (Regular Cab and SuperCab)
● ● ● ● ●	●	●	●	●	●	AM/FM stereo/single-CD player with MP3 capability, auxiliary audio input jack and clock
○ ○ ○ ○ ○	○	○	○	○	○	AM/FM stereo/6-disc in-dash CD changer with MP3 capability, auxiliary audio input jack and clock
— ○ ● ○ ○	—	○	●	○	○	Audiophile® Sound System — Includes 6-disc in-dash CD changer with MP3 capability, subwoofer and auxiliary audio input jack
— — ○ ○ ○	—	—	○	○	○	Navigation Radio System — DVD-based with in-dash screen (SuperCab and SuperCrew)
— — ○ ○ ○	—	—	○	○	○	Navigation System and Audiophile Sound System (SuperCab and SuperCrew)
— ○ ○ ○ ○	—	○	○	○	○	SIRIUS Satellite Radio ⁵ — Includes integrated satellite receiver, roof-mounted antenna and 6-month subscription
● ● — — —	●	●	—	—	—	Black vinyl floor covering (Regular Cab and SuperCab)
● ○ ● — ●	●	○	●	—	●	Carpet — Color-coordinated with carpeted front and rear floor mats
— — ○ ● —	—	—	○	●	—	Carpet — Color-coordinated with black rubber off-road floor mats
— ○ ○ ○ ○	—	○	○	○	○	Carpet — Color-coordinated with carpeted floor mats and black rubber floor mats
○ ○ ● ● ●	○	○	●	●	●	Cruise control — Steering wheel-mounted
● — ● ● ●	●	—	●	●	●	Fade-to-off interior lighting (XL SuperCrew only)
○ — ● ● ●	○	—	●	●	●	Interior lights with rear dome light (SuperCab and SuperCrew)
— — — ● ●	—	—	—	●	●	Message center/trip computer — Includes display center features plus distance-to-empty, average fuel economy, low oil pressure, check-engine temp, fail-safe engine cooling mode, low brake fluid and more
— — ● ● ●	—	—	●	●	●	Outside temperature and compass display
— — ● ● ●	—	—	●	●	●	Overhead mini-console with small storage bin (Regular Cab)
● — ● ● ●	●	—	●	●	●	Overhead console with small storage bin (n/a with power moonroof or Regular Cab; XL SuperCrew only)
— — ○ ○ ○	—	—	○	○	○	Overhead Rail Storage System — Includes large storage bin and rear dome light (rear dome and map lights w/SuperCrew) (SuperCab and SuperCrew; n/a with power moonroof or Rear-Seat DVD Entertainment System)
● — ● ● ●	●	—	●	●	●	Power accessory delay (XL SuperCrew)
● ○ ○ ○ ○	●	○	○	○	○	Power-adjustable pedals (n/a with 4.2L V6 manual or XL SuperCrew)
● — ● ● ●	●	—	●	●	●	Power door locks with autolock (XL SuperCrew only)
● ● ● ● ●	●	●	●	●	●	Power Equipment Group — Includes power door locks, windows and sideview mirrors (XL SuperCrew only)
— — ○ ○ ○	—	—	○	○	○	Power moonroof — Includes overhead mini-console without storage bin (SuperCab and SuperCrew only; n/a with Overhead Rail Storage System or Rear-Seat DVD Entertainment System)
○ ○ ○ ● —	○	○	○	●	—	Rear cargo storage unit (Regular Cab; n/a with Audiophile Sound System)
● ● — — —	●	●	—	—	—	Rear window — Fixed with solar tint
● ● ● — —	●	●	●	—	—	Rear window — Fixed with privacy tint
○ ○ ○ ○ ●	○	○	○	○	●	Rear window — Fixed with privacy tint and defroster
○ ○ ○ ○ ○	○	○	○	○	○	Rear window — Manual sliding with privacy tint (n/a with defroster)
— — ○ ○ ○	—	—	○	○	○	Rear window — Power sliding with privacy tint (n/a with defroster; requires power driver seat; SuperCab and SuperCrew)
● ● ● ● ●	●	●	●	●	●	Tachometer (standard on XL and STX w/manual trans. or XL SuperCrew)
— — — ● ●	—	—	—	●	●	Universal Garage Door Opener
● ● — — —	●	●	—	—	—	Windows — 1st-row manual (Regular Cab and SuperCab)
● — ● ● ●	●	—	●	●	●	Windows — 1st-row power, solar-tinted, with one-touch-down driver-side feature (XL SuperCrew)
● ● ● ● —	●	●	●	●	—	Windows — 2nd-row fixed (XL and FX4 Regular Cabs; XL Regular Cab and SuperCab)
● — ● ● ●	●	—	●	●	●	Windows — 2nd-row power (SuperCab and SuperCrew; XL SuperCrew)
EXTERIOR						
○ — ○ — —	○	—	○	—	—	8' box — Styleside (Regular Cab)
● — ● — —	●	—	●	—	—	8' box — Styleside (SuperCab with Heavy-Duty Payload Package)
○ ○ ○ ○ —	○	○	○	○	—	6.5' box — Styleside (Regular Cab)
○ ○ ○ ○ ○	○	○	○	○	○	6.5' box — Styleside (SuperCab)
— ○ ○ ○ —	—	○	○	○	—	6.5' box — Flareside (Regular Cab/SuperCab)
○ — ○ ○ ○	○	—	○	○	○	6.5' box — Styleside (SuperCrew)
— ○ ○ ○ —	—	○	○	○	—	6.5' box — Flareside (SuperCrew)
— ○ ○ ○ ○	—	○	○	○	○	5.5' box — Styleside (SuperCab)
○ — ○ ○ ○	○	—	○	○	○	5.5' box — Styleside (SuperCrew)
— ○ ○ ○ ○	—	○	○	○	○	Bed extender (only available with 5.5' box)
○ ○ ○ ○ ○	○	○	○	○	○	Cargo Management System — Includes 4 tie-down cleats (6.5' Styleside)
○ ○ ○ ○ ○	○	○	○	○	○	Cargo Management System accessory — Front header bar
○ ○ ○ ○ ○	○	○	○	○	○	Cargo Management System accessory — Pickup box load bars (2)
○ ○ ○ ○ ○	○	○	○	○	○	Cargo Management System accessory — Pickup box storage bins (2)
○ ○ ○ ○ ○	○	○	○	○	○	Cargo Management System accessory — Pickup box divider

PAYLOAD PACKAGES

REGULAR CAB 4x2 STYLE SIDE			
WHEELBASE (IN.)	ENGINE	MAX. PAYLOAD (LBS.)	GVWR (LBS.)
126	4.2L	1930	6500
	4.6L	1990	6650
	5.4L	1830	6650
	5.4L	1770	6600 ¹
144.5	4.2L	1940	6650
	4.6L	2000	6800
	5.4L	2100	7050
	5.4L	3080	8200 ²

SUPERCAB 4x2 STYLE SIDE			
133	4.6L	1720	6650
	5.4L	1820	6950
144.5	4.6L	1670	6700
	5.4L	1910	7050
	5.4L	1830	7000 ¹
163	5.4L	2730	8200 ²

SUPERCREW FORD HARLEY-DAVIDSON™ 4x2 STYLE SIDE			
139	5.4L	1090	6550

SUPERCREW 4x2 STYLE SIDE			
139	4.6L	1720	6800
	5.4L	1810	7050
	5.4L	1090	6550 ³
150.5	4.6L	1620	6800
	5.4L	1750	7050

REGULAR CAB 4x4 STYLE SIDE			
126	4.6L	1840	6800
	5.4L	1740	6850
144.5	4.6L	1850	6950
	5.4L	1700	6950
	5.4L	2730	8200 ²

SUPERCAB 4x4 STYLE SIDE			
133	4.6L	1670	6900
	5.4L	1720	7150
144.5	4.6L	1630	6950
	5.4L	1760	7200
163	5.4L	2380	8200 ²

SUPERCREW FORD HARLEY-DAVIDSON™ AWD STYLE SIDE			
139	5.4L	1030	6750

SUPERCREW 4x4 STYLE SIDE			
139	4.6L	1480	6900
	5.4L	1660	7200
	5.4L	1030	6750 ³
150.5	4.6L	1450	6900
	5.4L	1630	7200

REGULAR CAB 4x2 FLARE SIDE			
126	4.2L	1910	6500
	4.6L	1970	6650
	5.4L	1810	6650

SUPERCAB 4x2 FLARE SIDE			
144.5	4.6L	1650	6700
	5.4L	1880	7050

SUPERCREW 4x2 FLARE SIDE			
150.5	4.6L	1600	6800
	5.4L	1730	7050

REGULAR CAB 4x4 FLARE SIDE			
126	4.6L	1820	6800
	5.4L	1720	6850

SUPERCAB 4x4 FLARE SIDE			
144.5	4.6L	1610	6950
	5.4L	1740	7200

SUPERCREW 4x4 FLARE SIDE			
150.5	4.6L	1430	6900
	5.4L	1610	7200

Note: All figures are subject to change.

MAXIMUM PAYLOAD

REGULAR CAB STYLE SIDE 4x2 – 3080 lbs.²
 REGULAR CAB FLARE SIDE 4x2 – 1970 lbs.
 SUPERCAB STYLE SIDE 4x2 – 2730 lbs.²
 SUPERCAB FLARE SIDE 4x2 – 1880 lbs.
 SUPERCREW STYLE SIDE 4x2 – 1810 lbs.
 SUPERCREW FLARE SIDE 4x2 – 1730 lbs.

¹STX Special Edition Package only. ²Requires Heavy-Duty Payload Package. ³LIMITED Package only.

MAXIMUM TOWING

REGULAR CAB 4x2 – 11,000 lbs.²
 REGULAR CAB 4x4 – 9500 lbs.²
 SUPERCAB 4x2 – 9500 lbs.²
 SUPERCAB 4x4 – 9400 lbs.²
 SUPERCREW 4x2 – 9500 lbs.
 SUPERCREW 4x4 – 9300 lbs.

WHEELS



17" Grey Styled-Steel (XL)



17" 7-Lug Grey Steel (Heavy-Duty Payload Package)



17" Chrome-Clad Steel (STX and XLT – standard; XL SuperCrew – available)



17" Machined-Aluminum (STX – available)



17" Machined-Aluminum with Painted Accents (XLT – available)



18" Silver-Painted Aluminum (STX Wheels & Stripes Package)



18" Chrome-Clad Aluminum (XLT and LARIAT Chrome Packages)



18" Aluminum Sport (FX2 SPORT Package)



18" Machined Cast-Aluminum (FX4)



18" Bright-Aluminum (LARIAT)



18" 7-Spoke Cast-Aluminum (KING RANCH®)



20" Painted Cast-Aluminum (FX2 SPORT – available)



20" 6-Spoke Machined-Aluminum (FX4, LARIAT and KING RANCH – available)



22" Polished Forged-Aluminum (LIMITED Package)



22" Polished Forged-Aluminum (Ford Harley-Davidson™ F-150 Package)

ENGINES



ENGINE	TRANSMISSION	HORSEPOWER (hp @ rpm)	TORQUE (lb.-ft. @ rpm)	2008 EPA-ESTIMATED FUEL ECONOMY ¹			
				4x2		4x4	
				CITY	HWY.	CITY	HWY.
4.2L EFI V6	5-speed man. O/D	202 @ 4350	260 @ 3750	14 mpg	20 mpg	—	—
	4-speed auto. O/D	202 @ 4350	260 @ 3750	14 mpg	19 mpg	—	—
4.6L Triton® V8	4-speed auto. O/D	248 @ 4750	294 @ 4000	14 mpg	19 mpg	13 mpg	17 mpg
5.4L 3-Valve Triton V8	4-speed auto. O/D	300 @ 5000	365 @ 3750	13 mpg	17 mpg	13 mpg	17 mpg

¹Actual mileage may vary with driving habits. 5.4L 3-valve Triton V8 4-speed auto. O/D AWD 13 mpg city/17 hwy.

AXLE AVAILABILITY

CAB	ENGINE	SERIES/PKG.	DRIVETRAIN	TIRES	NON-LIMITED-SLIP REAR AXLE				LIMITED-SLIP REAR AXLE		
					3.31	3.55	3.73	4.10	3.55	3.73	4.10
Regular Cab or SuperCab	4.6L	XL, XLT	4x2	P235/70R17 A/S BSW	—	●	○	—	○	○	—
Regular Cab or SuperCab	5.4L	XL, XLT	4x2	P235/70R17 A/S BSW	—	●	○	—	○	○	—
Regular Cab or SuperCab	Any	XL, XLT	4x4	P235/75R17 A/T BSW	—	●	○	—	○	○	—
Regular Cab	4.2L ²	XL, XLT	4x2	P235/70R17 A/S BSW	●	○	●	—	○	●	—
All	4.6L	XL, STX, XLT	4x2	P255/65R17 A/S OWL	—	●	○	—	○	○	—
All	5.4L	XL, XLT	4x2	P255/65R17 A/S OWL	—	●	○	—	○	○	—
Regular Cab or SuperCab ³	5.4L	STX	4x2	P255/65R17 A/S OWL	●	—	—	—	—	—	—
All	4.6L	XL, STX, XLT	4x4	P255/70R17 A/T OWL	—	○	●	—	●	○	—
All	5.4L	XL, XLT	4x4	P255/70R17 A/T OWL	—	●	○	—	○	○	—
Regular Cab	4.2L ²	XL, XLT	4x2	P255/65R17 A/S OWL	○	○	●	—	○	●	—
Regular Cab	4.2L	STX	4x2	P255/65R17 A/S OWL	—	●	●	—	—	●	—
SuperCab or SuperCrew ⁴	5.4L	XLT, LARIAT	4x2	P265/60R18 A/S OWL	—	●	○	—	○	○	—
SuperCab ⁵	4.6L	STX	4x2	P265/60R18 A/S OWL	—	●	○	—	○	○	—
SuperCab or SuperCrew ⁶	4.6L	XLT	4x2	P265/60R18 A/S OWL	—	●	○	—	○	○	—
SuperCab ⁵	4.6L	STX	4x4	P275/65R18 A/T OWL	—	●	○	—	○	○	—
SuperCab or SuperCrew ⁷	4.6L	XLT	4x4	P275/65R18 A/T OWL	—	—	●	—	—	○	—
SuperCab or SuperCrew ⁷	5.4L	XLT	4x4	P275/65R18 A/T OWL	—	●	○	—	○	○	—
All	5.4L	FX4	4x4	P275/65R18 A/T OWL	—	—	—	—	—	●	—
SuperCab or SuperCrew	5.4L	LARIAT	4x4	P275/65R18 A/T OWL	—	—	●	—	—	○	—
SuperCab or SuperCrew ⁸	5.4L	XLT	4x2	P275/55R20 A/T OWL	—	●	○	—	○	○	—
SuperCab or SuperCrew	5.4L	FX4	4x4	P275/55R20 A/T OWL	—	—	—	—	●	○	—
SuperCab or SuperCrew ⁹	5.4L	LARIAT	4x2/4x4	P275/55R20 A/T OWL	—	—	●	—	○	○	—
SuperCrew ¹⁰	5.4L	LARIAT	4x2/4x4	P275/45R22 A/S BSW V-Rated for H-D	—	—	—	—	—	●	—
Regular Cab or SuperCab	5.4L	Payload Pkg.	4x2/4x4	LT245/70R17D A/T BSW	—	—	—	●	—	—	○
Regular Cab or SuperCab ¹¹	4.6L/5.4L	XL, XLT	4x4	LT245/70R17D A/T BSW	—	●	○	—	○	○	—
SuperCrew ¹¹	4.6L	XLT	4x4	LT245/70R17D A/T BSW	—	—	●	—	—	○	—
SuperCrew ¹¹	5.4L	XLT	4x4	LT245/70R17D A/T BSW	—	●	○	—	○	○	—
All	5.4L	FX4	4x4	LT275/65R18C A/T OWL	—	—	—	—	—	●	—
SuperCab or SuperCrew	5.4L	LARIAT	4x4	LT275/65R18C A/T OWL	—	—	●	—	—	○	—

● Standard ● Select Availability ○ Optional — Not Available

²3.55 axle or higher required with automatic transmission. ³STX Special Edition Package only. ⁴Available on XLT only with XLT Chrome Package or FX2 SPORT Package. ⁵STX Wheels & Stripes Package only. ⁶XLT Chrome Package or FX2 SPORT Package only. ⁷XLT Chrome Package only. ⁸FX2 SPORT Package only. ⁹Optional with KING RANCH Package (3.55 axle n/a with KING RANCH). ¹⁰Ford Harley-Davidson™ F-150 and LIMITED Packages only. ¹¹Fleet only.

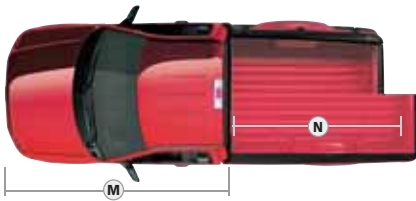
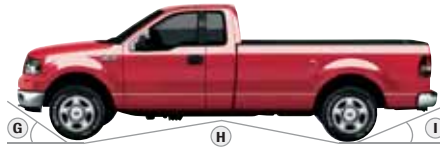
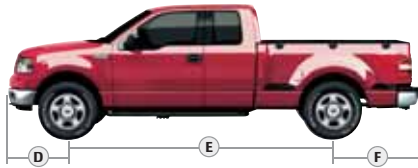
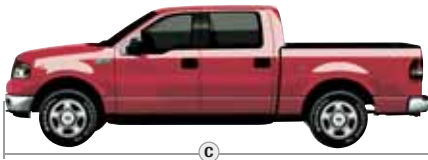
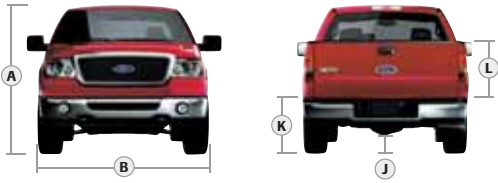
CONVENTIONAL TOWING¹² — Maximum Loaded Trailer Weight Ratings (lbs.)

ENGINE	AXLE RATIO	MAX. GCWR (LBS.)	REGULAR CAB 4x2		REGULAR CAB 4x4		SUPERCAB 4x2			SUPERCAB 4x4			SUPERCREW 4x2		SUPERCREW 4x4/AWD ¹³	
			126.0" WB	144.5" WB	126.0" WB	144.5" WB	132.5" WB	144.5" WB	163.0" WB	132.5" WB	144.5" WB	163.0" WB	138.5" WB	150.5" WB	138.5" WB	150.5" WB
4.2L EFI V6 Manual	3.31	7200	2400	2300	—	—	—	—	—	—	—	—	—	—	—	
	3.55	8500	3700	3600	—	—	—	—	—	—	—	—	—	—	—	
4.2L EFI V6 Automatic	3.55	10,000	5200	5100	—	—	—	—	—	—	—	—	—	—	—	
	3.73	10,500	5700	5600	—	—	—	—	—	—	—	—	—	—	—	
4.6L Triton V8 Automatic	3.55	11,500	6600	—	6300	—	6400	—	—	6100	—	—	—	—	—	
		11,700	—	6700	—	6400	—	—	6500	—	6200	—	6400	6300	—	—
	3.73	12,000	7100	—	6800	—	6900	—	—	6600	—	—	—	—	—	—
		12,200	—	7200	—	6900	—	—	7000	—	6700	—	6900	6800	6600	6600
5.4L 3-Valve Triton V8 Automatic	3.55	13,000	8000	—	7700	—	7700	—	—	7400	—	—	—	—	—	
		14,000	—	8900	—	8600	—	—	8700	—	8400	—	8600	8500	8300	8200
	3.73	13,500	8500	—	8200	—	8200	—	—	7900	—	—	—	—	—	—
		11,000 ¹³	—	—	—	—	—	—	—	—	—	—	5300	—	5100	—
		15,000	—	9800	—	9500	—	—	9500	—	9400	—	9500	9500	9300	9200
		4.10	15,300	—	—	—	9500 ¹⁴	—	—	9500 ¹⁴	—	9300 ¹⁴	—	—	—	—
	15,800	—	10,400 ¹⁴	—	—	—	—	—	—	—	—	—	—	—	—	—
	16,400	—	11,000 ¹⁵	—	—	—	—	—	—	—	—	—	—	—	—	—

¹²Reduce GCWR/maximum trailer weight by 500 lbs. on models with optional 18" or 20" wheels. ¹³Ford Harley-Davidson™ F-150 and LIMITED Packages only. ¹⁴Requires Heavy-Duty Payload Package. ¹⁵Requires Trailer Tow Package and Heavy-Duty Payload Package.

Note: Maximum loaded trailer weights shown. The combined weight of the towing vehicle (including hitch, passengers and cargo) and the loaded trailer must not exceed the Gross Combination Weight Rating (GCWR). **Note:** See RV & Trailer Towing Guide for requirements, restrictions and 5th-wheel towing.

DIMENSIONS

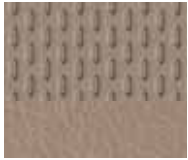


	REGULAR CAB 4x2/4x4 STYLESIDE	SUPERCAB 4x2/4x4 STYLESIDE	SUPERCREW 4x2/4x4 STYLESIDE
EXTERIOR			
A. Overall height			
5.5' box	—	74.0"/76.5"	73.5"/76.0"
6.5' box	73.7"/75.6"	73.5"/75.6"	73.5"/76.0"
8' box	73.8"/75.6"	73.4"/75.4"	—
B. Overall width (excl. mirrors)	78.9"	78.9"	78.9"
C. Overall length			
5.5' box	—	217.8"	223.8"
6.5' box	211.2"	229.8"	235.8"
8' box	229.8"	248.4"	—
D. Overhang — Front	36.9"	36.9"	36.9"
E. Wheelbase			
5.5' box	—	132.5"	138.5"
6.5' box	126.0"	144.5"	150.5"
8' box	144.5"	163.0"	—
F. Overhang — Rear	48.4"	48.4"	48.4"
G. Angle of approach (SWB)	19.5°/24.0°	20.5°/27.0°	19.5°/25.0°
H. Ramp breakover angle (SWB)	20.1°/22.0°	18.9°/21.1°	17.7°/21.2°
I. Angle of departure (SWB)	23.3°/26.0°	23.1°/25.4°	22.4°/25.2°
J. Ground clearance (rear axle)	8.3"/8.7"	8.3"/8.6"	8.2"/8.1"
K. Loadfloor height (open tailgate to ground, empty)			
5.5' box	—	33.0"/35.1"	32.4"/34.8"
6.5' box	33.1"/35.6"	32.6"/34.9"	32.4"/34.8"
8' box	33.5"/35.9"	33.5"/35.4"	—
L. Cargo box height with moldings	22.3"	22.3"	22.3"
M. Cab length	124.9"	143.5"	149.3"
INTERIOR			
1st Row			
Head room	40.9"	40.9"	40.1"
Shoulder room	66.5"	66.5"	65.8"
Hip room	65.4"	65.8"	63.8"
Leg room	41.3"	41.3"	41.3"
2nd Row			
Head room	—	39.6"	39.6"
Shoulder room	—	66.7"	65.8"
Hip room	—	66.5"	63.1"
Leg room	—	32.7"	39.0"

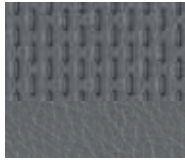
SWB = Short Wheelbase

CARGO AREA	5.5' STYLESIDE BOX	6.5' STYLESIDE BOX	6.5' FLARESIDE BOX	8' STYLESIDE BOX
Volume (cu. ft.)	55.5	65.5	59.1	81.3
N. Length at floor	67.0"	78.8"	78.8"	97.4"
O. Width at wheelhouse	50.0"	50.0"	50.0"	50.0"
P. Maximum width inside box	65.2"	65.2"	59.3"	65.2"

INTERIORS



Tan Vinyl



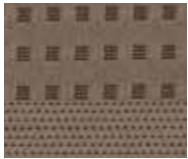
Medium Flint Vinyl



Tan Cloth



Medium Flint Cloth



Tan Premium Cloth



Medium Flint Premium Cloth



Medium Flint/Dark Flint Two-Tone Premium Cloth



Black/Red Sport Cloth



Black/Medium Flint Sport Cloth



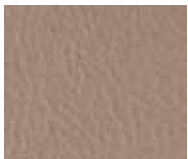
Black Sport Cloth



Medium Flint Sport Leather



Black Sport Leather



Tan Leather



Black Leather



Black/Dusted Copper Leather



Castaño Leather

TAN	
MEDIUM FLINT	
MEDIUM FLINT/DARK FLINT TWO-TONE	
BLACK	
XL	
● ●	Oxford White
● ●	Pueblo Gold Metallic
● ●	Bright Red
● ●	Redfire Metallic
● ●	Forest Green Metallic
● ●	Dark Blue Pearl Metallic
● ●	Silver Metallic
● ●	Dark Shadow Grey Metallic
● ●	Black
STX	
●	Oxford White
●	Bright Red
●	Dark Blue Pearl Metallic
●	Silver Metallic
●	Dark Shadow Grey Metallic
●	Black
STX WHEELS & STRIPES PACKAGE	
●	Bright Red
●	Dark Blue Pearl Metallic
●	Dark Shadow Grey Metallic
●	Black
XLT	
● ● ●	Oxford White
● ●	Oxford White/Pueblo Gold Metallic
● ●	Pueblo Gold Metallic
● ● ●	Bright Red
● ● ●	Bright Red/Pueblo Gold Metallic
● ● ●	Bright Red/Silver Metallic
● ● ●	Redfire Metallic
● ● ●	Redfire Metallic/Pueblo Gold Metallic
● ● ●	Redfire Metallic/Silver Metallic
● ● ●	Forest Green Metallic
● ● ●	Forest Green Metallic/Pueblo Gold Metallic
● ● ●	Forest Green Metallic/Silver Metallic
● ● ●	Dark Blue Pearl Metallic
● ● ●	Dark Blue Pearl Metallic/Silver Metallic
● ● ●	Silver Metallic
● ● ●	Dark Shadow Grey Metallic
● ● ●	Dark Shadow Grey Metallic/Silver Metallic
● ● ●	Stone Green Metallic ¹
● ● ●	Black
● ● ●	Black/Pueblo Gold Metallic
● ● ●	Black/Silver Metallic
FX2 SPORT PACKAGE	
●	Oxford White
●	Bright Red
●	Redfire Metallic (Styleside only)
●	Dark Shadow Grey Metallic
●	Black

¹New for 2008.

TAN	
MEDIUM FLINT	
MEDIUM FLINT/DARK FLINT TWO-TONE	
BLACK	
BLACK/MEDIUM FLINT	
FX4	
● ●	Oxford White
● ●	Oxford White/Dark Shadow Grey Metallic
● ●	Bright Red
● ●	Bright Red/Dark Shadow Grey Metallic
● ●	Dark Blue Pearl Metallic
● ●	Dark Blue Pearl Metallic/Dark Shadow Grey Metallic
● ●	Silver Metallic
● ●	Silver Metallic/Dark Shadow Grey Metallic
● ●	Dark Shadow Grey Metallic
● ●	Black
● ●	Black/Dark Shadow Grey Metallic
LARIAT	
● ●	Oxford White
● ●	Oxford White/Pueblo Gold Metallic
● ●	Bright Red/Pueblo Gold Metallic
● ●	Redfire Metallic
● ●	Redfire Metallic/Pueblo Gold Metallic
● ●	Forest Green Metallic
● ●	Forest Green Metallic/Pueblo Gold Metallic
● ●	Dark Blue Pearl Metallic/Pueblo Gold Metallic
● ●	Stone Green Metallic ¹
● ●	Stone Green Metallic ¹ /Pueblo Gold Metallic
● ●	Black
● ●	Black/Pueblo Gold Metallic
● ●	White Sand Tri-Coat Metallic
KING RANCH [®]	
● ●	Oxford White/Pueblo Gold Metallic
● ●	Forest Green Metallic/Pueblo Gold Metallic
● ●	Stone Green Metallic ¹ /Pueblo Gold Metallic
● ●	Mahogany Metallic ¹ /Pueblo Gold Metallic
● ●	Black/Pueblo Gold Metallic
FORD HARLEY-DAVIDSON™	
● ●	Black
● ●	Black/Vintage Copper Metallic ¹
LIMITED	
● ●	White Sand Tri-Coat Metallic

MEDIUM FLINT/BLACK

60TH ANNIVERSARY EDITION

● ●	Dark Shadow Grey Metallic/Black
● ●	Black/Dark Shadow Grey Metallic

EXTERIORS



Oxford White



Pueblo Gold Metallic



Bright Red



Redfire Metallic



Forest Green Metallic



Dark Blue Pearl Metallic



Silver Metallic



Dark Shadow Grey Metallic



Stone Green Metallic



Black



Mahogany/Pueblo Gold Metallic¹



White Sand Tri-Coat Metallic²



Black/Vintage Copper Metallic³

Ford uses clearcoat paint for beauty and protection. Colors shown are representative only. Not all colors are available on all models. See your dealer for actual paint/trim options. Vehicles shown with optional equipment. F-150 XLT SuperCrew 4x4 shown. ¹KING RANCH only. ²LARIAT only. ³Ford Harley-Davidson™ F-150 Package option only.



New Vehicle Limited Warranty

We want your Ford F-150 ownership experience to be the best it can be. So under this warranty, your new vehicle comes with 3-year/36,000-mile Bumper-to-Bumper Coverage, 5-year/60,000-mile Powertrain Warranty Coverage, 5-year/50,000-mile Safety Restraint Coverage, and 5-year/unlimited-mile Corrosion (Perforation) Coverage — all with no deductible. Please ask your Ford Dealer for a copy of this limited warranty.

For more assurance: The 5-year/60,000-mile powertrain limited warranty is fully transferable, has no deductible, and provides you with an additional 2 years or 24,000 miles of coverage — on select components including the engine and transmission — beyond the standard 3-year/36,000-mile Bumper-to-Bumper Coverage. Roadside Assistance is extended to 5 years or 60,000 miles, so you have the security of knowing that help may be only a phone call away should you run out of fuel, lock yourself out of the vehicle, or need towing. Your Ford Dealer can provide complete details on all of these advantages.



Get the ride you want. Whether you plan to lease or finance, you'll find the choices that are right for you at Ford Credit. Ask your Ford Dealer for details or check us out at fordcredit.com.



Get Ford Motor Company quality in your auto insurance. Our program offers industry-leading benefits and competitive rates. Call 1-877-367-3847, or visit us at fordvip.com for a no-obligation quote. Insurance offered by American Road Services Company (in CA, American Road Insurance Agency), a licensed agency and subsidiary of Ford Motor Company.



For a purchase or lease, the Ford **Extended Service Plan (ESP)** gives you "Peace-of-Mind" protection designed to cover key vehicle components and protect you from the cost of unexpected repairs. Ask your dealer for an ESP, the only service contract backed exclusively by Ford and honored at all Ford Lincoln Mercury dealerships.



Genuine Ford Accessories are designed and engineered specifically for Ford vehicles. Visit our website at fordaccessoriesstore.com to use the Accessorizer, and to learn about complete accessory details and purchase instructions.

©2007 Ford Motor Company
08F150WEBSPEC