

Coroa e Pinhão e Componentes de Diferencial

*Pick-ups e Comerciais Leves
Catálogo de Aplicações 2007*

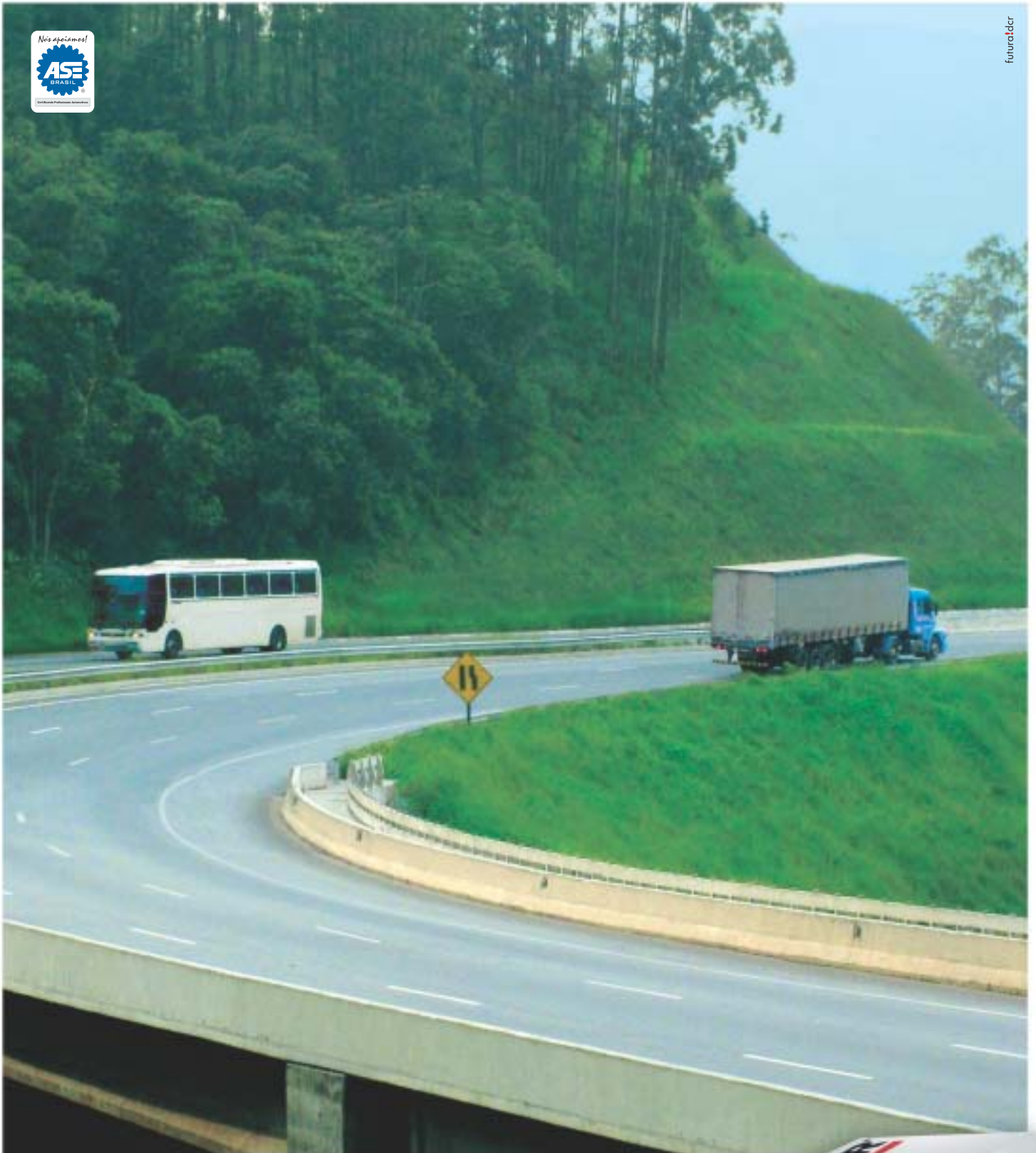
Coroa y Piñón y Partes de Diferencial

*Camionetas y Vehículos Comerciales
Catálogo de Aplicaciones*

Gear Sets & Rear Axle Parts

*Light Trucks & Commercial Vehicles
Application Catalog*





www.spicer.com.br • 0800 707 80 22

Você sabe quanto custa ficar parado? Exija Spicer.

Tempo é dinheiro. E para não deixar seu cliente correr o risco de ficar parado, o componente de transmissão tem que ser Spicer, a marca que é referência mundial em transmissão e a escolha das principais montadoras do mundo. Com Spicer você tem garantia de procedência e qualidade original, testada e aprovada. Quando o assunto é transmissão, não deixe seu cliente parado, exija Spicer.

SPICER

Componentes de Cardan



Como utilizar este catálogo

Como usar el catálogo

How to use this catalog



Neste catálogo você encontrará todas as aplicações da linha de **Coroa e Pinhão e Componentes de Diferencial SPICER**. O catálogo está dividido em três tabelas.

Aplicação por montadora e veículo: localizada a partir da página 6 apresenta todas as aplicações de **Coroa, Pinhão e Componentes de Diferencial**, divididas de acordo com a montadora do veículo.

Tabela de componentes: localizada na página 32, traz a composição de cada kit.

Tabela de equivalência: localizada a partir da página 35, mostra os códigos dos produtos que devem ser aplicados no lugar de modelos originais.

En este catálogo usted encontrará todas las aplicaciones de la línea de **Coroa y Piñón y Partes de Diferencial SPICER**. El catálogo está dividido en tres tablas.

Aplicación por marca y modelo: esta tabla presenta todas las aplicaciones de **Coroa, Piñón y Partes de Diferencial**, dividida de acuerdo con la ensambladora del vehículo.

Tabla de partes: trae la composición de cada kit.



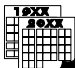

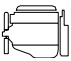

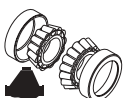




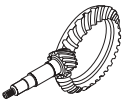
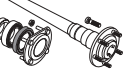

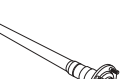


Cruce de referencias: esta tabla indica los códigos de intercambio con otras marcas de la competencia.

In this catalog, you will find all information about **SPICER Gear Sets & Rear Axle Parts**. This catalog is divided in three charts.

Application by make and model: this section presents all applications about **Gear Sets & Rear Axle Parts**, divided according to the car maker.

Parts chart: this section presents the composition of each kit.

Cross reference list: this section presents all carmaker cross reference part numbers.

	1		10	A estrutura das tabelas é similar, apresentando as seguintes informações: La estructura de las tablas es similar, presentando las siguientes informaciones: The structure from the tables is similar, presenting the following information:
	2		11	
	3		12	1- Veículo / Vehículo / Vehicle
4 x 2 4 x 4	4		13	2- Ano (Ano Inicial / Ano Final) Año (Año Inicial / Año Final) Year (Start Year / End Year)
	5		14	3- Motor / Motor / Engine
	6		15	4- Tração / Tracción / Traction
	7		16	5- ABS / ABS / ABS
	8		17	6- Modelo do Eixo Diferencial / Modelo de eje diferencial / Rear Axle model
	9			7- Kit de Coroa e Pinhão / Kit de corona y piñon/ Gear sets
				8- Caixa Diferencial Completa / Caja diferencial completa / Differential case assembly
				9- Caixa Diferencial Vazia / Caja de diferencia vacía / Differential case
				10- Reparo da Caixa do Diferencial / Kit de reparación / Differential case repair kit
				11- Kit de Calços / Kit de lainas / Shim kit
				12- Kit de Rolamento do Pinhão / Kit de cojinete de piñon / Pinion bearing kit
				13- Kit de Rolamento da Caixa do Diferencial / Kit de cojinete de caja diferencial / Differential bearing kit
				14- Kit de Reparo do Semi-Eixo / Kit de reparación de semi-eje / Axle shaft repair kit
				15- Kit do Semi-Eixo Completo / Kit de semi-eje complete / Axle shaft assembly
				16- Semi-Eixo / Semi-Eje / Axle shaft
				17- Terminal do Diferencial / Brida de diferencial / Differential end yoke

QUANDO VOCÊ ESCOLHE OS MEL LEVA TAMBÉM O MAIS COMP

Fazer parte do dia-a-dia do reparador brasileiro é uma grande responsabilidade. Só quem entende as necessidades desse profissional pode ir além, oferecendo não apenas os

Sites

Agora cada marca com a qual você trabalha tem um website exclusivo com todas as informações que você precisa. É só ir direto ao ponto.

Catálogos

Catálogos e manuais com as informações técnicas e tabelas que você utiliza no seu dia-a-dia.

PHD NAKATA

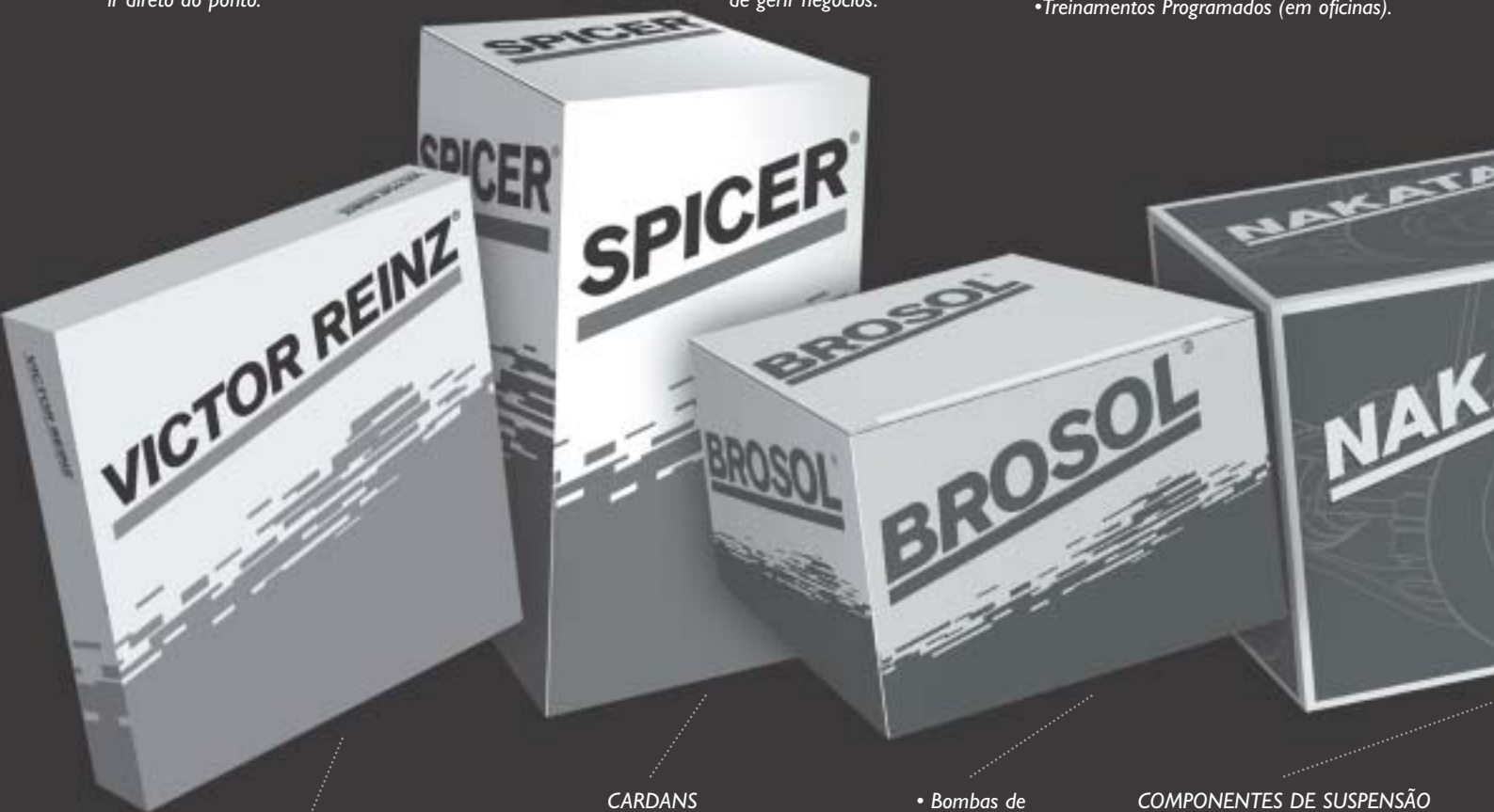
Parceria entre a Affinia e a Mercatus oferece a distribuidores e varejistas a oportunidade de aprimorar sua capacidade de gerir negócios.

CCTA

Centro de Capacitação Técnica Affinia

Uma série de treinamentos e iniciativas que valorizam o reparador brasileiro.

- Treinamentos no Centro de Treinamento Affinia.
- Palestras técnicas em todo o Brasil.
- Encontro de Mecânicos.
- Treinamentos Programados (em oficinas).



- Juntas para Motores sem Amianto • Juntas MLS • Jogos de Juntas para Motores Completos e Parciais

- CARDANS
- Eixos Cardans • Cruzetas
 - Cardans Agrícolas e Industriais
 - Componentes para Cardans Mancais
 - Colunas de direção

- DIFERENCIAIS
- Conjunto Coroa e Pinhão • Satélites
 - Componentes para Eixos Diferenciais
 - Rolamentos Planetárias

- HOMOCINÉTICAS
- Juntas Homocinéticas • Semi-eixos
 - Kits de Reparo

- Bombas de Combustível Elétrica e Mecânica • Bomba de Óleo • Carburadores
- Kits de Reparo para Carburadores

- COMPONENTES DE SUSPENSÃO
- Pivôs • Tirantes • Barras de Reação
 - Amortecedores • Kits de Reparo para Amortecedores
 - Molas Helicoidais
 - Molas a Gás • Bandejas

HORES PRODUTOS DO MERCADO, LETO PACOTE DE SERVIÇOS.

melhores produtos do mercado, mas também um pacote completo de serviços. Fique por dentro de tudo que preparamos para facilitar a sua vida e aproveite todas as vantagens.

Newsletter

Um informativo que está dando o que falar. Você vai ficar sempre por dentro de tudo o que está acontecendo no mercado automotivo.

SAC

Um canal aberto de comunicação feito especialmente para você.

Equipe de Promotores

24 Promotores em todo o Brasil para rápido atendimento.

Assistência Técnica

Profissionais especializados, sempre preparados para atender você e acabar com todas as suas dúvidas.

Equipe de garantia para atendimento em campo

Agilidade e flexibilidade para resolver eventuais imprevistos.



COMPONENTES DE DIREÇÃO

- Barras de Direção • Terminais de Direção • Braços Pitman
- Braços Auxiliares
- Caixas de Direção

FREIOS

- Pastilhas • Discos de Freio • Cubos de Roda • Tambores • Lonas Leves
- Cilindros Mestre • Cilindros de Roda • Cilindros de Embreagem
- Servofreios

FILTROS

- Filtros de Ar • Filtros de Óleo
- Filtros de Combustível

- Bombas d'água
- Kits de Reparo para Bombas d'água

- Anéis de Pistão • Bronzinas



AFFINIA

Aplicação por Montadora e Veículo / Eixos Diferenciais

Aplicación por Marca y Modelo / Ejes Diferenciales

Application by Make and Model / Differential Axles



AGRALE

4500	01/94	12/97	MWM D229-4	4x2	BRASEIXOS	407	OT	3,73 (41x11)	BA402069-X	BA402039-X
	01/94	12/97	MWM D229-4	4x2	BRASEIXOS	407	OT	3,73 (41x11)	BA402069-X	BA402039-X
5000	01/94	12/98	MWM D229-4	4x2	BRASEIXOS	407	OT	3,73 (41x11)	BA402069-X	BA402039-X
5010	01/93	12/00			BRASEIXOS	408	OT	3,90 (39x10)	BA402070-X	BA402041-X
	01/93	12/00			BRASEIXOS	408	OT	3,90 (39x10)	BA402070-X	BA402041-X
5010	01/93	12/00			BRASEIXOS	408	OT	4,10 (41x10)	BA402071-X	BA402041-X
	01/93	12/00			BRASEIXOS	408	OT	4,10 (41x10)	BA402071-X	BA402041-X
5010	01/93	12/00			BRASEIXOS	411	OT	3,90 (39x10)	BA402070-X	BA402041-X
	01/93	12/00			BRASEIXOS	411	OT	3,90 (39x10)	BA402070-X	BA402041-X
5010	01/93	12/00			BRASEIXOS	411	OT	4,10 (41x10)	BA402071-X	BA402041-X
	01/93	12/00			BRASEIXOS	411	OT	4,10 (41x10)	BA402071-X	BA402041-X
6000	01/01	12/05	MWM Sprint 4.07 TCA	4x2	DANA	284	OT	3,90 (39x10)	BA402070-X	BA202936-2
6000	01/01	12/05	MWM Sprint 4.07 TCA	4x2	DANA	284	OT	4,10 (41x10)	BA402071-X	BA202936-2
6000	01/01	12/05	MWM Sprint 4.07 TCA	4x2	DANA	284	OT	4,63 (37x8)	BA402104-X	BA202936-1
6000	01/01	12/05	MWM Sprint 4.07 TCA	4x2	DANA	284	OT	5,38 (43x8)	BA402073-X	BA202936-1
7000	01/89	12/97	MWM 4.10	4x2	DANA	70HD	OT	4,56 (41x9)	BA401092-X	BA202061
7000	01/89	12/00	MWM D229NA	4x2	DANA	70HD	OT	4,10 (41x10)	BA401237-X	BA202054
7000	01/93	12/00	MWM 4.10 TCA	4x2	BRASEIXOS	411	OT	3,55 (39x11)		BA402041-X
	01/93	12/00	MWM 4.10 TCA	4x2	BRASEIXOS	411	OT	3,55 (39x11)		BA402041-X
7000	01/93	12/00	MWM 4.10 TCA	4x2	BRASEIXOS	411	OT	4,63 (37x8)	BA402104-X	BA402042-X
	01/93	12/00	MWM 4.10 TCA	4x2	BRASEIXOS	411	OT	4,63 (37x8)	BA402104-X	BA402042-X
7000	01/93	12/00	MWM 4.10 TCA	4x2	BRASEIXOS	411	OT	5,38 (43x8)	BA402073-X	BA402042-X
	01/93	12/00	MWM 4.10 TCA	4x2	BRASEIXOS	411	OT	5,38 (43x8)	BA402073-X	BA402042-X
7500	01/94	12/00	MWM 4.10 TCA	4x2	BRASEIXOS	411	OT	3,55 (39x11)		BA402041-X
	01/94	12/00	MWM 4.10 TCA	4x2	BRASEIXOS	411	OT	3,55 (39x11)		BA402041-X
7500	01/94	12/00	MWM 4.10 TCA	4x2	BRASEIXOS	411	OT	4,63 (37x8)	BA402104-X	BA402042-X
	01/94	12/00	MWM 4.10 TCA	4x2	BRASEIXOS	411	OT	4,63 (37x8)	BA402104-X	BA402042-X
7500	01/94	12/00	MWM 4.10 TCA	4x2	BRASEIXOS	411	OT	5,38 (43x8)	BA402073-X	BA402042-X
	01/94	12/00	MWM 4.10 TCA	4x2	BRASEIXOS	411	OT	5,38 (43x8)	BA402073-X	BA402042-X
7500	01/01	12/02	MWM 4.10 TCA	4x2	DANA	284	OT	3,90 (39x10)	BA402070-X	BA202936-2
7500	01/01	12/02	MWM 4.10 TCA	4x2	DANA	284	OT	4,10 (41x10)	BA402071-X	BA202936-2
7500	01/01	12/02	MWM 4.10 TCA	4x2	DANA	284	OT	4,63 (37x8)	BA402104-X	BA202936-1
7500	01/01	12/02	MWM 4.10 TCA	4x2	DANA	284	OT	5,38 (43x8)	BA402073-X	BA202936-1



024971	BA402029-X	BA402005-X		BA402079-X		101326 Rodado Simples	070261
024971	BA402030-X	BA402005-X		BA402079-X		101461 Rodado Duplo	070261
024971	BA402029-X	BA402005-X		BA402079-X		101326	070261
024443 ø 25,35mm	BA402031-X ø 25,35mm	BA402006-X		BA402092-X		101461	070462
024206 ø 28,56mm		BA402006-X		BA402092-X		101461	070462
024443 ø 25,35mm	BA402031-X ø 25,35mm	BA402006-X		BA402092-X		101461	070462
024206 ø 28,56mm		BA402006-X		BA402092-X		101461	070462
024443 ø 25,35mm	BA402031-X ø 25,35mm	BA402006-X	BA401377-X	BA402092-X		101847	070462
024206 ø 28,56mm		BA402006-X	BA401377-X	BA402092-X		101847	070462
024443 ø 25,35mm	BA402031-X ø 25,35mm	BA402006-X	BA401377-X	BA402092-X		101847	070462
024206 ø 28,56mm		BA402006-X	BA401377-X	BA402092-X		101847	070462
BA203169-2	BA401295-X	BA402006-X	BA401377-X	BA402092-X		101847-3	070462
BA203169-2	BA401295-X	BA402006-X	BA401377-X	BA402092-X		101847-3	070462
BA203169-1	BA401295-X	BA402006-X	BA401377-X	BA402092-X		101847-3	070462
BA203169-1	BA401295-X	BA402006-X	BA401377-X	BA402092-X		101847-3	070462
BA201868	BA401227-X	BA401225-X	BA401223-X	BA401197-X		BA202449	72586-X
BA201870	BA401227-X	BA401225-X	BA401223-X	BA401197-X		BA202449	72586-X
024443 ø 25,35mm	BA402031-X ø 25,35mm	BA402006-X	BA401377-X	BA402092-X		101847	070462
024206 ø 28,56mm		BA402006-X	BA401377-X	BA402092-X		101847	070462
024436 ø 25,35mm	BA402031-X ø 25,35mm	BA402006-X	BA401377-X	BA402092-X		101847	070462
024208 ø 28,56mm		BA402006-X	BA401377-X	BA402092-X		101847	070462
024436 ø 25,35mm	BA402031-X ø 25,35mm	BA402006-X	BA401377-X	BA402092-X		101847	070462
024208 ø 28,56mm		BA402006-X	BA401377-X	BA402092-X		101847	070462
024436 ø 25,35mm	BA402031-X ø 25,35mm	BA402006-X	BA401377-X	BA402092-X		101847	070462
024208 ø 28,56mm		BA402006-X	BA401377-X	BA402092-X		101847	070462
024208 ø 28,56mm		BA402006-X	BA401377-X	BA402092-X		101847	070462
024436 ø 25,35mm	BA402031-X ø 25,35mm	BA402006-X	BA401377-X	BA402092-X		101847	070462
024208 ø 28,56mm		BA402006-X	BA401377-X	BA402092-X		101847	070462
BA203169-2	BA401295-X	BA402006-X	BA401377-X	BA402092-X		101847-3	070580
BA203169-2	BA401295-X	BA402006-X	BA401377-X	BA402092-X		101847-3	070580
BA203169-1	BA401295-X	BA402006-X	BA401377-X	BA402092-X		101847-3	070580
BA203169-1	BA401295-X	BA402006-X	BA401377-X	BA402092-X		101847-3	070580

Aplicação por Montadora e Veículo / Eixos Diferenciais

Aplicación por Marca y Modelo / Ejes Diferenciales

Application by Make and Model / Differential Axles



AGRALE

8500	01/97	12/00	MWM 4.10 TCA	4x2	DANA	80	OT	4,63 (37x8)	73167-1X	73165-X
8500	01/97	12/00	MWM 4.10 TCA	4x2	DANA	80	OT	5,13 (41x8)	73168-1X	73165-X
8500	01/01	12/02	MWM 4.10 TCA	4x2	DANA	284	OT	3,90 (39x10)	BA402070-X	BA202936-2
8500	01/01	12/02	MWM 4.10 TCA	4x2	DANA	284	OT	4,10 (41x10)	BA402071-X	BA202936-2
8500	01/01	12/02	MWM 4.10 TCA	4x2	DANA	284	OT	4,63 (37x8)	BA402104-X	BA202936-1
8500	01/01	12/02	MWM 4.10 TCA	4x2	DANA	284	OT	5,38 (43x8)	BA402073-X	BA202936-1
MA 7.5	01/01	12/05	MWM 4.10 TCA	4x2	DANA	284	OT	3,90 (39x10)	BA402070-X	BA202936-2
MA 7.5	01/01	12/05	MWM 4.10 TCA	4x2	DANA	284	OT	4,10 (41x10)	BA402071-X	BA202936-2
MA 7.5	01/01	12/05	MWM 4.10 TCA	4x2	DANA	284	OT	4,63 (37x8)	BA402104-X	BA202936-1
MA 7.5	01/01	12/05	MWM 4.10 TCA	4x2	DANA	284	OT	5,38 (43x8)	BA402073-X	BA202936-1
MA 8.5	01/97	12/00	MWM 4.10 TCA	4x2	DANA	80	OT	4,63 (37x8)	73167-1X	73165-X
MA 8.5	01/97	12/00	MWM 4.10 TCA	4x2	DANA	80	OT	5,13 (41x8)	73168-1X	73165-X
MA 8.5	01/01	12/05	MWM 4.10 TCA	4x2	DANA	284	OT	3,90 (39x10)	BA402070-X	BA202936-2
MA 8.5	01/01	12/05	MWM 4.10 TCA	4x2	DANA	284	OT	4,10 (41x10)	BA402071-X	BA202936-2
MA 8.5	01/01	12/05	MWM 4.10 TCA	4x2	DANA	284	OT	4,63 (37x8)	BA402104-X	BA202936-1
MA 8.5	01/01	12/05	MWM 4.10 TCA	4x2	DANA	284	OT	5,38 (43x8)	BA402073-X	BA202936-1
MA 8.5	01/02	12/05	Cummins B5.9 160	4x2	DANA	284	OT	3,90 (39x10)	BA402070-X	BA202936-2
MA 8.5	01/02	12/05	Cummins B5.9 160	4x2	DANA	284	OT	4,10 (41x10)	BA402071-X	BA202936-2
MA 8.5	01/02	12/05	Cummins B5.9 160	4x2	DANA	284	OT	4,63 (37x8)	BA402104-X	BA202936-1
MA 8.5	01/02	12/05	Cummins B5.9 160	4x2	DANA	284	OT	5,38 (43x8)	BA402073-X	BA202936-1
TX1600	01/86	12/94	MWM D229		BRASEIXOS	407	OT	3,73 (41x11)	BA402069-X	BA402039-X
	01/86	12/94	MWM D229		BRASEIXOS	407	OT	3,73 (41x11)	BA402069-X	BA402039-X
TX1600	01/86	12/94	MWM D229		DANA	60	OT	3,73 (41x11)	BA401062-X	26188-X
	01/86	12/94	MWM D229		DANA	60	OT	3,73 (41x11)	BA401062-X	26188-X
TX1800	01/88	12/96	MWM D229-4	4x2	BRASEIXOS	407	OT	3,73 (41x11)	BA402069-X	BA402039-X
	01/88	12/96	MWM D229-4	4x2	BRASEIXOS	407	OT	3,73 (41x11)	BA402069-X	BA402039-X
TX1800	01/88	12/96	MWM D229-4	4x2	DANA	60	OT	3,73 (41x11)	BA401062-X	26188-X
	01/88	12/96	MWM D229-4	4x2	DANA	60	OT	3,73 (41x11)	BA401062-X	26188-X

ALFA METAIS

PUMA	01/95	10/98	MWM 4.10 NA	4x2	DANA	80	OT	4,63 (37x8)	73167-1X	73165-X
------	-------	-------	-------------	-----	------	----	----	-------------	----------	---------

FORD

814 Cargo	01/96	12/01	Cummins 4BT	4x2	DANA	80	OT	4,63 (37x8)	73167-1X	73165-X
815 Cargo	01/00	12/05	Cummins 4BT	4x2	DANA	80	OT	4,63 (37x8)	73167-1X	73165-X
F 100	01/71	12/83	2.3		DANA	44	OT	4,89 (44x9)		
F 100	01/78	12/83	2.3		DANA	44	TL	4,89 (44x9)		
F 100	01/78	12/83	2.3		DANA	44	TL	5,38 (43x8)		



42409	BA401202-X	BA401201-X	BA401163-X	BA401197-X	BA202449	BA202498
42409	BA401202-X	BA401201-X	BA401163-X	BA401197-X	BA202449	BA202498
BA203169-2	BA401295-X	BA402006-X	BA401377-X	BA402092-X	101847-2	070580
BA203169-2	BA401295-X	BA402006-X	BA401377-X	BA402092-X	101847-2	070580
BA203169-1	BA401295-X	BA402006-X	BA401377-X	BA402092-X	101847-2	070580
BA203169-1	BA401295-X	BA402006-X	BA401377-X	BA402092-X	101847-2	070580
BA203169-2	BA401295-X	BA402006-X	BA401377-X	BA402092-X	101847-2	070580
BA203169-2	BA401295-X	BA402006-X	BA401377-X	BA402092-X	101847-2	070580
BA203169-1	BA401295-X	BA402006-X	BA401377-X	BA402092-X	101847-2	070580
BA203169-1	BA401295-X	BA402006-X	BA401377-X	BA402092-X	101847-2	070580
42409	BA401202-X	BA401201-X	BA401163-X	BA401197-X	BA202449	BA202498
42409	BA401202-X	BA401201-X	BA401163-X	BA401197-X	BA202449	BA202498
BA203169-2	BA401295-X	BA402006-X	BA401377-X	BA402092-X	101847-2	070580
BA203169-2	BA401295-X	BA402006-X	BA401377-X	BA402092-X	101847-2	070580
BA203169-1	BA401295-X	BA402006-X	BA401377-X	BA402092-X	101847-2	070580
BA203169-1	BA401295-X	BA402006-X	BA401377-X	BA402092-X	101847-2	070580
BA203169-2	BA401295-X	BA402006-X	BA401377-X	BA402092-X	101847-3	070580
BA203169-2	BA401295-X	BA402006-X	BA401377-X	BA402092-X	101847-3	070580
BA203169-1	BA401295-X	BA402006-X	BA401377-X	BA402092-X	101847-3	070580
BA203169-1	BA401295-X	BA402006-X	BA401377-X	BA402092-X	101847-3	070580
024971	BA402029-X	BA402005-X		BA402079-X	101461 Rodado Duplo	070261
024971	BA402029-X	BA402005-X		BA402079-X	101326 Rodado Simples	070261
30357	706043-X	BA401077-X	BA401223-X	706047-X		73867-X Série 1310
30357	706043-X	BA401077-X	BA401223-X	706047-X		72586-X Série 1410
024971	BA402029-X	BA402005-X		BA402079-X	101461 Rodado Duplo	070261
024971	BA402029-X	BA402005-X		BA402079-X	101326 Rodado Simples	070261
30357	706043-X	BA401077-X	BA401223-X	706047-X		73867-X Série 1310
30357	706043-X	BA401077-X	BA401223-X	706047-X		72586-X Série 1410
42409	BA401202-X	BA401201-X	BA401163-X	BA401197-X		BA202497
42409	BA401202-X	BA401201-X	BA401163-X	BA401197-X	BA202449	BA202498
42409	BA401202-X	BA401201-X	BA401163-X	BA401197-X	BA202449	BA202498
	BA401010-X	BA401098-X				BA201385-X
	BA401034-X	BA401098-X				BA201385-X
	BA401034-X	BA401098-X				BA201385-X

Aplicação por Montadora e Veículo / Eixos Diferenciais

Aplicación por Marca y Modelo / Ejes Diferenciales

Application by Make and Model / Differential Axles



FORD

F 1000	01/79	12/90	DANA	44	OT	3,07 (43x14)		BA202934 Alternativa
	01/79	12/90	DANA	44	OT	3,07 (43x14)		
F 1000	01/79	12/90	DANA	44	OT	3,31 (43x13)		
	01/79	12/90	DANA	44	OT	3,31 (43x13)	23592-1X	BA202934 Alternativa
F 1000	01/79	12/90	DANA	44	OT	3,54 (46x13)	22856-1X	
	01/79	12/90	DANA	44	OT	3,54 (46x13)	22856-1X	BA202934 Alternativa
F 1000	01/79	12/90	DANA	44	TL	3,07 (43x14)		
	01/79	12/90	DANA	44	TL	3,07 (43x14)		BA202835 Alternativa
F 1000	01/79	12/90	DANA	44	TL	3,31 (43x13)	23592-1X	BA202835 Alternativa
	01/79	12/90	DANA	44	TL	3,31 (43x13)	23592-1X	
F 1000	01/79	12/90	DANA	44	TL	3,54 (46x13)	22856-1X	
	01/79	12/90	DANA	44	TL	3,54 (46x13)	22856-1X	BA202835 Alternativa
F 1000	01/85	12/92	BRASEIXOS	405	DL	2,87 (43x15)		BA402036-X
	01/85	12/92	BRASEIXOS	405	DL	2,87 (43x15)		BA402036-X
F 1000	01/85	12/92	BRASEIXOS	405	DL	3,07 (43x14)	BA402062-X	BA402036-X
	01/85	12/92	BRASEIXOS	405	DL	3,07 (43x14)	BA402062-X	BA402036-X
F 1000	01/85	12/92	BRASEIXOS	405	DL	3,15 (41x13)	BA402060-X	BA402036-X
	01/85	12/92	BRASEIXOS	405	DL	3,15 (41x13)	BA402060-X	BA402036-X
F 1000	01/85	12/92	BRASEIXOS	405	DL	3,55 (39x11)	BA402059-X	BA402023-X
	01/85	12/92	BRASEIXOS	405	DL	3,55 (39x11)	BA402059-X	BA402023-X
F 1000	01/85	12/92	BRASEIXOS	405	DL	3,91 (43x11)	BA402058-X	BA402023-X
	01/85	12/92	BRASEIXOS	405	DL	3,91 (43x11)	BA402058-X	BA402023-X
F 1000	01/85	12/92	BRASEIXOS	405	DL	4,10 (41x10)	BA402061-X	BA402023-X
	01/85	12/92	BRASEIXOS	405	DL	4,10 (41x10)	BA402061-X	BA402023-X
F 1000	01/85	12/92	BRASEIXOS	405	DL	4,56 (41x9)		BA402023-X
	01/85	12/92	BRASEIXOS	405	DL	4,56 (41x9)		BA402023-X
F 1000	01/85	12/92	BRASEIXOS	405	DL	4,78 (43x9)		BA402023-X
	01/85	12/92	BRASEIXOS	405	DL	4,78 (43x9)		BA402023-X
F 1000	01/85	12/92	BRASEIXOS	405	OT	2,87 (43x15)		BA402035-X
	01/85	12/92	BRASEIXOS	405	OT	2,87 (43x15)		BA402035-X
F 1000	01/85	12/92	BRASEIXOS	405	OT	3,07 (43x14)	BA402062-X	BA402035-X
	01/85	12/92	BRASEIXOS	405	OT	3,07 (43x14)	BA402062-X	BA402035-X
F 1000	01/85	12/92	BRASEIXOS	405	OT	3,15 (41x13)	BA402060-X	BA402035-X
	01/85	12/92	BRASEIXOS	405	OT	3,15 (41x13)	BA402060-X	BA402035-X
F 1000	01/85	12/92	BRASEIXOS	405	OT	3,55 (39x11)	BA402059-X	BA402032-X
	01/85	12/92	BRASEIXOS	405	OT	3,55 (39x11)	BA402059-X	BA402032-X



BA203254 Alternativa	BA401178-X Alternativa BA401219-X	BA401215-X Alternativa BA401098-X	BA401214-X BA401214-X	706032-X 706032-X		BA201385-X BA201385-X
BA203254 Alternativa	BA401219-X BA401178-X Alternativa	BA401098-X BA401215-X Alternativa	BA401214-X	706032-X		BA201385-X
BA203254 Alternativa	BA401219-X BA401178-X Alternativa	BA401098-X BA401215-X Alternativa	BA401214-X	706032-X		BA201385-X BA201385-X
BA203424 Alternativa	BA401103-X BA401186-X Alternativa	BA401098-X BA401215-X Alternativa	BA401214-X	706032-X		BA201385-X BA201385-X
BA203424 Alternativa	BA401186-X Alternativa BA401103-X	BA401215-X Alternativa BA401098-X	BA401214-X	706032-X		BA201385-X BA201385-X
BA203424 Alternativa	BA401103-X BA401186-X Alternativa	BA401098-X BA401215-X Alternativa	BA401214-X	706032-X		BA201385-X BA201385-X
			BA401196-X BA401196-X	BA402079-X BA402079-X	101424 101424	070530 U-Bolt 070572 Bearing Strap
			BA401196-X	BA402079-X	101424	070572 Bearing Strap
			BA401196-X	BA402079-X	101424	070530 U-Bolt
			BA401196-X	BA402079-X	101424	070572 Bearing Strap
			BA401196-X	BA402079-X	101424	070530 U-Bolt
			BA401196-X	BA402079-X	101424	070572 Bearing Strap
			BA401196-X	BA402079-X	101424	070530 U-Bolt
			BA401196-X	BA402079-X	101424	070572 Bearing Strap
			BA401196-X	BA402079-X	101424	070530 U-Bolt
			BA401196-X	BA402079-X	101424	070572 Bearing Strap
024943	BA402028-X		BA401196-X	BA402079-X	101424	070572 Bearing Strap
024943	BA402028-X		BA401196-X	BA402079-X	101424	070530 U-Bolt
024943	BA402028-X		BA401196-X	BA402079-X	101424	070572 Bearing Strap
024943	BA402028-X		BA401196-X	BA402079-X	101424	070530 U-Bolt
024943	BA402028-X		BA401196-X	BA402079-X	101424	070572 Bearing Strap
024944	BA402028-X		BA401196-X	BA402079-X	101424	070530 U-Bolt
024944	BA402028-X		BA401196-X	BA402079-X	101424	070572 Bearing Strap

Aplicação por Montadora e Veículo / Eixos Diferenciais

Aplicación por Marca y Modelo / Ejes Diferenciales

Application by Make and Model / Differential Axles



FORD

F 1000	01/85	12/92			BRASEIXOS	405	OT	3,91 (43x11)	BA402058-X	BA402032-X
	01/85	12/92			BRASEIXOS	405	OT	3,91 (43x11)	BA402058-X	BA402032-X
F 1000	01/85	12/92			BRASEIXOS	405	OT	4,10 (41x10)	BA402061-X	BA402032-X
	01/85	12/92			BRASEIXOS	405	OT	4,10 (41x10)	BA402061-X	BA402032-X
F 1000	01/85	12/92			BRASEIXOS	405	OT	4,56 (41x9)		BA402032-X
	01/85	12/92			BRASEIXOS	405	OT	4,56 (41x9)		BA402032-X
F 1000	01/85	12/92			BRASEIXOS	405	OT	4,78 (43x9)		BA402032-X
	01/85	12/92			BRASEIXOS	405	OT	4,78 (43x9)		BA402032-X
F 1000	01/85	12/96	Turbo	4x2	BRASEIXOS	406	DL	2,53 (43x17)		
F 1000	01/85	12/96	Turbo	4x2	BRASEIXOS	406	DL	3,07 (43x14)	BA402066-X	
F 1000	01/85	12/96	Turbo	4x2	BRASEIXOS	406	DL	3,58 (43x12)		
F 1000	01/85	12/96	Turbo	4x2	BRASEIXOS	406	OT	2,53 (43x17)		
F 1000	01/85	12/96	Turbo	4x2	BRASEIXOS	406	OT	3,07 (43x14)	BA402066-X	
F 1000	01/85	12/96	Turbo	4x2	BRASEIXOS	406	OT	3,58 (43x12)		
F 1000	01/91	12/98	3.6	4x2	DANA	46	OT	4,56 (41x9)	BA401155-1X	74176-X
F 1000	01/91	12/98	3.6	4x2	DANA	46	OT	4,78 (43x9)	BA401154-1X	74176-X
F 1000	01/91	12/98	3.6	4x2	DANA	46	TL	4,56 (41x9)	BA401155-1X	BA202310
F 1000	01/91	12/98	3.6	4x2	DANA	46	TL	4,78 (43x9)	BA401154-1X	BA202310
F 1000	01/91	12/98	3.6	4x2	DANA	46	TL	4,56 (41x9)	BA401155-1X	BA202645
F 1000	01/91	12/98	3.6	4x2	DANA	46	TL	4,78 (43x9)	BA401154-1X	BA202645
F 1000	01/91	12/98	Maxion	4x2	DANA	46	OT	4,27 (47x11)	BA401156-1X	74176-X
F 1000	01/91	12/98	Maxion	4x2	DANA	46	TL	4,27 (47x11)	BA401156-1X	BA202310
F 1000	01/91	12/98	Maxion	4x2	DANA	46	TL	4,27 (47x11)	BA401156-1X	BA202645
F 1000	01/91	12/98	MWM D229A	4x2	DANA	46	OT	4,09 (45x11)	BA401153-1X	74176-X
F 1000	01/91	12/98	MWM D229A	4x2	DANA	46	TL	3,15 (41x13)	74172-1X	BA401205-X
F 1000	01/91	12/98	MWM D229A	4x2	DANA	46	TL	4,09 (45x11)	BA401153-1X	BA202310
F 1000	01/91	12/98	MWM D229A	4x4	DANA	46	OT	3,07 (43x14)	BA401236-X	73869-X
F 1000	01/91	12/98	MWM D229A	4x4	DANA	46	OT	3,07 (43x14)	BA401236-X	
F 1000	01/91	12/98	MWM D229A	4x4	DANA	46	TL	3,07 (43x14)	BA401236-X	73865-X
F 1000	01/91	12/98	Turbo	4x2	DANA	46	OT	2,72 (49x18)	74202-1X	73869-X
F 1000	01/91	12/98	Turbo	4x2	DANA	46	OT	3,31 (43x13)	73866-1X	73869-X
F 1000	01/91	12/98	Turbo	4x2	DANA	46	OT	3,54 (46x13)	74203-1X	73869-X
F 1000	01/91	12/98	Turbo	4x2	DANA	46	OT	3,73 (41x11)	BA401157-1X	73869-X
F 1000	01/91	12/98	Turbo	4x2	DANA	46	TL	2,72 (49x18)	74202-1X	73865-X



024944	BA402028-X		BA401196-X	BA402079-X			101424	070572 Bearing Strap
024944	BA402028-X		BA401196-X	BA402079-X			101424	070530 U-Bolt
024944	BA402028-X		BA401196-X	BA402079-X			101424	070572 Bearing Strap
024944	BA402028-X		BA401196-X	BA402079-X			101424	070530 U-Bolt
024944	BA402028-X		BA401196-X	BA402079-X			101424	070572 Bearing Strap
024944	BA402028-X		BA401196-X	BA402079-X			101424	070530 U-Bolt
024944	BA402028-X		BA401196-X	BA402079-X			101424	070572 Bearing Strap
024944	BA402028-X		BA401196-X	BA402079-X			101424	070530 U-Bolt
				BA402079-X			101788	070587 Bearing Strap
				BA402079-X			101788	070587 Bearing Strap
				BA402079-X			101788	070587 Bearing Strap
022906	BA402029-X			BA402079-X			101788	070587 Bearing Strap
022906	BA402029-X			BA402079-X			101788	070587 Bearing Strap
022906	BA402029-X			BA402079-X			101788	070587 Bearing Strap
	BA401219-X	BA401161-X	BA401196-X	706032-X	BA401148-X	74201-2X	43993-2	73867-2X
	BA401219-X	BA401161-X	BA401196-X	706032-X	BA401148-X	74201-2X	43993-2	73867-2X
BA202747	BA401193-X	BA401161-X	BA401196-X	706032-X	BA401148-X	74201-2X	43993-2	73867-2X
BA202747	BA401219-X	BA401161-X	BA401196-X	706032-X	BA401148-X	74201-2X	43993-2	73867-2X
BA202747-1	BA401193-X	BA401161-X	BA401196-X	706032-X	BA401148-X	74201-2X	43993-2	73867-2X
BA202747-1	BA401193-X	BA401161-X	BA401196-X	706032-X	BA401148-X	74201-2X	43993-2	73867-2X
	BA401219-X	BA401161-X	BA401196-X	706032-X	BA401148-X	74201-2X	43993-2	73867-2X
BA202747	BA401193-X	BA401161-X	BA401196-X	706032-X	BA401148-X	74201-2X	43993-2	73867-2X
BA202747-1	BA401193-X	BA401161-X	BA401196-X	706032-X	BA401148-X	74201-2X	43993-2	73867-2X
43945	BA401219-X	BA401161-X	BA401196-X	706032-X	BA401148-X	74201-2X	43993-2	74200-X
BA202749	BA401193-X	BA401161-X	BA401196-X	706032-X	BA401148-X	74201-1X 2X	/ 74201-43993-1 2	/ 43993-73867-X
BA202747	BA401193-X	BA401161-X	BA401196-X	706032-X	BA401148-X	74201-2X	43993-2	73867-2X
43555	BA401219-X	BA401161-X	BA401196-X	706032-X	BA401148-X	74201-2X	43993-2	73867-2X
	BA401219-X	BA401161-X	BA401196-X	706032-X	BA401148-X	74201-2X	43993-2	73867-2X
BA202748	BA401193-X	BA401161-X	BA401196-X	706032-X	BA401148-X	74201-2X	43993-2	72586-X
43555	BA401219-X	BA401161-X	BA401196-X	706032-X	BA401148-X	74201-1X 2X	/ 74201-43993-1 2	/ 43993-72586-X
43555	BA401219-X	BA401161-X	BA401196-X	706032-X	BA401148-X	74201-1X 2X	/ 74201-43993-1 2	/ 43993-72586-X
43555	BA401219-X	BA401161-X	BA401196-X	706032-X	BA401148-X	74201-1X 2X	/ 74201-43993-2	72586-X
43555	BA401219-X	BA401161-X	BA401196-X	706032-X	BA401148-X	74201-1X 2X	/ 74201-43993-2	72586-X
BA202748	BA401193-X	BA401161-X	BA401196-X	706032-X	BA401148-X	74201-1X 2X	/ 74201-43993-1 2	/ 43993-72586-X

Aplicação por Montadora e Veículo / Eixos Diferenciais

Aplicación por Marca y Modelo / Ejes Diferenciales

Application by Make and Model / Differential Axles



FORD

F 1000	01/91	12/98	Turbo	4x2	DANA	46	TL	3,31 (43x13)	73866-1X	73865-X
F 1000	01/91	12/98	Turbo	4x2	DANA	46	TL	3,54 (46x13)	74203-1X	73865-X
F 1000	01/91	12/98	Turbo	4x2	DANA	46	TL	3,73 (41x11)	BA401157-1X	73865-X
F 1000	01/91	12/98	Turbo	4x2	DANA	46	OT	2,72 (49x18)	74202-1X	
F 1000	01/91	12/98	Turbo	4x2	DANA	46	OT	3,31 (43x13)	73866-1X	
F 1000	01/91	12/98	Turbo	4x2	DANA	46	OT	3,54 (46x13)	74203-1X	
F 1000	01/91	12/98	Turbo	4x2	DANA	46	OT	3,73 (41x11)	BA401157-1X	
F 1000	01/91	12/98	Turbo	4x2	DANA	46	TL	2,72 (49x18)	74202-1X	BA202652
F 1000	01/91	12/98	Turbo	4x2	DANA	46	TL	3,31 (43x13)	73866-1X	BA202652
F 1000	01/91	12/98	Turbo	4x2	DANA	46	TL	3,54 (46x13)	74203-1X	BA202652
F 1000	01/91	12/98	Turbo	4x2	DANA	46	TL	3,73 (41x11)	BA401157-1X	BA202652
F 1000	01/93	12/96			BRASEIXOS	405	DL	2,87 (43x15)		BA402036-X
	01/93	12/96			BRASEIXOS	405	DL	2,87 (43x15)		BA402036-X
F 1000	01/93	12/96			BRASEIXOS	405	DL	3,07 (43x14)	BA402062-X	BA402036-X
	01/93	12/96			BRASEIXOS	405	DL	3,07 (43x14)	BA402062-X	BA402036-X
F 1000	01/93	12/96			BRASEIXOS	405	DL	3,15 (41x13)	BA402060-X	BA402036-X
	01/93	12/96			BRASEIXOS	405	DL	3,15 (41x13)	BA402060-X	BA402036-X
F 1000	01/93	12/96			BRASEIXOS	405	DL	3,55 (39x11)	BA402059-X	BA402023-X
	01/93	12/96			BRASEIXOS	405	DL	3,55 (39x11)	BA402059-X	BA402023-X
F 1000	01/93	12/96			BRASEIXOS	405	DL	3,91 (43x11)	BA402058-X	BA402023-X
	01/93	12/96			BRASEIXOS	405	DL	3,91 (43x11)	BA402058-X	BA402023-X
F 1000	01/93	12/96			BRASEIXOS	405	DL	4,10 (41x10)	BA402061-X	BA402023-X
	01/93	12/96			BRASEIXOS	405	DL	4,10 (41x10)	BA402061-X	BA402023-X
F 1000	01/93	12/96			BRASEIXOS	405	DL	4,56 (41x9)		BA402023-X
	01/93	12/96			BRASEIXOS	405	DL	4,56 (41x9)		BA402023-X
F 1000	01/93	12/96			BRASEIXOS	405	DL	4,78 (43x9)		BA402023-X
	01/93	12/96			BRASEIXOS	405	DL	4,78 (43x9)		BA402023-X
F 1000	01/93	12/96			BRASEIXOS	405	OT	2,87 (43x15)		BA402035-X
	01/93	12/96			BRASEIXOS	405	OT	2,87 (43x15)		BA402035-X
F 1000	01/93	12/96			BRASEIXOS	405	OT	3,07 (43x14)	BA402062-X	BA402035-X
	01/93	12/96			BRASEIXOS	405	OT	3,07 (43x14)	BA402062-X	BA402035-X
F 1000	01/93	12/96			BRASEIXOS	405	OT	3,15 (41x13)	BA402060-X	BA402035-X
	01/93	12/96			BRASEIXOS	405	OT	3,15 (41x13)	BA402060-X	BA402035-X



BA202748	BA401193-X	BA401161-X	BA401196-X	706032-X	BA401148-X	74201-1X 2X	/ 74201-43993-1 2	/ 43993-72586-X
BA202748	BA401193-X	BA401161-X	BA401196-X	706032-X	BA401148-X	74201-1X 2X	/ 74201-43993-2	72586-X
BA202748	BA401193-X	BA401161-X	BA401196-X	706032-X	BA401148-X	74201-1X 2X	/ 74201-43993-2	72586-X
	BA401219-X	BA401161-X	BA401196-X	706032-X	BA401148-X	74201-1X 2X	/ 74201-43993-1 2	/ 43993-72586-X
	BA401219-X	BA401161-X	BA401196-X	706032-X	BA401148-X	74201-1X 2X	/ 74201-43993-1 2	/ 43993-72586-X
	BA401219-X	BA401161-X	BA401196-X	706032-X	BA401148-X	74201-1X 2X	/ 74201-43993-2	72586-X
	BA401219-X	BA401161-X	BA401196-X	706032-X	BA401148-X	74201-1X 2X	/ 74201-43993-2	72586-X
BA202748-1	BA401193-X	BA401161-X	BA401196-X	706032-X	BA401148-X	74201-1X 2X	/ 74201-43993-1 2	/ 43993-72586-X
BA202748-1	BA401193-X	BA401161-X	BA401196-X	706032-X	BA401148-X	74201-1X 2X	/ 74201-43993-1 2	/ 43993-72586-X
BA202748-1	BA401193-X	BA401161-X	BA401196-X	706032-X	BA401148-X	74201-1X 2X	/ 74201-43993-2	72586-X
BA202748-1	BA401193-X	BA401161-X	BA401196-X	706032-X	BA401148-X	74201-1X 2X	/ 74201-43993-2	72586-X
			BA401196-X	BA402079-X			101753	070530 U-Bolt
			BA401196-X	BA402079-X			101753	070572 Bearing Strap
			BA401196-X	BA402079-X			101753	070530 U-Bolt
			BA401196-X	BA402079-X			101753	070572 Bearing Strap
			BA401196-X	BA402079-X			101753	070572 Bearing Strap
			BA401196-X	BA402079-X			101753	070530 U-Bolt
			BA401196-X	BA402079-X			101753	070572 Bearing Strap
			BA401196-X	BA402079-X			101753	070530 U-Bolt
			BA401196-X	BA402079-X			101753	070572 Bearing Strap
			BA401196-X	BA402079-X			101753	070530 U-Bolt
			BA401196-X	BA402079-X			101753	070572 Bearing Strap
			BA401196-X	BA402079-X			101753	070530 U-Bolt
024943	BA402028-X		BA401196-X	BA402079-X			101753	070530 U-Bolt
024943	BA402028-X		BA401196-X	BA402079-X			101753	070572 Bearing Strap
024943	BA402028-X		BA401196-X	BA402079-X			101753	070572 Bearing Strap
024943	BA402028-X		BA401196-X	BA402079-X			101753	070530 U-Bolt
024943	BA402028-X		BA401196-X	BA402079-X			101753	070572 Bearing Strap
024943	BA402028-X		BA401196-X	BA402079-X			101753	070530 U-Bolt

Aplicação por Montadora e Veículo / Eixos Diferenciais

Aplicación por Marca y Modelo / Ejes Diferenciales

Application by Make and Model / Differential Axles



FORD

F 1000	01/93	12/96			BRASEIXOS	405	OT	3,55 (39x11)	BA402059-X	BA402032-X
	01/93	12/96			BRASEIXOS	405	OT	3,55 (39x11)	BA402059-X	BA402032-X
F 1000	01/93	12/96			BRASEIXOS	405	OT	3,91 (43x11)	BA402058-X	BA402032-X
	01/93	12/96			BRASEIXOS	405	OT	3,91 (43x11)	BA402058-X	BA402032-X
F 1000	01/93	12/96			BRASEIXOS	405	OT	4,10 (41x10)	BA402061-X	BA402032-X
	01/93	12/96			BRASEIXOS	405	OT	4,10 (41x10)	BA402061-X	BA402032-X
F 1000	01/93	12/96			BRASEIXOS	405	OT	4,56 (41x9)		BA402032-X
	01/93	12/96			BRASEIXOS	405	OT	4,56 (41x9)		BA402032-X
F 1000	01/93	12/96			BRASEIXOS	405	OT	4,78 (43x9)		BA402032-X
	01/93	12/96			BRASEIXOS	405	OT	4,78 (43x9)		BA402032-X
F 1000	01/93	12/98	Turbo	4x4	DANA	44	OT	3,07 (43x14)	71762-X	
F 2000	01/80	12/85	MWM D229	4x2	DANA	60	OT	3,73 (41x11)	BA401062-X	26188-X
F 2000	01/80	12/85	MWM D229	4x2	DANA	60	OT	4,10 (41x10)	BA401064-X	26188-X
F 250	01/99	12/05	Cummins 3.9 L	4x2	DANA	70	OT	3,73 (41x11)	BA401322-X	80239
F 250	01/99	12/05	FORD 4.2	4x2	DANA	70	OT	4,56 (41x9)	BA401324-X	80239
F 250	01/99	12/05	FORD 4.2	4x2	DANA	70	PL	4,56 (41x9)	BA401324-X	74624-X
F 250	01/99	12/05	MWM Sprint 4.2	4x2	DANA	70	OT	4,10 (41x10)	BA401323-X	80239
F 250	01/99	12/05	MWM Sprint 4.2	4x2	DANA	70	OT	4,56 (41x9)	BA401324-X	80239
F 250	01/99	12/05	MWM Sprint 4.2	4x2	DANA	70	PL	3,73 (41x11)	BA401322-X	74624-X
F 250	01/99	12/05	MWM Sprint 4.2	4x2	DANA	70	PL	4,10 (41x10)	BA401323-X	74624-X
F 350	01/99	12/05	MWM	4x2	DANA	70	OT	4,10 (41x10)	BA401323-X	80239
F 350	01/99	12/05	MWM	4x2	DANA	70	PL	4,10 (41x10)	BA401323-X	74624-X
F 4000	01/79	12/99			BRASEIXOS	411	OT	3,90 (39x10)	BA402070-X	BA402041-X
	01/79	12/99			BRASEIXOS	411	OT	3,90 (39x10)	BA402070-X	BA402041-X
F 4000	01/79	12/99			BRASEIXOS	411	OT	4,10 (41x10)	BA402071-X	BA402041-X
	01/79	12/99			BRASEIXOS	411	OT	4,10 (41x10)	BA402071-X	BA402041-X
F 4000	01/79	12/99			BRASEIXOS	411	OT	4,63 (37x8)	BA402104-X	BA402042-X
	01/79	12/99			BRASEIXOS	411	OT	4,63 (37x8)	BA402104-X	BA402042-X
F 4000	01/79	12/99			BRASEIXOS	411	OT	5,38 (43x8)	BA402073-X	BA402042-X
	01/79	12/99			BRASEIXOS	411	OT	5,38 (43x8)	BA402073-X	BA402042-X
F 4000	01/79	04/96	MWM D229A	4x2	DANA	70HD	OT	4,10 (41x10)	BA401237-X	BA202054
F 4000	01/79	04/96	MWM D229A	4x2	DANA	70HD	OT	4,56 (41x9)	BA401092-X	BA202054



024944	BA402028-X		BA401196-X	BA402079-X		101753	070530 U-Bolt
024944	BA402028-X		BA401196-X	BA402079-X		101753	070572 Bearing Strap
024944	BA402028-X		BA401196-X	BA402079-X		101753	070530 U-Bolt
024944	BA402028-X		BA401196-X	BA402079-X		101753	070572 Bearing Strap
024944	BA402028-X		BA401196-X	BA402079-X		101753	070530 U-Bolt
024944	BA402028-X		BA401196-X	BA402079-X		101753	070572 Bearing Strap
024944	BA402028-X		BA401196-X	BA402079-X		101753	070530 U-Bolt
024944	BA402028-X		BA401196-X	BA402079-X		101753	070572 Bearing Strap
024944	BA402028-X		BA401196-X	BA402079-X		101753	070530 U-Bolt
024944	BA402028-X		BA401196-X	BA402079-X		101753	070572 Bearing Strap
				706032-X	BA401146-X		
30357	706043-X	BA401077-X	BA401223-X	706047-X			73867-X
30357	706043-X	BA401077-X	BA401223-X	706047-X			73867-X
49762	707252-1X	701144-X	BA401325-X	706047-X	BA401270-X / BA401271-X	48302-1 / 4	48302- 76334-X
49762	707252-1X	701144-X	BA401325-X	706047-X	BA401270-X / BA401271-X	48302-1 / 4	48302- 76334-X
73270-X	707254-X	701144-X	BA401325-X	706047-X	BA401270-X / BA401271-X	48302-1 / 4	48302- 76334-X
49762	707252-1X	701144-X	BA401325-X	706047-X	BA401270-X / BA401271-X	48302-1 / 4	48302- 76334-X
49762	707252-1X	701144-X	BA401325-X	706047-X	BA401270-X / BA401271-X	48302-1 / 4	48302- 76334-X
73270-X	707254-X	701144-X	BA401325-X	706047-X	BA401270-X / BA401271-X	48302-1 / 4	48302- 76334-X
73270-X	707254-X	701144-X	BA401325-X	706047-X	BA401270-X / BA401271-X	48302-1 / 4	48302- 76334-X
49762	707252-1X	701144-X	BA401325-X	706047-X	BA401270-X / BA401271-X	48302-1 / 4	48302- 76334-X
73270-X	707254-X	701144-X	BA401325-X	706047-X	BA401270-X / BA401271-X	48302-1 / 4	48302- 76334-X
024443 ø 25,35mm	BA402031-X ø 25,35mm	BA402006-X	BA401377-X	BA402092-X		101152	070462
024206 ø 28,56mm		BA402006-X	BA401377-X	BA402092-X		101152	070462
024443 ø 25,35mm	BA402031-X ø 25,35mm	BA402006-X	BA401377-X	BA402092-X		101152	070453
024206 ø 28,56mm		BA402006-X	BA401377-X	BA402092-X		101152	070453
024436 ø 25,35mm	BA402031-X ø 25,35mm	BA402006-X	BA401377-X	BA402092-X		101152	070453
024208 ø 28,56mm		BA402006-X	BA401377-X	BA402092-X		101152	070453
024436 ø 25,35mm	BA402031-X ø 25,35mm	BA402006-X	BA401377-X	BA402092-X		101152	070453
024208 ø 28,56mm		BA402006-X	BA401377-X	BA402092-X		101152	070453
BA201870	BA401227-X	BA401078-X	BA401223-X	BA401197-X			72586-X
BA201868	BA401227-X	BA401225-X	BA401223-X	BA401197-X		BA201230	72586-X

Aplicação por Montadora e Veículo / Eixos Diferenciais

Aplicación por Marca y Modelo / Ejes Diferenciales

Application by Make and Model / Differential Axles



FORD

F 4000	05/96	12/99	MWM 4.10 T	4x2	DANA	80	OT	4,63 (37x8)	73167-1X	Freio a disco	73165-X	Freio a disco
F 4000	01/00	12/02	Cummins 4BTAA 3.9	4x2	DANA	80	OT	4,63 (37x8)	73167-1X		74244-X	
Jeep	01/60	12/78			DANA	44	OT	5,38 (43x8)				BA202934 Alternativa
Jeep	01/60	12/78		4x4	DANA	44	OT	4,89 (44x9)				BA202934 Alternativa
Ranger	01/98	12/04	2.3 L 8V SOHC L4	4x2	DANA	44-3	OT	3,73 (41x11)	BA401378-X			BA202934
Ranger	01/98	12/04	2.3 L 8V SOHC L4	4x2	DANA	44-3	OT	4,09 (45x11)	BA401379-X			BA203323
Ranger	01/98	12/04	2.3 L 8V SOHC L4	4x2	DANA	44-3	OT	4,56 (41x9)	BA401380-X			BA203323
Ranger	01/98	12/04	2.3 L 8V SOHC L4	4x2	DANA	44-3	TL	3,73 (41x11)	BA401378-X			BA202835
Ranger	01/98	12/04	2.3 L 8V SOHC L4	4x2	DANA	44-3	TL	4,09 (45x11)	BA401379-X			BA202818
Ranger	01/98	12/05	2.8 HS MAXION	4x2	DANA	44-3	OT	4,09 (45x11)	BA401379-X			BA203323
Ranger	01/98	12/05	2.8 HS MAXION	4x2	DANA	44-3	TL	4,09 (45x11)	BA401379-X			BA202818
Ranger	01/98	12/05	2.8 HS MAXION	4x4	DANA	44-3	OT	4,09 (45x11)	BA401379-X			BA203323
Ranger	01/98	12/05	2.8 HS MAXION	4x4	DANA	44-3	TL	4,09 (45x11)	BA401379-X			BA202818
Ranger	01/98	12/02	4.0 L 12V SOHC V6	4x2	DANA	44-3	OT	3,73 (41x11)	BA401378-X			BA202934
Ranger	01/98	12/02	4.0 L 12V SOHC V6	4x2	DANA	44-3	OT	4,09 (45x11)	BA401379-X			BA203323
Ranger	01/98	12/02	4.0 L 12V SOHC V6	4x2	DANA	44-3	OT	4,56 (41x9)	BA401380-X			BA203323
Ranger	01/98	12/02	4.0 L 12V SOHC V6	4x2	DANA	44-3	TL	3,73 (41x11)	BA401378-X			BA202835
Ranger	01/98	12/02	4.0 L 12V SOHC V6	4x2	DANA	44-3	TL	4,09 (45x11)	BA401379-X			BA202818
Ranger	01/98	12/02	4.0 L 12V SOHC V6	4x4	DANA	44-3	OT	3,73 (41x11)	BA401378-X			BA202934
Ranger	01/98	12/02	4.0 L 12V SOHC V6	4x4	DANA	44-3	OT	4,09 (45x11)	BA401379-X			BA203323
Ranger	01/98	12/02	4.0 L 12V SOHC V6	4x4	DANA	44-3	OT	4,56 (41x9)	BA401380-X			BA203323
Ranger	01/98	12/02	4.0 L 12V SOHC V6	4x4	DANA	44-3	TL	3,73 (41x11)	BA401378-X			BA202835



42409 Freio a disco	BA401202-X Freio a disco	BA401201-X Freio a disco	BA401163-X Freio a disco	BA401197-X Freio a disco			BA202449 Freio a disco	Freio a disco	BA202497 Freio a disco
44030	BA401202-X	BA401326-X	BA401328-X	707070-X		BA401277-X	48316-1		75434-X
BA203254 Alternativa	BA401010-X	BA401215-X Alternativa	BA401214-X Alternativa						BA201385-X Alternativa
BA203254 Alternativa	BA401010-X	BA401215-X Alternativa	BA401214-X Alternativa						BA201385-X Alternativa
BA203254	BA401178-X		BA401214-X	706032-X	BA401349	BA203362-2 3/4 Ton / BA203362-1 3/4 Ton	BA203267-2 / BA203267-1		BA203334
BA203324	BA401178-X		BA401214-X	706032-X	BA401349	BA203362-2 3/4 Ton / BA203362-1 3/4 Ton	BA203267-2 / BA203267-1		BA203334
BA203324	BA401178-X		BA401214-X	706032-X	BA401349	BA203362-2 3/4 Ton / BA203362-1 3/4 Ton	BA203267-2 / BA203267-1		BA203334
BA203424	BA401186-X		BA401214-X	706032-X	BA401349	BA203362-2 3/4 Ton / BA203362-1 3/4 Ton	BA203267-2 / BA203267-1		BA203334
BA203326	BA401186-X		BA401214-X	706032-X	BA401349	BA203362-2 3/4 Ton / BA203362-1 3/4 Ton	BA203267-2 / BA203267-1		BA203334
BA203324	BA401178-X		BA401214-X	706032-X	BA401348	BA203338-2 1 Ton / BA203338-1 1 Ton	BA203263-2 / BA203263-1		BA203334
BA203326	BA401186-X		BA401214-X	706032-X	BA401348	BA203338-2 1 Ton / BA203338-1 1 Ton	BA203263-2 / BA203263-1		BA203334
BA203324	BA401178-X		BA401214-X	706032-X	BA401348	BA203338-2 1 Ton / BA203338-1 1 Ton	BA203263-2 / BA203263-1		BA203334
BA203326	BA401186-X		BA401214-X	706032-X	BA401348	BA203338-2 1 Ton / BA203338-1 1 Ton	BA203263-2 / BA203263-1		BA203334
BA203254	BA401178-X		BA401214-X	706032-X	BA401349	BA203362-2 3/4 Ton / BA203362-1 3/4 Ton	BA203267-2 / BA203267-1		BA203334
BA203324	BA401178-X		BA401214-X	706032-X	BA401349	BA203362-2 3/4 Ton / BA203362-1 3/4 Ton	BA203267-2 / BA203267-1		BA203334
BA203424	BA401186-X		BA401214-X	706032-X	BA401349	BA203362-2 3/4 Ton / BA203362-1 3/4 Ton	BA203267-2 / BA203267-1		BA203334
BA203326	BA401186-X		BA401214-X	706032-X	BA401349	BA203362-2 3/4 Ton / BA203362-1 3/4 Ton	BA203267-2 / BA203267-1		BA203334
BA203254	BA401178-X		BA401214-X	706032-X	BA401349	BA203362-2 3/4 Ton / BA203362-1 3/4 Ton	BA203267-2 / BA203267-1		BA203334
BA203324	BA401178-X		BA401214-X	706032-X	BA401349	BA203362-2 3/4 Ton / BA203362-1 3/4 Ton	BA203267-2 / BA203267-1		BA203334
BA203324	BA401178-X		BA401214-X	706032-X	BA401349	BA203362-2 3/4 Ton / BA203362-1 3/4 Ton	BA203267-2 / BA203267-1		BA203334
BA203424	BA401186-X		BA401214-X	706032-X	BA401349	BA203362-2 3/4 Ton / BA203362-1 3/4 Ton	BA203267-2 / BA203267-1		BA203334

Aplicação por Montadora e Veículo / Eixos Diferenciais

Aplicación por Marca y Modelo / Ejes Diferenciales

Application by Make and Model / Differential Axles



FORD

Ranger	01/98	12/02	4.0 L 12V SOHC V6	4x4	DANA	44-3	TL	4,09 (45x11)	BA401379-X	BA202818
--------	-------	-------	-------------------	-----	------	------	----	--------------	------------	----------

GENERAL MOTORS

A/C/D 20	01/78	12/96		4x2	DANA	46	OT	3,15 (41x13)	74172-1X	
A/C/D 20	01/78	12/96		4x2	DANA	46	OT	3,92 (47x12)	74173-1X	74176-X
A/C/D 20	01/78	12/96		4x2	DANA	46	TL	3,15 (41x13)		BA401205-X
A/C/D 20	01/78	12/96		4x4	DANA	44	OT	3,31 (43x13)	23592-1X	
	01/78	12/96		4x4	DANA	44	OT	3,31 (43x13)		BA202934 Alternativa
A/C/D 20	01/78	12/96		4x4	DANA	44	TL	3,31 (43x13)	23592-1X	BA202835 Alternativa
A/C/D 20	01/78	12/96		4x4	DANA	46	OT	3,31 (43x13)	73866-1X	73869-X
A/C/D 20	01/78	12/96		4x4	DANA	46	TL	3,31 (43x13)	73866-1X	BA202652
A/C/D 20	01/78	12/96		4x4	DANA	46	OT	3,31 (43x13)	73866-1X	
A/C/D 20	01/78	12/96		4x4	DANA	46	TL	3,15 (41x13)		BA401205-X
A/C/D 20	01/78	12/96		4x4	DANA	46	TL	3,31 (43x13)	73866-1X	73865-X
A/C/D 20	01/85	12/92			BRASEIXOS	405	DL	2,87 (43x15)		BA402036-X
A/C/D 20	01/85	12/92			BRASEIXOS	405	DL	3,07 (43x14)	BA402062-X	BA402036-X
A/C/D 20	01/85	12/92			BRASEIXOS	405	DL	3,15 (41x13)	BA402060-X	BA402036-X
A/C/D 20	01/85	12/92			BRASEIXOS	405	DL	3,55 (39x11)	BA402059-X	BA402023-X
A/C/D 20	01/85	12/92			BRASEIXOS	405	DL	3,91 (43x11)	BA402058-X	BA402023-X
A/C/D 20	01/85	12/92			BRASEIXOS	405	DL	4,10 (41x10)	BA402061-X	BA402023-X
A/C/D 20	01/85	12/92			BRASEIXOS	405	DL	4,56 (41x9)		BA402023-X
A/C/D 20	01/85	12/92			BRASEIXOS	405	DL	4,78 (43x9)		BA402023-X
A/C/D 20	01/85	12/92			BRASEIXOS	405	OT	2,87 (43x15)		BA402035-X
A/C/D 20	01/85	12/92			BRASEIXOS	405	OT	3,07 (43x14)	BA402062-X	BA402035-X
A/C/D 20	01/85	12/92			BRASEIXOS	405	OT	3,15 (41x13)	BA402060-X	BA402035-X
A/C/D 20	01/85	12/92			BRASEIXOS	405	OT	3,55 (39x11)	BA402059-X	BA402032-X
A/C/D 20	01/85	12/92			BRASEIXOS	405	OT	3,91 (43x11)	BA402058-X	BA402032-X
A/C/D 20	01/85	12/92			BRASEIXOS	405	OT	4,10 (41x10)	BA402061-X	BA402032-X
A/C/D 20	01/85	12/92			BRASEIXOS	405	OT	4,56 (41x9)		BA402032-X
A/C/D 20	01/85	12/92			BRASEIXOS	405	OT	4,78 (43x9)		BA402032-X
A/C/D 20	01/85	12/96	Turbo		BRASEIXOS	406	DL	2,53 (43x17)		
A/C/D 20	01/85	12/96	Turbo		BRASEIXOS	406	DL	3,07 (43x14)	BA402066-X	
A/C/D 20	01/85	12/96	Turbo		BRASEIXOS	406	DL	3,58 (43x12)		
A/C/D 20	01/85	12/96	Turbo		BRASEIXOS	406	OT	2,53 (43x17)		
A/C/D 20	01/85	12/96	Turbo		BRASEIXOS	406	OT	3,07 (43x14)	BA402066-X	
A/C/D 20	01/85	12/96	Turbo		BRASEIXOS	406	OT	3,58 (43x12)		
A/C/D 20	01/93	12/96			BRASEIXOS	405	DL	2,87 (43x15)		BA402036-X
A/C/D 20	01/93	12/96			BRASEIXOS	405	DL	3,07 (43x14)	BA402062-X	BA402036-X
A/C/D 20	01/93	12/96			BRASEIXOS	405	DL	3,15 (41x13)	BA402060-X	BA402036-X
A/C/D 20	01/93	12/96			BRASEIXOS	405	DL	3,55 (39x11)	BA402059-X	BA402023-X
A/C/D 20	01/93	12/96			BRASEIXOS	405	DL	3,91 (43x11)	BA402058-X	BA402023-X



BA203326	BA401186-X		BA401214-X	706032-X	BA401349	BA203362-2 3/4 Ton / BA203362-1 3/4 Ton	BA203267-2 / BA203267-1	BA203334
	BA401219-X	BA401161-X	BA401196-X	706032-X			43946	73867-X
43945	BA401219-X	BA401161-X	BA401196-X	706032-X			43946	73867-X
BA202748	BA401193-X							
BA203254 Alternativa	BA401103-X BA401178-X Alternativa	BA401098-X BA401215-X Alternativa	BA401214-X	706032-X				
BA203424 Alternativa	BA401186-X	BA401215-X Alternativa	BA401214-X	706032-X				
43555	BA401193-X	BA401161-X	BA401196-X	706032-X				73867-X
BA202748-1	BA401193-X	BA401161-X	BA401196-X	706032-X				73867-X
	BA401219-X	BA401161-X	BA401196-X	706032-X				73867-X
BA202748	BA401193-X							
BA202748	BA401193-X	BA401161-X	BA401196-X	706032-X				73867-X
			BA401196-X	BA402079-X			101350	070530
			BA401196-X	BA402079-X			101350	070530
			BA401196-X	BA402079-X			101350	070530
			BA401196-X	BA402079-X			101350	070530
			BA401196-X	BA402079-X			101350	070530
			BA401196-X	BA402079-X			101350	070530
			BA401196-X	BA402079-X			101350	070530
024943	BA402028-X		BA401196-X	BA402079-X			101350	070530
024943	BA402028-X		BA401196-X	BA402079-X			101350	070530
024943	BA402028-X		BA401196-X	BA402079-X			101350	070530
024944	BA402028-X		BA401196-X	BA402079-X			101350	070530
024944	BA402028-X		BA401196-X	BA402079-X			101350	070530
024944	BA402028-X		BA401196-X	BA402079-X			101350	070530
024944	BA402028-X		BA401196-X	BA402079-X			101350	070530
024944	BA402028-X		BA401196-X	BA402079-X			101350	070530
024944	BA402028-X		BA401196-X	BA402079-X			101350	070530
				BA402079-X			101851	070261
				BA402079-X			101851	070261
				BA402079-X			101851	070261
022906	BA402029-X			BA402079-X			101851	070261
022906	BA402029-X			BA402079-X			101851	070261
022906	BA402029-X			BA402079-X			101851	070261
			BA401196-X	BA402079-X			101371	070531
			BA401196-X	BA402079-X			101371	070531
			BA401196-X	BA402079-X			101350	070531
			BA401196-X	BA402079-X			101371	070531
			BA401196-X	BA402079-X			101371	070531

Aplicação por Montadora e Veículo / Eixos Diferenciais

Aplicación por Marca y Modelo / Ejes Diferenciales

Application by Make and Model / Differential Axles



GENERAL MOTORS

A/C/D 20	01/93	12/96			BRASEIXOS	405	DL	4,10 (41x10)	BA402061-X	BA402023-X
A/C/D 20	01/93	12/96			BRASEIXOS	405	DL	4,56 (41x9)		BA402023-X
A/C/D 20	01/93	12/96			BRASEIXOS	405	DL	4,78 (43x9)		BA402023-X
A/C/D 20	01/93	12/96			BRASEIXOS	405	OT	2,87 (43x15)		BA402035-X
A/C/D 20	01/93	12/96			BRASEIXOS	405	OT	3,07 (43x14)	BA402062-X	BA402035-X
A/C/D 20	01/93	12/96			BRASEIXOS	405	OT	3,15 (41x13)	BA402060-X	BA402035-X
A/C/D 20	01/93	12/96			BRASEIXOS	405	OT	3,55 (39x11)	BA402059-X	BA402032-X
A/C/D 20	01/93	12/96			BRASEIXOS	405	OT	3,91 (43x11)	BA402058-X	BA402032-X
A/C/D 20	01/93	12/96			BRASEIXOS	405	OT	4,10 (41x10)	BA402061-X	BA402032-X
A/C/D 20	01/93	12/96			BRASEIXOS	405	OT	4,56 (41x9)		BA402032-X
A/C/D 20	01/93	12/96			BRASEIXOS	405	OT	4,78 (43x9)		BA402032-X
A/C/D 20	01/96	12/96	4.1 6 cil	4x2	DANA	46	OT	4,27 (47x11)	BA401156-1X	BA202692-3
A/C/D 40	01/85	12/95			BRASEIXOS	411	OT	3,90 (39x10)	BA402070-X	BA402041-X
A/C/D 40	01/85	12/95			BRASEIXOS	411	OT	3,90 (39x10)	BA402070-X	BA402041-X
A/C/D 40	01/85	12/95			BRASEIXOS	411	OT	4,10 (41x10)	BA402071-X	BA402041-X
A/C/D 40	01/85	12/95			BRASEIXOS	411	OT	4,10 (41x10)	BA402071-X	BA402041-X
A/C/D 40	01/85	12/95			BRASEIXOS	411	OT	4,63 (37x8)	BA402104-X	BA402042-X
A/C/D 40	01/85	12/95			BRASEIXOS	411	OT	4,63 (37x8)	BA402104-X	BA402042-X
A/C/D 40	01/85	12/95			BRASEIXOS	411	OT	5,38 (43x8)	BA402073-X	BA402042-X
A/C/D 40	01/85	12/95			BRASEIXOS	411	OT	5,38 (43x8)	BA402073-X	BA402042-X
Blazer	01/96	02/97	2.2 EFI	4x2	DANA	46	OT	4,78 (43x9)	BA401154-1X	74176-X
Blazer	01/96	02/97	2.2 EFI	4x2	DANA	46	TL	4,78 (43x9)	BA401154-1X	BA202310
Blazer	01/96	02/97	2.2 EFI	4x2	DANA	46	OT	4,78 (43x9)	BA401154-1X	BA202692-3
Blazer	01/96	02/97	2.2 EFI	4x2	DANA	46	TL	4,78 (43x9)	BA401154-1X	BA202310
Blazer	01/96	02/97	2.5 HS MAXION	4x2	DANA	46	OT	4,09 (45x11)	BA401153-1X	74176-X
Blazer	01/96	02/97	2.5 HS MAXION	4x2	DANA	46	OT	4,27 (47x11)	BA401156-1X	74176-X
Blazer	01/96	02/97	2.5 HS MAXION	4x2	DANA	46	OT	4,56 (41x9)	BA401155-1X	74176-X
Blazer	01/96	02/97	2.5 HS MAXION	4x2	DANA	46	TL	4,09 (45x11)	BA401153-1X	BA202310
Blazer	01/96	02/97	2.5 HS MAXION	4x2	DANA	46	TL	4,56 (41x9)	BA401155-1X	BA202310
Blazer	01/96	02/97	2.5 HS MAXION	4x2	DANA	46	OT	4,09 (45x11)	BA401153-1X	BA202692-3
Blazer	01/96	02/97	2.5 HS MAXION	4x2	DANA	46	OT	4,27 (47x11)	BA401156-1X	BA202692-3
Blazer	01/96	02/97	2.5 HS MAXION	4x2	DANA	46	OT	4,56 (41x9)	BA401155-1X	BA202692-3
Blazer	01/96	02/97	2.5 HS MAXION	4x2	DANA	46	TL	4,09 (45x11)	BA401153-1X	BA202310
Blazer	01/96	02/97	2.5 HS MAXION	4x2	DANA	46	TL	4,27 (47x11)	BA401156-1X	BA202310
Blazer	01/96	02/97	2.5 HS MAXION	4x2	DANA	46	TL	4,56 (41x9)	BA401155-1X	BA202310
Blazer	01/96	02/97	4.3 MPFI V6	4x2	DANA	46	OT	3,73 (41x11)	BA401157-1X	73869-X
Blazer	01/96	02/97	4.3 MPFI V6	4x2	DANA	46	TL	3,73 (41x11)	BA401157-1X	73865-X
Blazer	01/96	02/97	4.3 MPFI V6	4x2	DANA	46	OT	3,73 (41x11)	BA401157-1X	
Blazer	01/96	02/97	4.3 MPFI V6	4x2	DANA	46	TL	3,73 (41x11)	BA401157-1X	BA202652



			BA401196-X	BA402079-X			101371	070531
			BA401196-X	BA402079-X			101371	070531
			BA401196-X	BA402079-X			101371	070531
024943	BA402028-X		BA401196-X	BA402079-X			101371	070531
024943	BA402028-X		BA401196-X	BA402079-X			101371	070531
024943	BA402028-X		BA401196-X	BA402079-X			101371	070531
024944	BA402028-X		BA401196-X	BA402079-X			101371	070531
024944	BA402028-X		BA401196-X	BA402079-X			101371	070531
024944	BA402028-X		BA401196-X	BA402079-X			101371	070531
024944	BA402028-X		BA401196-X	BA402079-X			101371	070531
024944	BA402028-X		BA401196-X	BA402079-X			101371	070531
024944	BA402028-X		BA401196-X	BA402079-X			101371	070531
43945-1	BA401219-X	BA401161-X	BA401196-X	706032-X	BA401228-X	BA202471	BA202662-2	73867-X
024206 ø 28,56mm		BA402006-X	BA401377-X	BA402092-X			101847	070462
024443 ø 25,35mm	BA402031-X ø 25,35mm	BA402006-X	BA401377-X	BA402092-X			101847	070462
024206 ø 28,56mm		BA402006-X	BA401377-X	BA402092-X			101847	070462
024443 ø 25,35mm	BA402031-X ø 25,35mm	BA402006-X	BA401377-X	BA402092-X			101847	070462
024436 ø 25,35mm	BA402031-X ø 25,35mm	BA402006-X	BA401377-X	BA402092-X			101847	070462
024208 ø 28,56mm		BA402006-X	BA401377-X	BA402092-X			101847	070462
024436 ø 25,35mm	BA402031-X ø 25,35mm	BA402006-X	BA401377-X	BA402092-X			101847	070462
024208 ø 28,56mm		BA402006-X	BA401377-X	BA402092-X			101847	070462
43945	BA401219-X	BA401161-X	BA401196-X	706032-X	BA401148-X	73868-4X	BA202662-1	73867-2X
BA202747	BA401193-X	BA401161-X	BA401196-X	706032-X	BA401148-X	73868-4X	BA202662-1	73867-2X
43945-1	BA401219-X	BA401161-X	BA401196-X	706032-X	BA401148-X	73868-4X	BA202662-1	73867-2X
BA202747	BA401193-X	BA401161-X	BA401196-X	706032-X	BA401148-X	73868-4X	BA202662-1	73867-2X
43945	BA401219-X	BA401161-X	BA401196-X	706032-X	BA401148-X	73868-4X	BA202662-1	73867-2X
43945	BA401219-X	BA401161-X	BA401196-X	706032-X	BA401148-X	73868-4X	BA202662-1	73867-2X
43945	BA401219-X	BA401161-X	BA401196-X	706032-X	BA401148-X	73868-4X	BA202662-1	73867-2X
BA202747	BA401193-X	BA401161-X	BA401196-X	706032-X	BA401148-X	73868-4X	BA202662-1	73867-2X
BA202747	BA401193-X	BA401161-X	BA401196-X	706032-X	BA401148-X	73868-4X	BA202662-1	73867-2X
43945-1	BA401219-X	BA401161-X	BA401196-X	706032-X	BA401148-X	73868-4X	BA202662-1	73867-2X
43945-1	BA401219-X	BA401161-X	BA401196-X	706032-X	BA401148-X	73868-4X	BA202662-1	73867-2X
43945-1	BA401219-X	BA401161-X	BA401196-X	706032-X	BA401148-X	73868-4X	BA202662-1	73867-2X
BA202747	BA401193-X	BA401161-X	BA401196-X	706032-X	BA401148-X	73868-4X	BA202662-1	73867-2X
BA202747	BA401193-X	BA401161-X	BA401196-X	706032-X	BA401148-X	73868-4X	BA202662-1	73867-2X
BA202747	BA401193-X	BA401161-X	BA401196-X	706032-X	BA401148-X	73868-4X	BA202662-1	73867-2X
43555	BA401219-X	BA401161-X	BA401196-X	706032-X	BA401148-X	73868-4X	BA202662-1	73867-2X
BA202748	BA401193-X	BA401161-X	BA401196-X	706032-X	BA401148-X	73868-4X	BA202662-1	73867-2X
	BA401219-X	BA401161-X	BA401196-X	706032-X	BA401148-X	73868-4X	BA202662-1	73867-2X
BA202748-1	BA401193-X	BA401161-X	BA401196-X	706032-X	BA401148-X	73868-4X	BA202662-1	73867-2X

Aplicação por Montadora e Veículo / Eixos Diferenciais

Aplicación por Marca y Modelo / Ejes Diferenciales

Application by Make and Model / Differential Axles



GENERAL MOTORS

Blazer	03/97	02/99	2.2 EFI	4x2	DANA	35	OT	4,78 (43x9)	BA401231-X	
Blazer	03/97	02/99	2.2 EFI	4x2	DANA	35	TL	4,78 (43x9)	BA401231-X	
Blazer	03/97	12/02	2.5 HS MAXION	4x2	DANA	44-3	OT	4,27 (47x11)	BA401232-X	BA202814
Blazer	03/97	12/02	2.5 HS MAXION	4x2	DANA	44-3	OT	4,78 (43x9)	BA401234-X	BA202814
Blazer	03/97	12/02	2.5 HS MAXION	4x2	DANA	44-3	TL	4,27 (47x11)	BA401232-X	BA202818
Blazer	03/97	12/02	2.5 HS MAXION	4x2	DANA	44-3	TL	4,78 (43x9)	BA401234-X	BA202818
Blazer	03/97	12/02	4.3 MPFI V6	4x2	DANA	44-3	OT	3,73 (41x11)	BA401233-X	BA202934
Blazer	03/97	12/02	4.3 MPFI V6	4x2	DANA	44-3	TL	3,73 (41x11)	BA401233-X	BA202835
Blazer	01/01	12/02	MWM Sprint 2.8 4T EATON	4x2	DANA	44-3	OT	4,27 (47x11)	BA401320-X	BA203301
Blazer	01/01	12/02	MWM Sprint 2.8 4T EATON	4x4	DANA	44-3	OT	4,27 (47x11)	BA401320-X	BA203301
Chevy 500	01/83	12/92			DANA	26T	OT	3,90 (39x10)		
Chevy 500	01/83	12/92			DANA	26T	OT	4,11 (37x9)		
Marajó	01/83	12/92			DANA	26T	OT	3,90 (39x10)		
Marajó	01/83	12/92			DANA	26T	OT	4,11 (37x9)		
S10	01/96	02/97	2.2 EFI	4x2	DANA	46	OT	4,78 (43x9)	BA401154-1X	74176-X
S10	01/96	02/97	2.2 EFI	4x2	DANA	46	TL	4,78 (43x9)	BA401154-1X	BA202310
S10	01/96	02/97	2.2 EFI	4x2	DANA	46	OT	4,78 (43x9)	BA401154-1X	BA202692-3
S10	01/96	02/97	2.2 EFI	4x2	DANA	46	TL	4,78 (43x9)	BA401154-1X	BA202310
S10	01/96	02/97	2.5 HS MAXION	4x2	DANA	46	OT	4,09 (45x11)	BA401153-1X	74176-X
S10	01/96	02/97	2.5 HS MAXION	4x2	DANA	46	OT	4,27 (47x11)	BA401156-1X	74176-X
S10	01/96	02/97	2.5 HS MAXION	4x2	DANA	46	OT	4,56 (41x9)	BA401155-1X	74176-X
S10	01/96	02/97	2.5 HS MAXION	4x2	DANA	46	TL	4,09 (45x11)	BA401153-1X	BA202310
S10	01/96	02/97	2.5 HS MAXION	4x2	DANA	46	TL	4,56 (41x9)	BA401155-1X	BA202310
S10	01/96	02/97	2.5 HS MAXION	4x2	DANA	46	OT	4,09 (45x11)	BA401153-1X	BA202692-3
S10	01/96	02/97	2.5 HS MAXION	4x2	DANA	46	OT	4,27 (47x11)	BA401156-1X	BA202692-3
S10	01/96	02/97	2.5 HS MAXION	4x2	DANA	46	OT	4,56 (41x9)	BA401155-1X	BA202692-3
S10	01/96	02/97	2.5 HS MAXION	4x2	DANA	46	TL	4,09 (45x11)	BA401153-1X	BA202310
S10	01/96	02/97	2.5 HS MAXION	4x2	DANA	46	TL	4,27 (47x11)	BA401156-1X	BA202310
S10	01/96	02/97	2.5 HS MAXION	4x2	DANA	46	TL	4,56 (41x9)	BA401155-1X	BA202310
S10	01/96	02/97	4.3 MPFI V6	4x2	DANA	46	OT	3,73 (41x11)	BA401157-1X	73869-X
S10	01/96	02/97	4.3 MPFI V6	4x2	DANA	46	TL	3,73 (41x11)	BA401157-1X	73865-X
S10	01/96	02/97	4.3 MPFI V6	4x2	DANA	46	OT	3,73 (41x11)	BA401157-1X	
S10	01/96	02/97	4.3 MPFI V6	4x2	DANA	46	TL	3,73 (41x11)	BA401157-1X	BA202652
S10	03/97	02/99	2.2 EFI	4x2	DANA	35	OT	4,78 (43x9)	BA401231-X	
S10	03/97	02/99	2.2 EFI	4x2	DANA	35	TL	4,78 (43x9)	BA401231-X	
S10	03/97	12/02	2.5 HS MAXION	4x2	DANA	44-3	OT	4,27 (47x11)	BA401232-X	BA202814
S10	03/97	12/02	2.5 HS MAXION	4x2	DANA	44-3	OT	4,78 (43x9)	BA401234-X	BA202814
S10	03/97	12/02	2.5 HS MAXION	4x2	DANA	44-3	TL	4,27 (47x11)	BA401232-X	BA202818
S10	03/97	12/02	2.5 HS MAXION	4x2	DANA	44-3	TL	4,78 (43x9)	BA401234-X	BA202818
S10	03/97	12/02	4.3 MPFI V6	4x2	DANA	44-3	OT	3,73 (41x11)	BA401233-X	BA202934
S10	03/97	12/02	4.3 MPFI V6	4x2	DANA	44-3	TL	3,73 (41x11)	BA401233-X	BA202835
S10	01/01	12/02	MWM Sprint 2.8 4T EATON	4x2	DANA	44-3	OT	4,27 (47x11)	BA401320-X	BA203301

Aplicação por Montadora e Veículo / Eixos Diferenciais

Aplicación por Marca y Modelo / Ejes Diferenciales

Application by Make and Model / Differential Axles



GENERAL MOTORS

S10	01/01	12/02	MWM Sprint 2.8 4T EATON	4x4	DANA	44-3	OT	4,27 (47x11)	BA401320-X	BA203301
Silverado	01/97	12/99	4.1 6cil MPFI	4x2	DANA	46	TL	4,27 (47x11)	BA401156-1X	BA202310
Silverado	01/97	12/99	Maxion 4cil	4x2	DANA	46	TL	3,92 (47x12)	74173-1X	BA202310
Silverado	01/97	12/99	MWM Sprint	4x2	DANA	60	TL	4,10 (41x10)	BA401064-X	73797-X
Silverado	01/00	12/01	MWM Sprint	4x2	DANA	60HD	TL	4,10 (41x10)	BA401064-X	73797-X
Silverado	01/00	12/01	MWM Sprint	4x2	DANA	60HD	TL	4,56 (41x9)	BA401297-X	73797-X

MARCOPOLO

Volare A5	01/01	12/05	MWM 4.10 TCA	4x2	DANA	284	OT	3,90 (39x10)	BA402070-X	BA202936-2
Volare A5	01/01	12/05	MWM 4.10 TCA	4x2	DANA	284	OT	4,10 (41x10)	BA402071-X	BA202936-2
Volare A5	01/01	12/05	MWM 4.10 TCA	4x2	DANA	284	OT	4,63 (37x8)	BA402104-X	BA202936-1
Volare A5	01/01	12/05	MWM 4.10 TCA	4x2	DANA	284	OT	5,38 (43x8)	BA402073-X	BA202936-1
Volare A6	01/96	12/00	MWM 4.10 TCA	4x2	BRASEIXOS	411	OT	4,63 (37x8)	BA402104-X	BA402042-X
	01/96	12/00	MWM 4.10 TCA	4x2	BRASEIXOS	411	OT	4,63 (37x8)	BA402104-X	BA402042-X
Volare A6	01/96	12/00	MWM 4.10 TCA	4x2	BRASEIXOS	411	OT	5,38 (43x8)	BA402073-X	BA402042-X
	01/96	12/00	MWM 4.10 TCA	4x2	BRASEIXOS	411	OT	5,38 (43x8)	BA402073-X	BA402042-X
Volare A6	01/01	12/05	MWM 4.10 TCA	4x2	DANA	284	OT	3,90 (39x10)	BA402070-X	BA202936-2
Volare A6	01/01	12/05	MWM 4.10 TCA	4x2	DANA	284	OT	4,10 (41x10)	BA402071-X	BA202936-2
Volare A6	01/01	12/05	MWM 4.10 TCA	4x2	DANA	284	OT	4,63 (37x8)	BA402104-X	BA202936-1
Volare A6	01/01	12/05	MWM 4.10 TCA	4x2	DANA	284	OT	5,38 (43x8)	BA402073-X	BA202936-1
Volare A8	01/96	12/00	MWM 4.10 TCA	4x2	BRASEIXOS	411	OT	4,63 (37x8)	BA402104-X	BA402042-X
	01/96	12/00	MWM 4.10 TCA	4x2	BRASEIXOS	411	OT	4,63 (37x8)	BA402104-X	BA402042-X
Volare A8	01/96	12/00	MWM 4.10 TCA	4x2	BRASEIXOS	411	OT	5,38 (43x8)	BA402073-X	BA402042-X
	01/96	12/00	MWM 4.10 TCA	4x2	BRASEIXOS	411	OT	5,38 (43x8)	BA402073-X	BA402042-X
Volare A8	01/01	12/05	MWM 4.10 TCA	4x2	DANA	284	OT	3,90 (39x10)	BA402070-X	BA202936-2
Volare A8	01/01	12/05	MWM 4.10 TCA	4x2	DANA	284	OT	4,10 (41x10)	BA402071-X	BA202936-2
Volare A8	01/01	12/05	MWM 4.10 TCA	4x2	DANA	284	OT	4,63 (37x8)	BA402104-X	BA202936-1
Volare A8	01/01	12/05	MWM 4.10 TCA	4x2	DANA	284	OT	5,38 (43x8)	BA402073-X	BA202936-1

MERCEDES BENZ

Sprinter	01/96	12/99	Maxion HSD	4x2	DANA	46	OT	4,27 (47x11)	BA401212-X	74176-X
Sprinter	01/96	12/99	Maxion HSD	4x2	DANA	46	TL	4,27 (47x11)	BA401212-X	BA202310

TOYOTA

Hilux	01/99	12/05	2.8 SOHC	4x2	DANA	207	OT	4,10 (41x10)	BA401304-X	2002809
Hilux	01/99	12/05	2.8 SOHC	4x2	DANA	207	OT	4,56 (41x9)	BA401303-X	2002809
Hilux	01/99	12/05	2.8 SOHC	4x4	DANA	207	OT	4,10 (41x10)	BA401304-X	2002809
Hilux	01/99	12/05	2.8 SOHC	4x4	DANA	207	OT	4,56 (41x9)	BA401303-X	2002809

TROLLER

Troller	01/99	12/03	MWM 2.8	4x4	DANA	44-3	OT	4,09 (45x11)	BA401379-X	BA202814
---------	-------	-------	---------	-----	------	------	----	--------------	------------	----------



	BA401318-X	BA401215-X	BA401214-X	706032-X	BA401230-X	BA202787	BA203304	BA202967
BA202747	BA401193-X	BA401161-X	BA401196-X	706032-X	BA401229-X	BA202930	BA202662-3	73867-X
BA202747	BA401193-X	BA401161-X	BA401196-X	706032-X	BA401229-X	BA202930	BA202662-3	73867-X
	BA401235-X	BA401218-X	BA401217-X	BA401216-X	BA401229-X	BA202861	BA202862	72586-X
	BA401235-X	BA401218-X	BA401217-X	BA401216-X	BA401288-X		BA203181	72586-X
	BA401235-X	BA401218-X	BA401217-X	BA401216-X	BA401288-X		BA203181	72586-X

BA203169-2	BA401295-X	BA402006-X	BA401377-X	BA402092-X			101847-3	070462
BA203169-2	BA401295-X	BA402006-X	BA401377-X	BA402092-X			101847-3	070462
BA203169-1	BA401295-X	BA402006-X	BA401377-X	BA402092-X			101847-3	070462
BA203169-1	BA401295-X	BA402006-X	BA401377-X	BA402092-X			101847-3	070580
024436 ø 25,35mm	BA402031-X ø 25,35mm	BA402006-X	BA401377-X	BA402092-X			101847	070462
024208 ø 28,56mm		BA402006-X	BA401377-X	BA402092-X			101847	070462
024436 ø 25,35mm	BA402031-X ø 25,35mm	BA402006-X	BA401377-X	BA402092-X			101847	070462
024208 ø 28,56mm		BA402006-X	BA401377-X	BA402092-X			101847	070462
BA203169-2	BA401295-X	BA402006-X	BA401377-X	BA402092-X			101847-3	070462
BA203169-2	BA401295-X	BA402006-X	BA401377-X	BA402092-X			101847-3	070462
BA203169-1	BA401295-X	BA402006-X	BA401377-X	BA402092-X			101847-3	070462
BA203169-1	BA401295-X	BA402006-X	BA401377-X	BA402092-X			101847-3	070580
024436 ø 25,35mm	BA402031-X ø 25,35mm	BA402006-X	BA401377-X	BA402092-X			101847	070462
024208 ø 28,56mm		BA402006-X	BA401377-X	BA402092-X			101847	070462
024436 ø 25,35mm	BA402031-X ø 25,35mm	BA402006-X	BA401377-X	BA402092-X			101847	070462
024208 ø 28,56mm		BA402006-X	BA401377-X	BA402092-X			101847	070462
BA203169-2	BA401295-X	BA402006-X	BA401377-X	BA402092-X			101847-3	070580
BA203169-2	BA401295-X	BA402006-X	BA401377-X	BA402092-X			101847-3	070580
BA203169-1	BA401295-X	BA402006-X	BA401377-X	BA402092-X			101847-3	070580
BA203169-1	BA401295-X	BA402006-X	BA401377-X	BA402092-X			101847-3	070580

43945	BA401219-X	BA401161-X	BA401196-X	706032-XC	BA401200-X	BA202720	BA202722	BA202727
BA202747	BA401193-X	BA401161-X	BA401196-X	706032-XC	BA401200-X	BA202720	BA202722	BA202727

49681	BA401461-X		BA401196-X	BA401306-X				
49681	BA401461-X		BA401196-X	BA401306-X				
49681	BA401461-X		BA401196-X	BA401306-X				
49681	BA401461-X		BA401196-X	BA401306-X				

	BA401178-X	BA401215-X	BA401214-X	706032-X				BA201385-X
--	------------	------------	------------	----------	--	--	--	------------

Aplicação por Montadora e Veículo / Eixos Diferenciais

Aplicación por Marca y Modelo / Ejes Diferenciales

Application by Make and Model / Differential Axles



TROLLER

Troller	01/99	12/03	MWM 2.8	4x4	DANA	44-3	TL	4,09 (45x11)	BA401379-X	BA202818
---------	-------	-------	---------	-----	------	------	----	--------------	------------	----------

VOLKSWAGEN

6-80	01/82	12/86	MAXION 4236	4x2	DANA	70HD	OT	4,10 (41x10)	BA401237-X	BA202054
6-80	01/82	12/86	MAXION 4236	4x2	DANA	70HD	OT	4,56 (41x9)	BA401092-X	BA202061
6-90	01/83	12/88	MWM D229A	4x2	DANA	70HD	OT	4,10 (41x10)	BA401237-X	BA202054
6-90	01/83	12/88	MWM D229A	4x2	DANA	70HD	OT	4,56 (41x9)	BA401092-X	BA202061
7-100	01/87	12/02	MWM 4.10	4x2	BRASEIXOS	411	OT	5,38 (43x8)	BA402073-X	BA402042-X
	01/87	12/02	MWM 4.10	4x2	BRASEIXOS	411	OT	5,38 (43x8)	BA402073-X	BA402042-X
7-110	01/87	12/02	MWM Turbo	4x2	BRASEIXOS	411	OT	3,90 (39x10)	BA402070-X	BA402041-X
	01/87	12/02	MWM Turbo	4x2	BRASEIXOS	411	OT	3,90 (39x10)	BA402070-X	BA402041-X
7-110	01/87	12/02	MWM Turbo	4x2	BRASEIXOS	411	OT	4,10 (41x10)	BA402071-X	BA402041-X
	01/87	12/02	MWM Turbo	4x2	BRASEIXOS	411	OT	4,10 (41x10)	BA402071-X	BA402041-X
7-110	01/87	12/02	MWM Turbo	4x2	BRASEIXOS	411	OT	4,63 (37x8)	BA402104-X	BA402042-X
	01/87	12/02	MWM Turbo	4x2	BRASEIXOS	411	OT	4,63 (37x8)	BA402104-X	BA402042-X
7-110	01/87	12/02	MWM Turbo	4x2	DANA	70HD	OT	3,73 (41x11)	73433-1X	BA202054
7-110	01/90	12/93	MWM Turbo	4x2	BRASEIXOS	411	OT	3,90 (39x10)	BA402070-X	BA402041-X
	01/90	12/93	MWM Turbo	4x2	BRASEIXOS	411	OT	3,90 (39x10)	BA402070-X	BA402041-X
7-110	01/90	12/93	MWM Turbo	4x2	BRASEIXOS	411	OT	4,10 (41x10)	BA402071-X	BA402041-X
	01/90	12/93	MWM Turbo	4x2	BRASEIXOS	411	OT	4,10 (41x10)	BA402071-X	BA402041-X
7-110	01/90	12/93	MWM Turbo	4x2	BRASEIXOS	411	OT	4,63 (37x8)	BA402104-X	BA402042-X
	01/90	12/93	MWM Turbo	4x2	BRASEIXOS	411	OT	4,63 (37x8)	BA402104-X	BA402042-X
7-110	01/90	12/93	MWM Turbo	4x2	DANA	70HD	OT	3,73 (41x11)	73433-1X	BA202054
7-90	01/87	07/89	MWM D229A	4x2	BRASEIXOS	411	OT	3,90 (39x10)	BA402070-X	BA402041-X
	01/87	07/89	MWM D229A	4x2	BRASEIXOS	411	OT	3,90 (39x10)	BA402070-X	BA402041-X
7-90	01/87	07/89	MWM D229A	4x2	BRASEIXOS	411	OT	4,10 (41x10)	BA402071-X	BA402041-X
	01/87	07/89	MWM D229A	4x2	BRASEIXOS	411	OT	4,10 (41x10)	BA402071-X	BA402041-X
7-90	01/87	07/89	MWM D229A	4x2	BRASEIXOS	411	OT	4,63 (37x8)	BA402104-X	BA402042-X
	01/87	07/89	MWM D229A	4x2	BRASEIXOS	411	OT	4,63 (37x8)	BA402104-X	BA402042-X
7-90	08/89	12/93	MWM D229A	4x2	DANA	70HD	OT	4,10 (41x10)	BA401237-X	BA202054
7-90	08/89	12/93	MWM D229A	4x2	DANA	70HD	OT	4,56 (41x9)	BA401092-X	BA202061
8-120	01/00	12/05	MWM 4.10 TCA	4x2	DANA	284	OT	3,90 (39x10)	BA402070-X	BA202936-2
8-120	01/00	12/05	MWM 4.10 TCA	4x2	DANA	284	OT	4,10 (41x10)	BA402071-X	BA202936-2
8-120	01/00	12/05	MWM 4.10 TCA	4x2	DANA	284	OT	4,63 (37x8)	BA402104-X	BA202936-1



BA203326	BA401186-X	BA401215-X	BA401214-X	706032-X		BA201385-X
BA201870	BA401227-X	BA401078-X	BA401223-X	BA401197-X	BA201230	72586-X
BA201868	BA401227-X	BA401078-X	BA401223-X	BA401197-X	BA201230	72586-X
BA201870	BA401227-X	BA401078-X	BA401223-X	BA401197-X	BA201230	72586-X
BA201868	BA401227-X	BA401078-X	BA401223-X	BA401197-X	BA201230	72586-X
024436 ø 25,35mm	BA402031-X ø 25,35mm	BA402006-X	BA401377-X	BA402092-X	101847	070462
024208 ø 28,56mm		BA402006-X	BA401377-X	BA402092-X	101847	070462
024443 ø 25,35mm	BA402031-X ø 25,35mm	BA402006-X	BA401377-X	BA402092-X	101847	070453
024206 ø 28,56mm		BA402006-X	BA401377-X	BA402092-X	101847	070453
024443 ø 25,35mm	BA402031-X ø 25,35mm	BA402006-X	BA401377-X	BA402092-X	101847	070453
024206 ø 28,56mm		BA402006-X	BA401377-X	BA402092-X	101847	070453
024436 ø 25,35mm	BA402031-X ø 25,35mm	BA402006-X	BA401377-X	BA402092-X	101847	070453
024208 ø 28,56mm		BA402006-X	BA401377-X	BA402092-X	101847	070453
BA201870	BA401227-X	BA401225-X	BA401223-X	BA401197-X	BA201230	BA202194
024443 ø 25,35mm	BA402031-X ø 25,35mm	BA402006-X	BA401377-X	BA402092-X	101847	070453
024206 ø 28,56mm		BA402006-X	BA401377-X	BA402092-X	101847	070453
024443 ø 25,35mm	BA402031-X ø 25,35mm	BA402006-X	BA401377-X	BA402092-X	101847	070453
024206 ø 28,56mm		BA402006-X	BA401377-X	BA402092-X	101847	070453
024436 ø 25,35mm	BA402031-X ø 25,35mm	BA402006-X	BA401377-X	BA402092-X	101847	070453
024208 ø 28,56mm		BA402006-X	BA401377-X	BA402092-X	101847	070453
BA201870	BA401227-X	BA401225-X	BA401223-X	BA401197-X	BA201230	BA202194
024443 ø 25,35mm	BA402031-X ø 25,35mm	BA402006-X	BA401377-X	BA402092-X	101847	070453
024206 ø 28,56mm		BA402006-X	BA401377-X	BA402092-X	101847	070453
024443 ø 25,35mm	BA402031-X ø 25,35mm	BA402006-X	BA401377-X	BA402092-X	101847	070453
024206 ø 28,56mm		BA402006-X	BA401377-X	BA402092-X	101847	070453
024436 ø 25,35mm	BA402031-X ø 25,35mm	BA402006-X	BA401377-X	BA402092-X	101847	070453
024208 ø 28,56mm		BA402006-X	BA401377-X	BA402092-X	101847	070453
BA201870	BA401227-X	BA401225-X	BA401223-X	BA401197-X	BA201230	72586-X
BA201868	BA401227-X	BA401225-X	BA401223-X	BA401197-X	BA201230	72586-X
BA203169-2	BA401295-X	BA402006-X	BA401377-X	BA402092-X	101847-2	070580
BA203169-2	BA401295-X	BA402006-X	BA401377-X	BA402092-X	101847-2	070580
BA203169-1	BA401295-X	BA402006-X	BA401377-X	BA402092-X	101847-2	070580

Aplicação por Montadora e Veículo / Eixos Diferenciais

Aplicación por Marca y Modelo / Ejes Diferenciales

Application by Make and Model / Differential Axles



VOLKSWAGEN

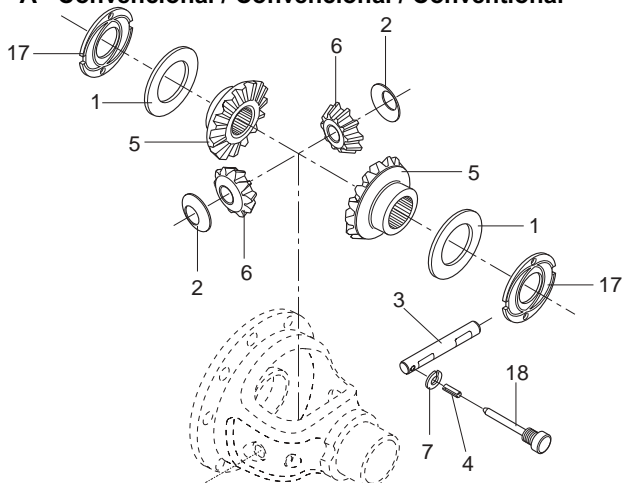
8-120	01/00	12/05	MWM 4.10 TCA	4x2	DANA	284	OT	5,38 (43x8)	BA402073-X	BA202936-1
8-140	01/94	12/98	MWM 4.10 T	4x2	DANA	80	OT	4,10 (41x10)		73165-X
	01/94	12/98	MWM 4.10 T	4x2	DANA	80	OT	4,10 (41x10)		73165-X
8-140	01/94	12/98	MWM 4.10 T	4x2	DANA	80	OT	4,63 (37x8)	73167-1X	73165-X
	01/94	12/98	MWM 4.10 T	4x2	DANA	80	OT	4,63 (37x8)	73167-1X	73165-X
8-140	01/94	12/98	MWM 4.10 T	4x2	DANA	80	OT	5,13 (41x8)	73168-1X	73165-X
	01/94	12/98	MWM 4.10 T	4x2	DANA	80	OT	5,13 (41x8)	73168-1X	73165-X
8-140	01/94	12/98	MWM 4.10 T	4x2	DANA	80	OT	5,38 (43x8)	BA402073-X	73165-X
	01/94	12/98	MWM 4.10 T	4x2	DANA	80	OT	5,38 (43x8)	BA402073-X	73165-X
8-140	01/99	12/01	MWM 4.10 T	4x2	BRASEIXOS	411	OT	4,63 (37x8)	73167-1X	BA402042-X
	01/99	12/01	MWM 4.10 T	4x2	BRASEIXOS	411	OT	4,63 (37x8)	BA402104-X	BA402042-X
8-140	01/99	12/01	MWM 4.10 T	4x2	BRASEIXOS	411	OT	5,38 (43x8)	BA402073-X	BA402042-X
	01/99	12/01	MWM 4.10 T	4x2	BRASEIXOS	411	OT	5,38 (43x8)	BA402073-X	BA402042-X
8-150	01/00	12/05	MWM 4.10 TCA	4x2	DANA	284	OT	3,90 (39x10)	BA402070-X	BA202936-2
8-150	01/00	12/05	MWM 4.10 TCA	4x2	DANA	284	OT	4,10 (41x10)	BA402071-X	BA202936-2
8-150	01/00	12/05	MWM 4.10 TCA	4x2	DANA	284	OT	4,63 (37x8)	BA402104-X	BA202936-1
8-150	01/00	12/05	MWM 4.10 TCA	4x2	DANA	284	OT	5,38 (43x8)	BA402073-X	BA202936-1
8-150	01/00	12/05	MWM 4.10 TCA	4x2	DANA	284	OT	5,86 (41x7)	BA402117-X	BA202936-1
8-150	01/00	12/05	MWM 4.10 TCA	4x2	DANA	480	OT	4,30 (43x10)	BA402115-X	BA202936-1
9-150	01/00	12/05	MWM 4.10 TCA	4x2	DANA	284	OT	3,90 (39x10)	BA402070-X	BA202936-2
9-150	01/00	12/05	MWM 4.10 TCA	4x2	DANA	284	OT	4,10 (41x10)	BA402071-X	BA202936-2
9-150	01/00	12/05	MWM 4.10 TCA	4x2	DANA	284	OT	4,63 (37x8)	BA402104-X	BA202936-1
9-150	01/00	12/05	MWM 4.10 TCA	4x2	DANA	284	OT	5,38 (43x8)	BA402073-X	BA202936-1
9-150	01/00	12/05	MWM 4.10 TCA	4x2	DANA	480	OT	4,30 (43x10)	BA402115-X	BA202936-1



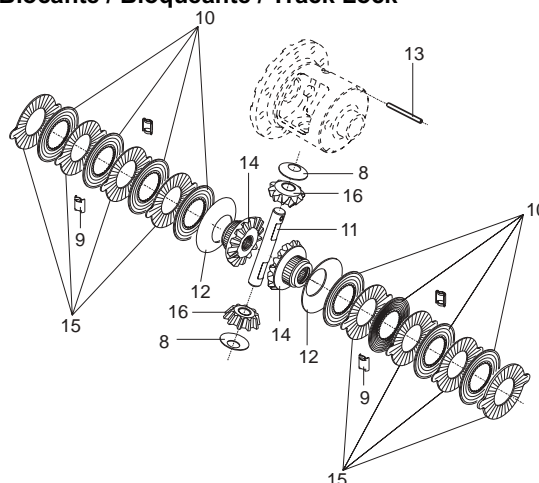
BA203169-1	BA401295-X	BA402006-X	BA401377-X	BA402092-X	101847-2	070580
42409	BA401202-X	BA401201-X	BA401163-X	BA401197-X	BA202449	BA202498
42409	BA401202-X	BA401201-X	BA401163-X	BA401197-X	BA202449	BA202498
42409	BA401202-X	BA401201-X	BA401163-X	BA401197-X	BA202449	BA202498
42409	BA401202-X	BA401201-X	BA401163-X	BA401197-X	BA202449	BA202498
42409	BA401202-X	BA401201-X	BA401163-X	BA401197-X	BA202449	BA202498
42409	BA401202-X	BA401201-X	BA401163-X	BA401197-X	BA202449	BA202498
024436 ø 25,35mm	BA402031-X ø 25,35mm	BA402006-X	BA401377-X	BA402092-X	101847	070453
024208 ø 28,56mm		BA402006-X	BA401377-X	BA402092-X	101847	070453
024436 ø 25,35mm	BA402031-X ø 25,35mm	BA402006-X	BA401377-X	BA402092-X	101847	070453
024208 ø 28,56mm		BA402006-X	BA401377-X	BA402092-X	101847	070453
BA203169-2	BA401295-X	BA402006-X	BA401377-X	BA402092-X	101847-2	070580
BA203169-2	BA401295-X	BA402006-X	BA401377-X	BA402092-X	101847-2	070580
BA203169-1	BA401295-X	BA402006-X	BA401377-X	BA402092-X	101847-2	070580
BA203169-1	BA401295-X	BA402006-X	BA401377-X	BA402092-X	101847-2	070580
BA203169-1	BA401295-X	BA402006-X	BA401377-X	BA402092-X	101847-2	070580
BA203169-1	BA401295-X	BA402006-X	BA401377-X	BA402092-X	101847-2	070580
BA203169-2	BA401295-X	BA402006-X	BA401377-X	BA402092-X	101847-2	070580
BA203169-2	BA401295-X	BA402006-X	BA401377-X	BA402092-X	101847-2	070580
BA203169-1	BA401295-X	BA402006-X	BA401377-X	BA402092-X	101847-2	070580
BA203169-1	BA401295-X	BA402006-X	BA401377-X	BA402092-X	101847-2	070580
BA203169-1	BA401295-X	BA402006-X	BA401377-X	BA402092-X	101847-2	070580

Kit de Reparo da Caixa do Diferencial / Kit de reparacion para Caja de Diferencial / Diff Case Repair Kit

A - Convencional / Convencional / Conventional



B - Bloqueante / Bloqueante / Track Lock



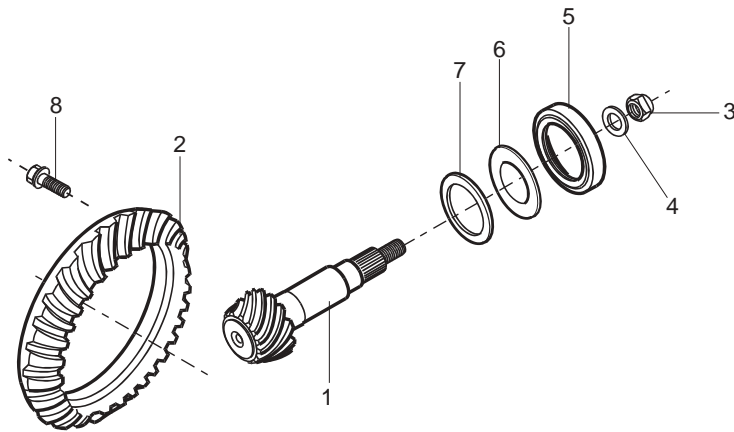
Composição / Composición / Composition

- 1 Arruela Planetária / Arandela del Planetario / Side Gear Washer
- 2 Arruela Satélite / Arandela del Satélite / Pinion Mate Washer
- 3 Eixo Satélite / Pasador de Satélite / Pinion Mate Shaft
- 4 Pino Trava Eixo Satélite / Guia Pasador de Satélites / Pin Mate Lock Pin
- 5 Planetária / Planetário / Side Gear
- 6 Satélite / Satélite / Pinion Mate
- 7 Arruela de Presão do Pino trava / Arandela del Presión Piño Frenar / Washer of is of the bolt stops
- 8 Arruela Satélite / Arandela del Satélite / Pinion Mate Washer

- 9 Clip Trava dos Pratos / Clip Traba de platos / Clip Bolt of Plates
- 10 Disco Fricção / Disco de Fricción / Disc Friction
- 11 Eixo Satélite / Pasador de Satélite / Pinion Mate Shaft
- 12 Mola Belleville / Resorte Belleville / Spring – Belleville
- 13 Pino Trava Eixo Satélite / Guia Pasador de Satélites / Pin Mate Lock Pin
- 14 Planetária / Planetário / Side Gear
- 15 Prato de Fricção / Plato de Fricción / Friction Plate
- 16 Satélite / Satélite / Pinion Mate

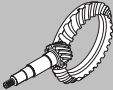
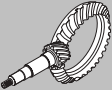
	QTD	Composição Composición Composition		QTD	Composição Composición Composition		QTD	Composição Composición Composition
706043-X	1	3, 4	BA401178-X	1	3, 4		2	8, 12, 14, 16
	2	1, 2, 5, 6		2	1, 2, 5, 6		4	9
707252-1X	1	3, 4	BA401179-X	1	3, 4		8	10
	2	1, 2, 5, 6		2	1, 2, 5, 6		10	15
707254-X	2	1, 11, 14	BA401186-X	1	11, 13	BA401295-X	1	3, 4
	4	16		2	8, 12, 14, 16		2	1, 2, 5, 6
	10	10		4	9	BA401318-X	1	3, 4
BA401002-X	1	3, 4		8	10, 15		2	1, 2, 5, 6
	2	1, 2, 5, 6	BA401193-X	1	11, 13	BA401327-X	1	3, 4
BA401010-X	1	3, 4		2	8, 12, 14, 16		2	1, 2, 5, 6
	2	1, 2, 5, 6		4	9	BA402028-X	1	3, 4, 7
BA401034-X	1	11, 13		8	10, 15		2	1, 2, 5, 6
	2	8, 14, 16	BA401202-X	1	3, 4	BA402029-X	1	3, 4
	6	10		2	1, 2, 5, 6		2	1, 2, 5, 6
	8	15	BA401219-X	1	3, 4	BA402030-X	1	3, 4
BA401103-X	1	11, 13		2	1, 2, 5, 6		2	1, 2, 5, 6
	2	8, 14, 16	BA401227-X	1	3, 4	BA402031-X	1	3, 4
	6	10		2	1, 2, 5, 6		2	1, 2, 5, 6
	8	15	BA401235-X	1	11, 13			

Coroa e Pinhão / Corona y Piñón / Gear Set

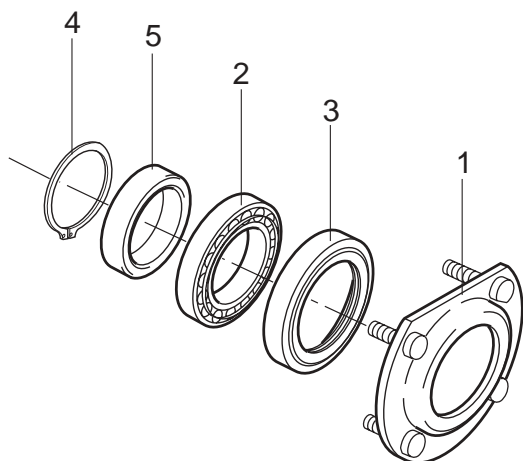


Composição / Composición / Composition

- 1 Pinhão / Piñón / Pinion
- 2 Coroa / Corona / Ring
- 3 Porca / Tuerca / Nut
- 4 Arruela / Arandela / Washer
- 5 Retedor de Óleo do Pinhão / Retedor de Aceite Del Piñón / Gear Oil Seal
- 6 Arruela Defletora do Pinhão / Arandela deflectora del Piñón / Deflector washer of the Gear
- 7 Anel Colapsível / Anillo Colapsível / Ring Collapse
- 8 Parafuso da Coroa / Tornillo de Corona / Gear Screw

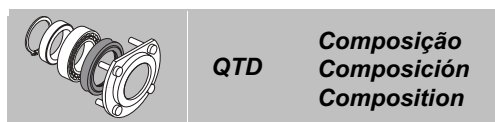
	QTD	Composição Composición Composition		QTD	Composição Composición Composition
22856-1X	1	4, 6, 7	BA401303-X	1	2, 3, 4,
23592-1X	1	4, 6, 7		10	5
71762-X	1	4, 6	BA401304-X	1	2, 3, 4, 6, 7, 8
73167-1X	1	3, 4, 6, 7		10	5
73168-1X	1	3, 4, 6, 7	BA401320-X	1	3, 4, 6, 7
73433-1X	1	1, 3, 4, 6, 7	BA401322-X	1	3, 4, 6, 7
73866-1X	1	4, 6, 7	BA401323-X	1	1, 3, 4, 6, 7
74173-1X	1	4, 6	BA401324-X	1	1, 3, 4, 6, 7
74202-1X	1	4, 6	BA401378-X	1	4, 6, 7
BA401062-X	1	4, 6	BA401379-X	1	4, 6, 7
BA401064-X	1	3, 4, 6, 7	BA401380-X	1	4, 6, 7
BA401092-X	1	1, 3, 4, 6, 7	BA402050-X	1	1, 4, 6, 7
BA401153-1X	1	3, 4, 6, 7	BA402058-X	1	1, 4, 6, 7
BA401154-1X	1	3, 4, 6, 7	BA402059-X	1	1, 4, 6, 7
BA401155-1X	1	3, 4, 6, 7	BA402060-X	1	1, 4, 6, 7
BA401156-1X	1	3, 4, 6, 7	BA402061-X	1	1, 4, 6, 7
BA401157-1X	1	3, 4, 6, 7	BA402062-X	1	1, 4, 6, 7
BA401212-X	1	3, 4, 6, 7	BA402066-X	1	3, 4, 6, 7
BA401231-X	1	4, 6, 7	BA402069-X	1	3, 4, 6, 7
BA401232-X	1	2, 3, 4, 6, 7	BA402070-X	1	3, 4, 6, 7
BA401233-X	1	2, 3, 4, 6, 7	BA402071-X	1	3, 4, 6, 7
BA401234-X	1	2, 3, 4, 6, 7	BA402073-X	1	3, 4, 6, 7
BA401236-X	1	3, 4, 6, 7			
BA401237-X	1	3, 4, 6, 7			
BA401297-X	1	3, 4, 6, 7			

Kit de Reparo do Semi-Eixo / Kit de reparacion para semi-eje / Axle shaft repair kit



Composição / Composición / Composition

- 1 Placa de Encosto do Rolamento / Placa de Costado del Rodamiento / Plate of lean of the Bearing
- 2 Rolamento do Semi-Eixo / Rodamiento del Semi-Eje / Axle Shaft Bearing
- 3 Retentor do Semi-Eixo / Retenedor del Semi-Eje / Wheel Bearing Oil Seal
- 4 Anel Trava do Semi-Eixo / Anillo Traba del Semi-Eje / Ring Bolt of Driveshaft
- 5 Anel de Retenção do Semi-Eixo / Anillo de Retención del Semi-Eje / Ring Retention of Driveshaft



	QTD	Composição Composición Composition
BA401148-X	1	2, 3, 4, 5
BA401200-X	1	2, 3, 4, 5
BA401228-X	1	2, 3, 4, 5
BA401229-X	1	1, 2, 3, 4, 5
BA401230-X	1	2, 3, 4, 5
BA401288-X	1	2, 5
	2	1
BA401348	1	2, 3, 4, 5
BA401349	1	2, 3, 4, 5

AGRALE	SPICER	FORD	SPICER	GENERAL MOTORS	SPICER
4001035075005	706047-X	BF6T4200AC	BA402041-X	101461	101461
4001035082001	BA401223-X	BF6T4200AD	BA202645	101851	101851
6003009081009	101326	BF6T4200AE	BA202652	2476311	2-4-7631-1
6003009083005	101461	BF6T4205AC	BA202748-1	43555	43555
6005009065007	26188-X	BF6T4205AD	BA202747-1	439931	43993-1
6005009083000	73867-X	BF6T4235AB	101788	439932	43993-2
6006009019002	72586-X	BF6T4235AC	101847	52258244	73867-X
6006009054009	BA402041-X	BF6T4851AC	73867-2X	52258247	43555
6007009036004	101847	BF6T4851AD	BA202497	706032X	706032-X
6007009039008	BA201868	BF6X4200AA	73165-X	73797X	73797-X
6007009040006	BA201870	BF6X4209AA	73167-1X	738672X	73867-2X
6007009054007	101847-2	BF6X4235AA	BA202449	73867X	73867-X
6007009057000	BA401092-X	BF6X4851AA	BA202498	74200X	74200-X
6007009061002	BA202449	BF7T4209AA	BA401155-1X	93214341	43946
6007009148007	BA202936-2	BF8T4215A	707252-1X	93217387	43945
6007009149005	BA203169-2	BF8T4215C	707254-X	93217388	74173-1X
6007009152009	BA202936-1	BF8T4220A	706047-X	93225247	BA202662-1
6007009158006	BA203169-1	BF8T4220C	707070-X	93226923	706032-X
6007009327007	73165-X	BF8T4234A	BA401270-X	93226961	73867-2X
6007009332007	42409	BF8T4234B	BA401271-X	93245498	BA401153-1X
6007009340000	BA202498	BF8T4235A	BA401277-X	93246977	BA401157-1X
		BF8T4851A	76334-X	93246978	BA401154-1X
		BF8T4851B	75434-X	93247061	BA202662-2
		BG1T/1225/B/	BA401348	93247075	43945-1
		BG1T/4221/A/	706032-X	93248949	101851
		BG1T/4234/A/	BA203263-2	93251511	BA202747
		BG1T/4235/A/	BA203263-1	93251512	BA202748
		BG1T1225A	BA401349	93256481	BA202662-3
		BG1T1225B	BA401348	93256488	706047-X
		BG1T4221A	706032-X	93257435	BA202789-X
		BG1T4234A	BA203263-2	93257661	BA401187-X
		BG1T4234B	BA203267-2	93259653	72586-X
		BG1T4235A	BA203263-1	93269262	BA202787
		BG1T4235B	BA203267-1	93269263	BA202770
		BG1T4851A	BA203334	93274774	BA202814
		BG1T4880AB	BA401186-X	93274775	BA202818
		BG1X4200AA	BA202936-1	93274777	BA202835
		BG1X4220AA	BA402092-X	93275141	BA202934
		BG1X4235AA	101847-2	93277287	BA401233-X
		BG2T4209A	BA401378-X	93277557	BA401232-X
		F3TQ4215RE	BA402028-X	93277571	BA401234-X
		TH7525021	BA202054	93277588	BA401231-X
		TH7525121	BA201870	93277628	BA401217-X
		TH7525121A	BA201868	93277629	BA401230-X
		TH7525283A	72586-X	93277633	BA401178-X
		TNM525021	BA202310	93277673	BA401179-X
				93278423	BA401216-X
FORD	SPICER				
101461	101461				
101753	101753				
2RD525121	42409				
2SF409143A	71762-X				
2SF498087	706032-X				
2SF501203	43993-2				
2SF525021	73865-X				
2SF525021A	73869-X				
2SF525121	43555				
2SF525121A	BA202748				
2SF525283	73867-X				
707070X	707070-X				
73797X	73797-X				
84TU4209E	BA401062-X				
85TU1243A	BA402079-X				
90TU4235CA	43993-1				
90TU4851BA	74200-X				
94TZ4209RE	BA402059-X				
BA202749	BA202749				
BA402070X	BA402070-X				
BC8C4851A	BA201385-X				
BEOY4204B	26188-X				
BEOY4205B	30357				
BF5T1K106A	BA401146-X				

Referencia Cruzada / Eixos Diferenciais

Referencia Cruzada / Ejes Diferenciales

Cross Reference / Differential Axles



GENERAL MOTORS	SPICER	VOLKSWAGEN	SPICER
93278426	73797-X	2RD525283A	BA202498
93278437	BA401064-X	2RD525283B	BA202497
93278447	BA202861	2RF525145	73168-1X
93278456	74176-X	2RO525143	BA402073-X
93278465	BA401156-1X	2RO598081	BA202936-1
93278655	BA401186-X	2SF409143A	71762-X
93279009	BA401235-X	2SF525021A	73869-X
93279015	BA402071-X	2SF525121	43555
93279018	BA402092-X	2SF525283	73867-X
93279023	BA402006-X	2TA501203	101847
93279494	BA202930	BEOY4204B	26188-X
93299240	BA202936-1	T06501203	BA201230
93299242	BA203169-1	T06525283A	72586-X
93299243	BA401295-X	TH7525021	BA202054
93327657	BA401211-X	TH7525021A	BA202061
93327658	BA401215-X	TH7525121	BA201870
93330718	BA401320-X	TH7525121A	BA201868
93330719	BA203301	TL7525283	BA202194
93330720	BA401318-X		
93335464	BA203181		
93335466	BA401288-X		
93361941	BA401297-X		
93366745	BA401232-X		
93386719	BA203254		
94654383	101874		
BA402070X	BA402070-X		
MERCEDES BENZ	SPICER		
954603315002	BA202310		
A0003500445	BA202727		
A0003501423	BA202310		
A0003531301	BA202747		
BA202747	BA202747		
TOYOTA	SPICER		
4120198310	BA401304-X		
4120198320	BA401303-X		
4131198310	49681		
9002366300	BA401306-X		
VOLKSWAGEN	SPICER		
2R0501205	101847-2		
2R0501319A	BA402092-X		
2R0521121	BA203169-1		
2R0525143	BA402073-X		
2R0598081	BA202936-1		
2RD501203A	BA202449		
2RD525021	73165-X		
2RD525121	42409		

Não importa o caminho, sinta-se seguro. Nakata, a mais completa linha de componentes de suspensão do mercado.

Nakata é a marca líder de mercado em componentes de suspensão para veículos pesados.

Com Nakata, você tem barras de direção, barras de reação e terminais de direção que garantem a satisfação e a segurança dos seus clientes. Por isso, na hora de escolher os componentes para linha pesada, você já sabe: escolha Nakata. Sinta-se seguro.



Da família Affinia de marcas

CRUZETA É SPICER. RESISTÊNCIA E DURABILIDADE, LÍDER EM COMPONENTES DE CARDAN.

Com a maior resistência e vida útil do mercado, além de um exclusivo sistema de vedação que impede a entrada de sujeira e água, garantindo a lubrificação, as cruzetas Spicer são referência de mercado e garantia de cliente sempre satisfeito. Exija Spicer, a tecnologia original com a melhor relação entre desempenho, durabilidade e a satisfação dos seus clientes.

